

SALE NUMBER 1767
ON PUBLIC EXHIBITION FROM SUNDAY, OCTOBER TWENTY-EIGHTH

THE
LUIS RUIZ
COLLECTION OF
SPANISH ANTIQUES

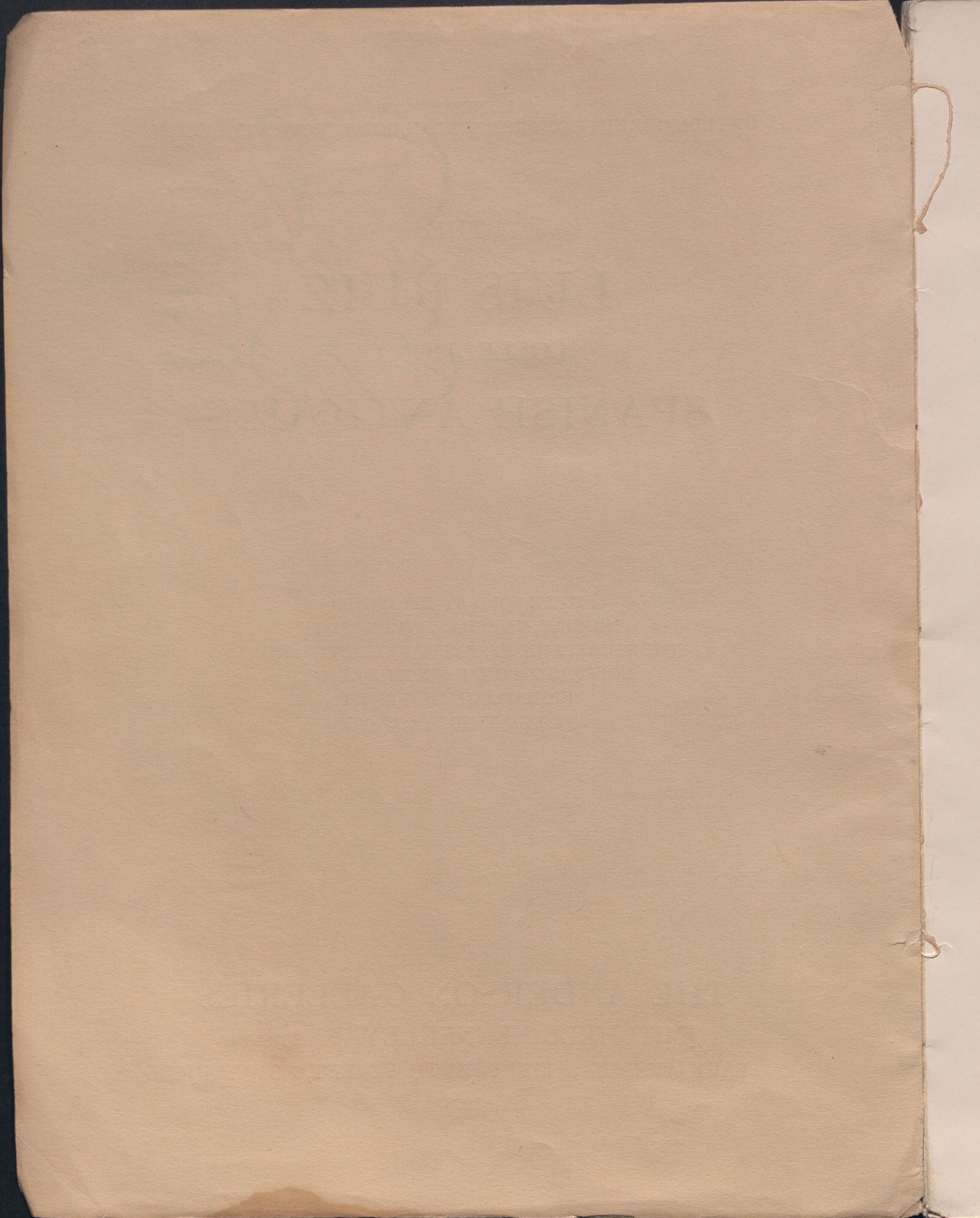
TO BE SOLD BY HIS ORDER
MONDAY, TUESDAY, WEDNESDAY
THURSDAY, FRIDAY, SATURDAY AFTERNOONS
NOVEMBER FIFTH, SIXTH, SEVENTH
EIGHTH, NINTH, TENTH
AT TWO-THIRTY O'CLOCK

THE ANDERSON GALLERIES
[MITCHELL KENNERLEY, PRESIDENT]
PARK AVENUE & FIFTY-NINTH STREET, NEW YORK

1923

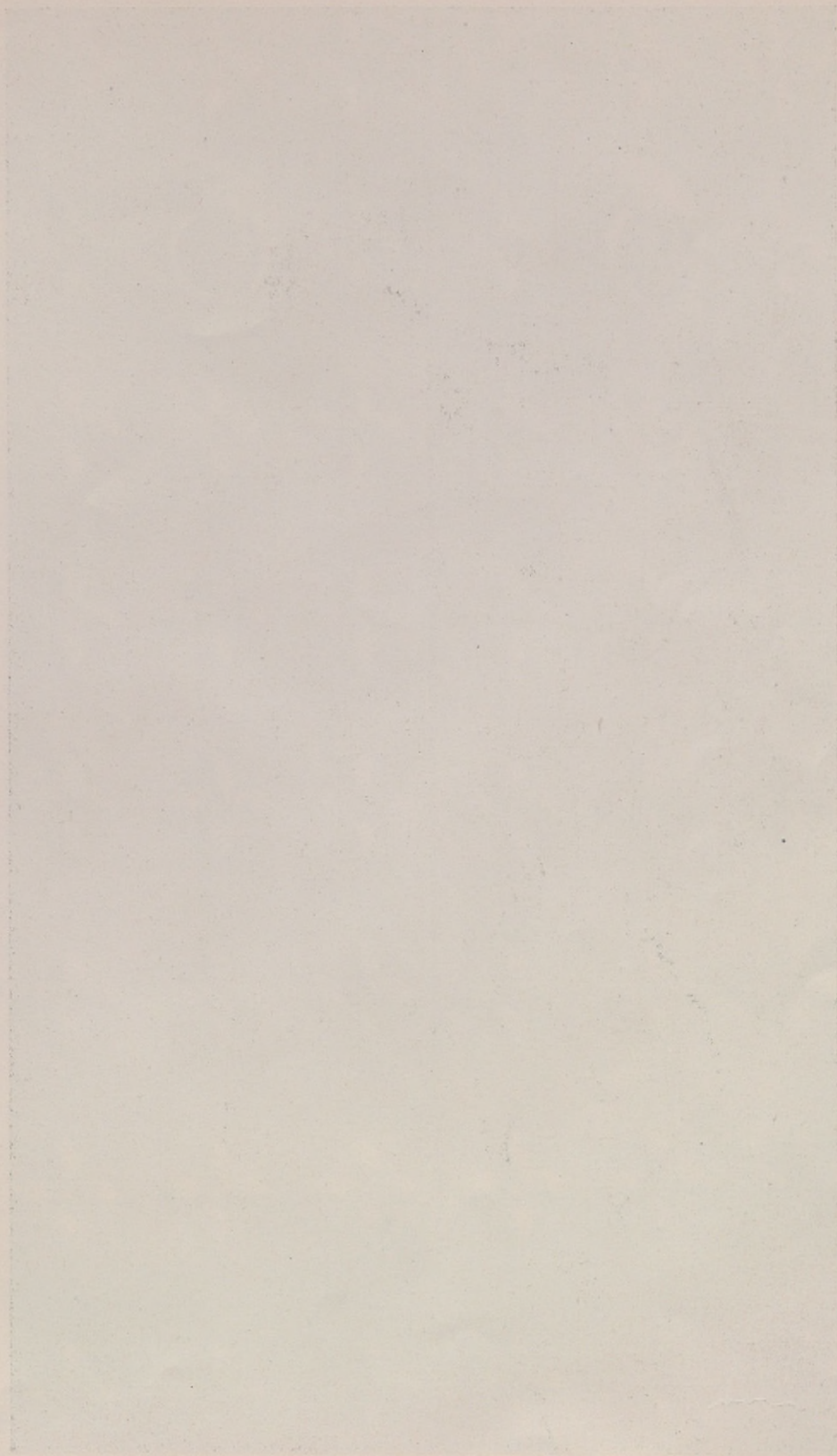
ANDERSON GALLERIES 1707 THE LUIS RUIZ COLLECTION NOVEMBER 5, 6, 7, 8, 9, 10, 11

ANDERSON CATALOGUE THE LUIS RUIZ COLLECTION NOVEMBER 5, 6, 7, 8, 9, 10, 1928



Corr/339

R. 73432



THE UNIVERSITY OF CHICAGO
LIBRARY



LARGE 16TH CENTURY DOUBLE DOOR
[NUMBER 1031]

SALE NUMBER 1767
ON PUBLIC EXHIBITION FROM SUNDAY, OCTOBER TWENTY-EIGHTH

THE
LUIS RUIZ
COLLECTION OF
SPANISH ANTIQUES

TO BE SOLD BY HIS ORDER

ORDER OF SALE

MONDAY AFTERNOON	NOVEMBER FIFTH	1- 200
TUESDAY AFTERNOON	NOVEMBER SIXTH	201- 400
WEDNESDAY AFTERNOON	NOVEMBER SEVENTH	401- 601
THURSDAY AFTERNOON	NOVEMBER EIGHTH	602- 808
FRIDAY AFTERNOON	NOVEMBER NINTH	809-1033
SATURDAY AFTERNOON	NOVEMBER TENTH	1034-1281

AT TWO-THIRTY O'CLOCK

THE ANDERSON GALLERIES
[MITCHELL KENNERLEY, PRESIDENT]
PARK AVENUE & FIFTY-NINTH STREET, NEW YORK

1923

CONDITIONS OF SALE

All bids to be PER LOT as numbered in the Catalogue.

The highest bidder to be the buyer. In all cases of disputed bids the lot shall be resold but the Auctioneer will use his judgment as to the good faith of all claims and his decision shall be final.

Buyers to give their names and addresses and to make such cash payments on account as may be required, in default of which the lots purchased to be immediately resold.

Purchases to be taken away at the buyer's expense and risk within twenty-four hours from the conclusion of the sale, and the remainder of the purchase money to be paid on or before delivery, in default of which The Anderson Galleries, Incorporated, will not be responsible if the lot or lots be lost, stolen, damaged, or destroyed, but they will be left at the sole risk of the purchaser, and subject to storage charges.

All lots will be exposed for public exhibition before the date of sale, for examination by intending purchasers, and The Anderson Galleries, Incorporated, will not be responsible for the correctness of the description, authenticity, genuineness, or for any defect or fault in or concerning any lot, and makes no warranty whatever, but will sell each lot exactly as it is, WITHOUT RECOURSE.

TERMS CASH. Upon failure to comply with the above conditions any sum deposited as part payment shall be forfeited, and all such lots as remain uncleared after twenty-four hours from the conclusion of the sale will be resold by either private or public sale at such time as The Anderson Galleries, Incorporated, shall determine, without further notice, and if any deficiency arises from such resale it shall be made good by the defaulter at this sale together with all the expenses incurred thereby. This condition shall be without prejudice to the right of The Anderson Galleries, Incorporated, to enforce the contract with the buyer, without such resale.

BIDS. We make no charge for executing orders for our customers and use all bids competitively, buying at the lowest price permitted by other bids.

The Anderson Galleries, Incorporated, will afford every facility for the employment of carriers and packers by the purchasers, but will not be responsible for any damage arising from the acts of such carriers and packers.

THE ANDERSON GALLERIES
PARK AVENUE AND FIFTY-NINTH STREET

NEW YORK

TELEPHONE PLAZA 9356

CATALOGUES ON REQUEST

SALES CONDUCTED BY MR. F. A. CHAPMAN AND MR. A. N. BADE

INTRODUCTION

MR. LUIS RUIZ of Madrid is now well-known to the lovers of Spanish art in New York. He is one of the best-known dealers in Spanish antiques in Madrid. He held his first sale with The Anderson Galleries in April, 1922. He is now here again with a considerably more important collection which he has gathered in the meantime. Mr. Ruiz is not a man of many words and prefers to let the objects speak for themselves; the following catalogue compiled by Mr. Ruiz himself is therefore of the utmost brevity. He can afford indeed to let the objects speak for themselves.

Spanish art is of manifold interest to American collectors. All those who have travelled or lived in California, the South-Western States, Louisiana and Florida are fully acquainted with the great contribution made by Spain, not only to South-American, but also to North-American civilization. Although the California Missions of the Cammino Real are not quite as mediæval as the native sons of California would like them to be, it is nevertheless true that the Spanish University of Lima in Peru is the oldest University and centre of higher culture in the Western hemisphere.

R. M. RIEFSTAHL, PH. D.

FIRST SESSION

NUMBERS 1-200

- | | | | | |
|----|---|---------------------|---|----|
| 1 | PAIR OF EMPIRE STYLE METAL CHANDELIERS
A simple classic shape. (2) | SPAIN, 18TH CENTURY | } | 8 |
| 2 | EMBROIDERED SILK PICTURE, VIRGIN OF THE ROSARY | SPAIN, 18TH CENTURY | | |
| 3 | SET OF FOUR RED SILK TASSELS
(4) | SPAIN, 18TH CENTURY | | 7 |
| 4 | SET OF FOUR RED SILK TASSELS
(4) | SPAIN, 18TH CENTURY | | 16 |
| 5 | LOUIS XVI SILVER FRAME
Classic design. | SPAIN, 18TH CENTURY | | |
| 6 | PAIR OF TALAVERA PHARMACY JARS
(2) | SPAIN, 17TH CENTURY | } | 11 |
| 7 | PAIR OF TALAVERA PHARMACY JARS
(2) | SPAIN, 17TH CENTURY | | |
| 8 | TALAVERA JUG | SPAIN, 18TH CENTURY | | 7 |
| 9 | DRAWNWORK COVER | SPAIN, 17TH CENTURY | | 7 |
| 10 | EMBROIDERED COVER | SPAIN, 17TH CENTURY | | 10 |
| 11 | EMBROIDERED COVER | SPAIN, 17TH CENTURY | | 9 |
| 12 | EMBROIDERED COVER | SPAIN, 17TH CENTURY | | 8 |
| 13 | COVER WITH POLYCHROME EMBROIDERY | SPAIN, 17TH CENTURY | | 6 |
| 14 | COVER WITH POLYCHROME EMBROIDERY | SPAIN, 17TH CENTURY | | 19 |
| 15 | SET OF EIGHT RED SILK TASSELS
(8) | SPAIN, 17TH CENTURY | | |

Roto

108

10

16 SET OF EIGHT RED SILK TASSELS SPAIN, 17TH CENTURY
(8)

8

17 SET OF EIGHT BLUE SILK TASSELS SPAIN, 17TH CENTURY
(8)

4

18 SET OF EIGHT CREAM-COLORED SILK TASSELS SPAIN, 17TH CENTURY
(8)

11

19 OPENWORK EMBROIDERY COVER SPAIN, 17TH CENTURY

14

20 FILET LACE COVER SPAIN, 18TH CENTURY

6

21 PAIR OF GLASS FLASKS SPAIN, 18TH CENTURY
(2)

19

22 PAIR OF RED GLASS JARS SPAIN, 18TH CENTURY
(2)

6

23 PAIR OF RED GLASS JARS SPAIN, 18TH CENTURY
(2)

4

24 RECTANGULAR BRONZE PLAQUE WITH REPRESENTATION OF ST. PETER SPAIN, 17TH CENTURY
Small size.

4

25 BRONZE PLAQUE SPAIN, 17TH CENTURY
With representation of the suffering Christ in the Garden of Gethsemane.

5

26 BRONZE PLAQUE SPAIN, 17TH CENTURY
With representation of Mary Magdalene.

21

28 BRONZE MORTAR DECORATED WITH CLASSIC BUSTS SPAIN, 16TH CENTURY

4

29 BRONZE MORTAR WITH HANDLES SPAIN, 18TH CENTURY

13

30 BRONZE MORTAR SPAIN, 16TH CENTURY

14

31 BRONZE MORTAR SPAIN, 16TH CENTURY

10

32 SMALL METAL BELL WITH FIGURAL DECORATION SPAIN, 16TH CENTURY

261

33	BRONZE BELL WITH WOODEN HANDLE	SPAIN, 16TH CENTURY	261 9
34	STRIP OF FILET LACE WITH FIGURAL DESIGN	SPAIN, 18TH CENTURY	17 50
35	STRIP OF FILET LACE WITH FIGURAL DESIGN	SPAIN, 18TH CENTURY	17 50
36	STRIP OF DRAWNWORK EMBROIDERY	SPAIN, 17TH CENTURY	8
37	STRIP OF FILET LACE	SPAIN, 17TH CENTURY	17
38	SMALL COVER EMBROIDERED IN BLACK	SPAIN, 18TH CENTURY	
39	STRIP OF DRAWNWORK EMBROIDERY	SPAIN, 17TH CENTURY	13
40	SMALL COVER EMBROIDERED IN BLACK	SPAIN, 17TH CENTURY	8
41	SPREAD EMBROIDERED IN BLACK	SPAIN, 16TH CENTURY	10
42	TABLE COVER WITH POLYCHROME EMBROIDERY	SPAIN, 17TH CENTURY	13
43	TABLE COVER WITH POLYCHROME EMBROIDERY	SPAIN, 17TH CENTURY	11
44	CHINTZ STRIPED BED COVER	SPAIN, 18TH CENTURY	10
45	CHINTZ BED COVER Figural design.	SPAIN, 18TH CENTURY	26
46	CHINTZ BED COVER Varied colors.	SPAIN, 18TH CENTURY	
47	CHINTZ BED COVER Varied colors.	SPAIN, 18TH CENTURY	
48	LOUIS XIV BROCADE CHASUBLE	SPAIN, 17TH CENTURY	25
49	SALMON-PINK BROCADE CHASUBLE	SPAIN, 18TH CENTURY	12 50
50	SALMON-PINK BROCADE CHASUBLE	SPAIN, 18TH CENTURY	15
51	SALMON-PINK BROCADE CHASUBLE	SPAIN, 18TH CENTURY	12 50
52	SALMON-PINK BROCADE CHASUBLE	SPAIN, 17TH CENTURY	27 50

513 50

72 50

53 RED VELVET CHASUBLE SPAIN, 16TH CENTURY

40

54 PAIR OF LOUIS XIV WALNUT SIDE CHAIRS
SPAIN, 17TH CENTURY

Upholstered in red damask. (2)

17 50

55 LOUIS XIV WALNUT CHAIR WITH CANE SEAT
SPAIN, 17TH CENTURY

22 50

56 LOUIS XIV WALNUT CHAIR WITH CANE SEAT
SPAIN, 17TH CENTURY

42 50

57 PAIR OF CARVED CHAIRS
SPAIN, 17TH CENTURY
(2)

58 PAIR OF CARVED CHAIRS
SPAIN, 17TH CENTURY
(2)

59 PHILIPPE II WALNUT CHAIR UPHOLSTERED IN LEATHER
SPAIN, 17TH CENTURY
So-called "frailero" chair.

60 "FRAILERO" WALNUT CHAIR UPHOLSTERED IN LEATHER
SPAIN, 17TH CENTURY

61 "FRAILERO" WALNUT CHAIR UPHOLSTERED IN LEATHER
SPAIN, 17TH CENTURY

62 "FRAILERO" WALNUT CHAIR UPHOLSTERED IN LEATHER
SPAIN, 17TH CENTURY

35

63 SMALL PHILIPPE II WALNUT TABLE
With turned legs. SPAIN, 17TH CENTURY

45

64 SMALL PHILIPPE II WALNUT TABLE
With turned legs. SPAIN, 17TH CENTURY

50

65 SMALL WALNUT TABLE
Fitted with one drawer. Lyre-shaped bracket supports at the ends. SPAIN, 17TH CENTURY

45

66 SMALL WALNUT TABLE
Fitted with drawers. Lyre-shaped bracket supports at the ends. SPAIN, 17TH CENTURY

67 WALNUT BENCH SPAIN, 17TH CENTURY

60

68 CARVED CHEST WITH PANELS SPAIN, 17TH CENTURY

943 50

943 50

- 69 WALNUT CHEST SPAIN, 17TH CENTURY
Carved with coats of arms.
- 70 CARVED CHEST SPAIN, 17TH CENTURY
- 71 CARVED TABLE WITH DRAWERS SPAIN, 17TH CENTURY
- 72 PAIR OF LEATHER "FRAILERO" CHAIRS SPAIN, 17TH CENTURY
(2)
- 73 PAIR OF CARVED AND SILVERED CHANDELIERS SPAIN, 17TH CENTURY
(2)
- 74 PAIR OF CARVED AND SILVERED CHANDELIERS SPAIN, 17TH CENTURY
(2)
- 75 PAIR OF CARVED AND SILVERED CHANDELIERS SPAIN, 17TH CENTURY
(2)
- 76 BRONZE PROCESSIONAL CROSS SPAIN, 16TH CENTURY
Carved stand.
- 77 BRONZE PROCESSIONAL CROSS SPAIN, 16TH CENTURY
Carved stand.
- 78 BRONZE BRAZIER SPAIN, 17TH CENTURY
- 79 YELLOW DAMASK SPREAD SPAIN, 17TH CENTURY
- 80 RED DAMASK SPREAD SPAIN, 17TH CENTURY
- 81 BLUE DAMASK SPREAD SPAIN, 17TH CENTURY
- 82 SATIN BED COVER PATTERNED IN RED SPAIN, 17TH CENTURY
- 83 BRONZE MORTAR SPAIN, 16TH CENTURY
- 84 BRONZE MORTAR WITH STAR DECORATION SPAIN, 16TH CENTURY
- 85 BRONZE MORTAR SPAIN, 16TH CENTURY
Decorated with coat of arms.

65

15

11

12

37 50

60

34 50

87 50

27 50

13

5

12

1326/50

1326 50

10

86 BRONZE MORTAR DECORATED WITH CLASSIC BUSTS
SPAIN, 16TH CENTURY

10

87 BRONZE MORTAR
SPAIN, 16TH CENTURY

17

88 BRONZE MORTAR
Decoration of heads.
SPAIN, 16TH CENTURY

20

89 STRIP OF DRAWNWORK EMBROIDERY
SPAIN, 17TH CENTURY

25

90 STRIP OF DRAWNWORK EMBROIDERY
SPAIN, 17TH CENTURY

20

91 FILET LACE STRIP
SPAIN, 17TH CENTURY

18

92 FILET LACE STRIP
SPAIN, 18TH CENTURY

20

93 FILET LACE STRIP
SPAIN, 18TH CENTURY

20

94 FILET LACE STRIP
With design of castles and lions.
SPAIN, 18TH CENTURY

17 50

95 FILET LACE STRIP
With heraldic design of castles and lions.
SPAIN, 18TH CENTURY

12 50

96 TABLECLOTH EMBROIDERED IN BROWN
SPAIN, 17TH CENTURY

14 50

97 EMBROIDERED TABLECLOTH
SPAIN, 17TH CENTURY

12 50

98 EMBROIDERED TABLECLOTH
SPAIN, 17TH CENTURY

17 50

99 TENERIFE LACE TABLECLOTH
SPAIN, 17TH CENTURY

32 50

100 TABLE COVER WITH POLYCHROME EMBROIDERY
SPAIN, 17TH CENTURY

10

101 TABLE COVER EMBROIDERED IN BROWN
SPAIN, 17TH CENTURY

14 50

102 TABLE COVER WITH POLYCHROME EMBROIDERY
SPAIN, 18TH CENTURY

14

103 TABLE COVER WITH POLYCHROME EMBROIDERY
SPAIN, 18TH CENTURY

1641

104	PAIR OF SILVERED WOODEN ALTAR CHANDELIERS (2)	SPAIN, 17TH CENTURY	1641 15
105	PAIR OF SILVERED WOODEN ALTAR CHANDELIERS (2)	SPAIN, 17TH CENTURY	20
106	PAIR OF IRON FIRE DOGS (2)	SPAIN, 17TH CENTURY	12 50
107	PAIR OF IRON FIRE DOGS (2)	SPAIN, 17TH CENTURY	12 50
108	PAIR OF IRON FIRE DOGS (2)	SPAIN, 17TH CENTURY	20
109	PAIR OF ANDIRONS WITH BRONZE FINIALS (2)	SPAIN, 17TH CENTURY	
110	FIELD OF TILES WITH RENAISSANCE BUSTS	SPAIN, 16TH CENTURY	4
111	FIELD OF TILES	SPAIN, 17TH CENTURY	
112	FIELD OF TILES	SPAIN, 17TH CENTURY	
113	MOORISH TILE FIELD	SPAIN, 14TH CENTURY	13
114	FIELD OF RENAISSANCE TILES Decorated with busts of Roman emperors.	SPAIN, 16TH CENTURY	10
115	FIELD OF RENAISSANCE TILES Decorated with busts of Roman emperors.	SPAIN, 16TH CENTURY	
116	CARTOUCHE-SHAPED GILT MIRROR WITH CANDLE SCONCES Richly carved frame.	SPAIN, 17TH CENTURY	40
117	STRIP OF FILET LACE	SPAIN, 16TH CENTURY	17
118	STRIP OF FILET LACE	SPAIN, 18TH CENTURY	18
119	STRIP OF DRAWNWORK	SPAIN, 17TH CENTURY	13

1836

20

120 STRIP OF FILET LACE SPAIN, 16TH CENTURY

12 50

121 STRIP OF DRAWNWORK SPAIN, 17TH CENTURY

17

122 STRIP OF FILET LACE SPAIN, 18TH CENTURY

12 50

123 STRIP OF DRAWNWORK SPAIN, 17TH CENTURY

20

124 STRIP OF FILET LACE SPAIN, 17TH CENTURY

37 50

125 FILET LACE TABLE COVER SPAIN, 17TH CENTURY

27 50

126 DRAWNWORK TABLE COVER SPAIN, 17TH CENTURY

35

127 VENETIAN TABLE COVER TRIMMED WITH LACE
SPAIN, 17TH CENTURY

27 50

128 SALAMANCA BED COVER WITH COLORED EMBROIDERY
SPAIN, 17TH CENTURY

50

129 SMALL CARVED SHRINE WITH VIRGIN OF PITY
SPAIN, 16TH CENTURY

26

130 PAINTING ON PANEL
Representing Isabel la Catolica. SPAIN, 16TH CENTURY

55

131 SMALL RED VELVET COFFER SPAIN, 16TH CENTURY

20

132 SMALL LEATHER COFFER STUDED WITH NAILS
SPAIN, 16TH CENTURY

45

133 RED DAMASK CHAIR WITH APPLIQUE WORK
SPAIN, 17TH CENTURY

134 RED DAMASK CHAIR SPAIN, 17TH CENTURY

37 50

135 RED DAMASK CHAIR SPAIN, 17TH CENTURY

75

136 RED VELVET CHAIR WITH APPLIQUE DECORATION
SPAIN, 17TH CENTURY

80

137 CARVED BENCH SPAIN, 17TH CENTURY

95

138 CARVED BENCH SPAIN, 17TH CENTURY

180

139 RED VELVET BENCH SPAIN, 17TH CENTURY

2709

140	LOUIS XV ARMCHAIR <i>Respaldado</i>	SPAIN, 18TH CENTURY	2709 40
141	LOUIS XVI ARMCHAIR	SPAIN, 18TH CENTURY	35
142	PAIR OF CARVED CHAIRS (2)	SPAIN, 17TH CENTURY	60
143	LOUIS XIV SOFA <i>verde</i>	SPAIN, 17TH CENTURY	
144	BRASS HANGING LAMP	SPAIN, 17TH CENTURY	12 50
145	BRASS HANGING LAMP	SPAIN, 17TH CENTURY	10
146	BRASS HANGING LAMP	SPAIN, 17TH CENTURY	20
147	BRASS HANGING LAMP	SPAIN, 17TH CENTURY	20
148	BRASS HANGING LAMP	SPAIN, 17TH CENTURY	27
149	SMALL WRITING CABINET DECORATED WITH INCRUSTATIONS [SEE ILLUSTRATION, PAGE 10]	SPAIN, 17TH CENTURY	185
150	STRIP OF FILET LACE	SPAIN, 16TH CENTURY	16
151	STRIP OF FILET LACE	SPAIN, 17TH CENTURY	12 50
152	STRIP OF FILET LACE	SPAIN, 17TH CENTURY	
153	STRIP OF FILET LACE	SPAIN, 16TH CENTURY	17 50
154	STRIP OF FILET LACE Figural decoration.	SPAIN, 17TH CENTURY	
155	STRIP OF DRAWNWORK	SPAIN, 17TH CENTURY	10
156	STRIP OF FILET LACE	SPAIN, 17TH CENTURY	12
157	STRIP OF DRAWNWORK	SPAIN, 17TH CENTURY	13
158	STRIP OF DRAWNWORK	SPAIN, 17TH CENTURY	10
159	STRIP OF DRAWNWORK	SPAIN, 17TH CENTURY	11
160	STRIP OF FILET LACE	SPAIN, 17TH CENTURY	
161	STRIP OF FILET LACE	SPAIN, 17TH CENTURY	



SMALL SPANISH 17TH CENTURY WRITING CABINET
DECORATED WITH INCRUSTATIONS
[NUMBER 149]

162	STRIP OF FILET LACE	SPAIN, 17TH CENTURY
163	EMBROIDERED TABLE COVER	SPAIN, 16TH CENTURY
164	TABLECLOTH TRIMMED WITH VENETIAN LACE	SPAIN, 16TH CENTURY
165	FILET LACE TABLE COVER	SPAIN, 16TH CENTURY
166	FILET LACE SPREAD	SPAIN, 16TH CENTURY
167	FILET LACE SPREAD	SPAIN, 16TH CENTURY
168	BLUE DAMASK SPREAD	SPAIN, 17TH CENTURY
169	RED DAMASK SPREAD	SPAIN, 17TH CENTURY
170	LOUIS XIII SILK SPREAD	SPAIN, 17TH CENTURY
171	COLORED CHINTZ BED COVER	SPAIN, 18TH CENTURY
172	COLORED CHINTZ BED COVER	SPAIN, 18TH CENTURY
173	COLORED CHINTZ BED COVER WITH CHINOISERIE DESIGN	SPAIN, 18TH CENTURY
174	COLORED CHINTZ BED COVER	SPAIN, 18TH CENTURY
175	TALAVERA JAR	SPAIN, 18TH CENTURY
176	TALAVERA WATER JAR	SPAIN, 18TH CENTURY
177	TOLEDO JUG With coat of arms of the order of Calatrava.	SPAIN, 17TH CENTURY
178	DOUBLE DOOR With geometrical interlacing work showing Moorish influence.	SPAIN, 17TH CENTURY
179	DOOR WITH SQUARE PANELLING	SPAIN, 17TH CENTURY
180	DOOR STUDDED WITH IRON NAILS With knocker.	SPAIN, 16TH CENTURY
181	DOOR WITH GEOMETRICAL INTERLACINGS IN MOORISH STYLE	SPAIN, 16TH CENTURY

3220 50

17 50

17 50

32 50

30

42 50

37 50

19

22 50

55

170

45

3709 50

3709 50

182 LOUIS XVI BED LACQUERED IN COLOR SPAIN, 18TH CENTURY

183 PAINTING, FLOWER, STILL LIFE *Ruinado* SPAIN, 18TH CENTURY

75

184 HERALDIC IRON PANEL SPAIN, 18TH CENTURY
With inscription in high relief.

40

185 ETERNAL LAMP WITH CROWN SPAIN, 16TH CENTURY

57 50

186 ETERNAL LAMP WITH CROWN SPAIN, 16TH CENTURY

60

187 STAR-SHAPED LAMP SPAIN, 17TH CENTURY

115

188 STAR-SHAPED LAMP SPAIN, 17TH CENTURY
With crown and iron bracket stand.

37 50

189 TILE FIELD SPAIN, 16TH CENTURY
With coat of arms of Charles V.

37 50

190 TILE FIELD SPAIN, 16TH CENTURY
With coat of arms of Charles V.

190

191 GOTHIC CHAIR SPAIN, 15TH CENTURY
Carving in the panels.

[SEE ILLUSTRATION]

200

192 GOTHIC CHAIR SPAIN, 15TH CENTURY

115

193 SHRINE WITH VIRGIN AND CHILD SPAIN, 17TH CENTURY

80

194 SHRINE WITH VIRGIN SPAIN, 17TH CENTURY
Gilt and polychrome wood, face and hands in ivory.

195 LARGE REFECTORY TABLE SPAIN, 17TH CENTURY

196 LARGE REFECTORY TABLE SPAIN, 17TH CENTURY

197 LARGE REFECTORY TABLE SPAIN, 17TH CENTURY

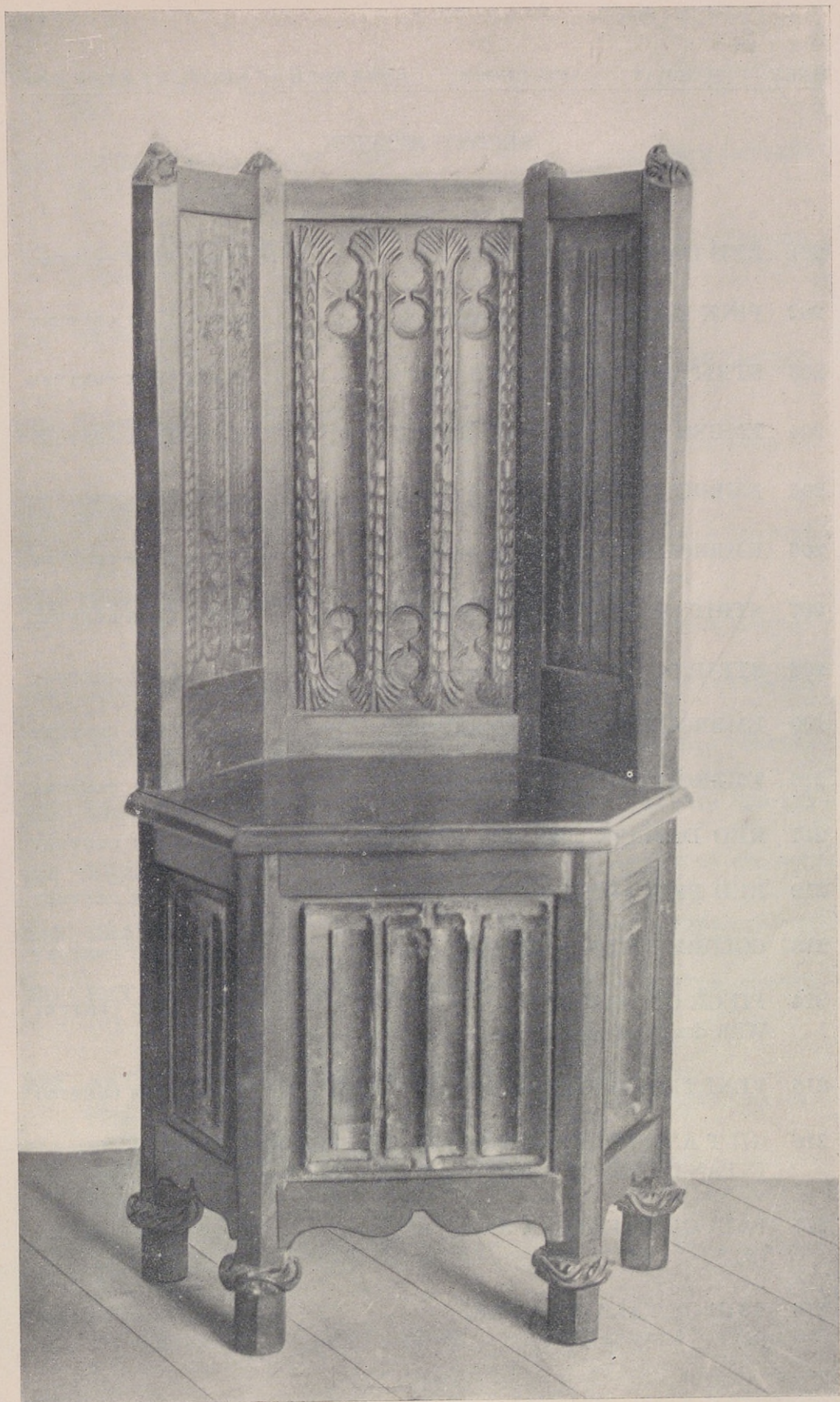
198 LARGE REFECTORY TABLE SPAIN, 17TH CENTURY

150

199 TRIPTYCH SPAIN, 16TH CENTURY
Virgin and Child in centre, on the wings Magdalene and the resurrection of Lazarus.

200 MISSAL SPAIN, 16TH CENTURY
Fine manuscript with large characters hand-written on vellum.

4867



GOTHIC CARVED CHAIR
[NUMBER 191]

SECOND SESSION

NUMBERS 201-400

5	201	RED DAMASK TABLE COVER	SPAIN, 17TH CENTURY
	202	PINK DAMASK TABLE COVER	SPAIN, 17TH CENTURY
	203	STRIP OF YELLOW DAMASK	SPAIN, 17TH CENTURY
12	204	EMBROIDERED TABLE COVER	SPAIN, 17TH CENTURY
9	205	EMBROIDERED TABLE COVER	SPAIN, 17TH CENTURY
11	206	EMBROIDERED TABLE COVER	SPAIN, 18TH CENTURY
10	207	STRIP OF EMBROIDERED SILK	SPAIN, 18TH CENTURY
10	208	STRIP OF SILK	SPAIN, 17TH CENTURY
6	209	EMBROIDERED TABLE COVER	SPAIN, 18TH CENTURY
8	210	EMBROIDERED TABLE COVER	SPAIN, 18TH CENTURY
8	211	RED DAMASK CHURCH BANNER	SPAIN, 17TH CENTURY
10	212	RED BROCADE TABLE COVER	SPAIN, 17TH CENTURY
31	213	COLORED SILK CURTAIN	SPAIN, 17TH CENTURY
17	214	PIECE OF BROCADE With design of leaf sprays.	SPAIN, 18TH CENTURY
10	215	VENETIAN BROCADE TABLE COVER	SPAIN, 17TH CENTURY
15	216	GILT AND POLYCHROME WOODEN CARVING OF THE INFANT CHRIST	SPAIN, 17TH CENTURY
6	217	PAIR OF TALAVERA JARS (2)	SPAIN, 17TH CENTURY
6	218	PAIR OF TALAVERA JARS (2)	SPAIN, 17TH CENTURY

219	PAIR OF TALAVERA JARS (2)	SPAIN, 17TH CENTURY	6
220	PAIR OF RED GLASS JARS Cylindrical shape. (2)	SPAIN, 18TH CENTURY	5
221	PAIR OF RED GLASS JARS Cylindrical shape. (2)	SPAIN, 18TH CENTURY	7
222	MORTAR DECORATED WITH MASCARONS	SPAIN, 17TH CENTURY	6
223	MORTAR DECORATED WITH MASCARONS	SPAIN, 17TH CENTURY	6
224	MORTAR DECORATED WITH MASCARONS	SPAIN, 16TH CENTURY	8
225	BRONZE MORTAR WITH SHELL DECORATION	SPAIN, 16TH CENTURY	11
226	BRONZE MORTAR WITH MASCARONS	SPAIN, 16TH CENTURY	11
227	BRONZE MORTAR WITH MASCARONS	SPAIN, 16TH CENTURY	4
228	BRASS OIL LAMP	SPAIN, 18TH CENTURY	10
229	BRASS OIL LAMP	SPAIN, 18TH CENTURY	
230	BRASS OIL LAMP	SPAIN, 18TH CENTURY	14
231	SET OF EIGHT RED SILK TASSELS (8)	SPAIN, 17TH CENTURY	10
232	SET OF EIGHT CREAM-COLORED SILK TASSELS (8)	SPAIN, 17TH CENTURY	
233	SET OF EIGHT BLUE SILK TASSELS (8)	SPAIN, 17TH CENTURY	13
234	SET OF SIX RED SILK TASSELS (6)	SPAIN, 17TH CENTURY	10
235	EMBROIDERED TABLE COVER	SPAIN, 17TH CENTURY	9

174

310
11

236 TABLE COVER WITH COLORED EMBROIDERY
SPAIN, 17TH CENTURY

11

237 EMBROIDERED TABLE COVER
SPAIN, 18TH CENTURY

16

238 STRIP OF FILET LACE
SPAIN, 17TH CENTURY

15

239 STRIP OF FILET LACE
SPAIN, 17TH CENTURY

30

240 VENETIAN LACE TABLE CLOTH
ITALY, 17TH CENTURY

241 SMALL BLUE EMBROIDERED TABLE CLOTH
SPAIN, 17TH CENTURY

11

242 STRIP OF DRAWNWORK
SPAIN, 17TH CENTURY

11

243 PIECE OF DRAWNWORK
SPAIN, 17TH CENTURY

244 STRIP OF DRAWNWORK
SPAIN, 17TH CENTURY

245 STRIP OF DRAWNWORK
SPAIN, 17TH CENTURY

246 STRIP OF DRAWNWORK
SPAIN, 17TH CENTURY

20

247 STRIP OF FILET LACE
SPAIN, 17TH CENTURY

13

248 STRIP OF DRAWNWORK
SPAIN, 17TH CENTURY

10

249 STRIP OF DRAWNWORK
SPAIN, 17TH CENTURY

25

250 STRIP OF FILET LACE
SPAIN, 18TH CENTURY

15

251 STRIP OF FILET LACE
SPAIN, 17TH CENTURY

25

252 DRAWNWORK SPREAD
SPAIN, 17TH CENTURY

57 50

253 FILET LACE BED CANOPY
SPAIN, 17TH CENTURY

50

254 BRACKET LAMP
The lamp suspended from iron wall bracket.
SPAIN, 17TH CENTURY

51

255 LAMP SUSPENDED FROM WROUGHT-IRON BRACKET
SPAIN, 17TH CENTURY

22

256 LANTERN
SPAIN, 17TH CENTURY

70350

257	LANTERN	SPAIN, 17TH CENTURY	703 50
258	LANTERN <i>with braquet</i>	SPAIN, 17TH CENTURY	17 50 52 50
259	BRONZE COW BELL	SPAIN, 17TH CENTURY	11
260	WALNUT SIDE CHAIR	SPAIN, 17TH CENTURY	12
261	TWO LEATHER CHAIRS (2)	SPAIN, 17TH CENTURY	37 50
262	CARVED AND GILT PEDESTAL	SPAIN, 18TH CENTURY	
263	CARVED AND GILT PEDESTAL	SPAIN, 18TH CENTURY	
264	CARVED AND POLYCHROME PEDESTAL WITH GILDING	SPAIN, 17TH CENTURY	60
265	CARVED AND POLYCHROME PEDESTAL WITH GILDING	SPAIN, 17TH CENTURY	70
266	DAMASK-COVERED ARMCHAIR, ENGLISH SHERATON STYLE	SPAIN, 18TH CENTURY	
267	DAMASK-COVERED ARMCHAIR, ENGLISH SHERATON STYLE	SPAIN, 18TH CENTURY	40
268	TWO LOUIS XIV CHAIRS (2)	SPAIN, 17TH CENTURY	
269	PAIR OF CARVED CHAIRS (2)	SPAIN, 17TH CENTURY	40
270	PAIR OF CARVED AND POLYCHROME WOODEN RELIEFS	SPAIN, 16TH CENTURY	17 50
	Legendary compositions. (2)		
271	CARVED AND POLYCHROME COAT OF ARMS OF CASTILLA	SPAIN, 16TH CENTURY	27 50
272	ALBUM OF ETCHINGS BY GOYA The disasters of war.		18
273	ALBUM OF ETCHINGS BY GOYA The proverbios.		15

1122

40

274 ALBUM OF ETCHINGS BY GOYA
The caprichos.

29 50

275 ALBUM OF ETCHINGS BY GOYA
The art of bullfighting.

17 50

276 ALBUM OF ETCHINGS BY GALVAN AFTER GOYA
The fresco paintings by Goya in San Antonio de la Florida.

15

277 CARVED CHAIR SPAIN, 17TH CENTURY

45

278 PAIR OF SIDE CHAIRS SPAIN, 17TH CENTURY
(2)

21

279 CARVED SIDE CHAIR SPAIN, 17TH CENTURY

120

280 SET OF SIX SIDE CHAIRS SPAIN, 17TH CENTURY
Rush seats, openwork backs, showing Moorish influence. (6)

65

281 PAIR OF CARVED CHAIRS SPAIN, 17TH CENTURY
(2)

60

282 PAIR OF STOOLS SPAIN, 17TH CENTURY
Upholstered in red damask. (2)

13

283 CARVING OF CHRIST SPAIN, 17TH CENTURY

15

284 SMALL CARVING OF VIRGIN AND CHILD SPAIN, 17TH CENTURY

12

285 BELL WITH COAT OF ARMS SPAIN, 15TH CENTURY

19

286 BRONZE BELL IN THE FORM OF A WOMAN SPAIN, 18TH CENTURY

9

287 BONE FAN WITH COLOR PRINT MOUNTING

10

288 BRONZE COW BELL SPAIN, 17TH CENTURY

5

289 COPPER PLAQUE SPAIN, 16TH CENTURY
With representation of Christ, seated.

4

290 IVORY SUNSHADE HANDLE SPAIN, 18TH CENTURY

47 50

291 SET OF THREE ECCLESIASTICAL VESTMENTS SPAIN, 17TH CENTURY
(3)

1667 50

292	COPE OF BLACK SILK	SPAIN, 17TH CENTURY	11
293	TWO STRIPS OF BLACK SILK FABRIC (2)	SPAIN, 17TH CENTURY	9
294	SILK BROCADE MANTLE Formerly used for a statue of the Holy Virgin.	SPAIN, 17TH CENTURY	30
295	STRIP OF SALMON-COLORED VELVET	SPAIN, 17TH CENTURY	55
296	STRIP OF EMBROIDERED FABRIC	SPAIN, 17TH CENTURY	65
297	SILK BROCADE MANTLE Formerly used for a statue of the Holy Virgin.	SPAIN, 17TH CENTURY	35
298	STRIP OF DRAWNWORK	SPAIN, 17TH CENTURY	10
299	STRIP OF DRAWNWORK	SPAIN, 17TH CENTURY	12 50
300	EIGHT CREAM AND GOLD COLORED TASSELS (8)	SPAIN, 18TH CENTURY	
301	EIGHT YELLOW AND GOLD TASSELS (8)	SPAIN, 18TH CENTURY	11
302	STRIP OF DRAWNWORK	SPAIN, 17TH CENTURY	9
303	PIECE OF LOUIS XV WHITE AND GOLD BROCADE	SPAIN, 18TH CENTURY	26
304	STRIP OF DRAWNWORK	SPAIN, 17TH CENTURY	10
305	STRIP OF FILET LACE WITH FIGURAL PATTERN	SPAIN, 17TH CENTURY	45
306	CHINTZ SPREAD	SPAIN, 18TH CENTURY	
307	CHINTZ SPREAD	SPAIN, 18TH CENTURY	17
308	RED SILK SPREAD	SPAIN, 18TH CENTURY	31
309	RED DAMASK SPREAD	SPAIN, 17TH CENTURY	35
310	RED DAMASK SPREAD	SPAIN, 17TH CENTURY	
311	GREEN SILK SPREAD	SPAIN, 17TH CENTURY	

2049
45
18
25

65

55

11

12

2750

12

1750

21

1750

- 312 BLUE DAMASK SPREAD SPAIN, 17TH CENTURY
- 313 CHINTZ SPREAD SPAIN, 18TH CENTURY
- 314 CHINTZ SPREAD WITH PHEASANT DESIGN
SPAIN, 18TH CENTURY
- 315 YELLOW DAMASK SPREAD SPAIN, 17TH CENTURY
- 316 MISSAL HAND-WRITTEN ON VELLUM SPAIN, 16TH CENTURY
- 317 MISSAL HAND-WRITTEN ON VELLUM SPAIN, 16TH CENTURY
- 318 MISSAL HAND-WRITTEN ON VELLUM SPAIN, 16TH CENTURY
- 319 MISSAL HAND-WRITTEN ON VELLUM SPAIN, 16TH CENTURY
- 320 MISSAL HAND-WRITTEN ON VELLUM SPAIN, 16TH CENTURY
- 321 STRIP OF DRAWNWORK SPAIN, 17TH CENTURY
- 322 STRIP OF FILET LACE SPAIN, 17TH CENTURY
- 323 STRIP OF FILET LACE SPAIN, 17TH CENTURY
- 324 STRIP OF FILET LACE SPAIN, 17TH CENTURY
- 325 STRIP OF DRAWNWORK SPAIN, 17TH CENTURY
- 326 STRIP OF FILET LACE SPAIN, 17TH CENTURY
- 327 STRIP OF DRAWNWORK SPAIN, 17TH CENTURY
- 328 STRIP OF LACE WITH BRANCH DESIGN SPAIN, 17TH CENTURY
- 329 FILET LACE BED COVER WITH BRANCH DESIGN
SPAIN, 17TH CENTURY
- 330 FILET LACE BED COVER WITH BRANCH DESIGN
SPAIN, 17TH CENTURY
- 331 FILET LACE TABLE COVER WITH HORSE MOTIVES
SPAIN, 17TH CENTURY
- 332 STRIP OF FILET LACE SPAIN, 17TH CENTURY
- 333 STRIP OF FILET LACE SPAIN, 17TH CENTURY

2405/50

- 2405 50
- 334 STRIP OF FILET LACE WITH BRANCH MOTIVES
SPAIN, 17TH CENTURY
- 335 STRIP OF DRAWNWORK
SPAIN, 17TH CENTURY
- 336 TABLE COVER WITH LACE DECORATION
SPAIN, 17TH CENTURY
- 337 DRAWNWORK TABLE SPREAD
SPAIN, 17TH CENTURY
- 338 FILET LACE TABLE COVER
SPAIN, 17TH CENTURY
- 339 FILET LACE SPREAD WITH VASE DECORATION
SPAIN, 16TH CENTURY
- 340 FILET LACE SPREAD ~~WITH VASE~~ DECORATION
SPAIN, 17TH CENTURY
- 341 SPREAD WITH SALAMANCA EMBROIDERY
SPAIN, 17TH CENTURY
- 342 SET OF FOUR CARVED AND GILT MIRRORS
SPAIN, 18TH CENTURY
Cartouche-shaped, with sconces. (4)
- 343 CARVED AND GILT MIRROR
SPAIN, 17TH CENTURY
Cartouche-shaped, with sconces.
- 344 POLYCHROME AND GILT WOODCARVING
SPAIN, 17TH CENTURY
Representing St. Michael, with carved wooden base.
- 345 LARGE POTTERY VASE WITH WOODEN BRACKET BASE
SPAIN, 17TH CENTURY
- 346 TALAVERA VASE WITH DECORATION OF IMPERIAL EAGLES
SPAIN, 17TH CENTURY
- 347 LARGE ANDALUSIAN JUG *Glenterio's*
SPAIN, 18TH CENTURY
- 348 PAIR OF LARGE VASES
SPAIN, 17TH CENTURY
From the antique manufactory of Mon Cloa. (2)
- 349 IRON WINDOW FRAME FROM TOLEDO
SPAIN, 17TH CENTURY
With double hinged grating. *San Antonio*
- 350 TOLEDO IRON WINDOW GRATING *Suero's*
SPAIN, 17TH CENTURY
- 351 IRON GRATING WITH SCROLLED TOP
SPAIN, 17TH CENTURY

12

26

35

90

60

17 50

52 50

23

26

115

52 50

95

3010
185

352 RARE IRON KITCHEN UTENSIL SPAIN, 16TH CENTURY

165

353 VARGUENO WITH IVORY INCRUSTATIONS
SPAIN, 16TH CENTURY

2950

354 ALTAR CANDLESTICK SPAIN, 17TH CENTURY

355² ALTAR CANDLESTICK SPAIN, 17TH CENTURY

35

356 PAIR OF ALTAR CANDLESTICKS
(2) SPAIN, 17TH CENTURY

357 PAIR OF ALTAR CANDLESTICKS
(2) SPAIN, 17TH CENTURY

358 PAIR OF ALTAR CANDLESTICKS
(2) SPAIN, 17TH CENTURY

55

359 PAIR OF ALTAR CANDLESTICKS
(2) SPAIN, 17TH CENTURY

90

360 PAIR OF ALTAR CANDLESTICKS
(2) SPAIN, 17TH CENTURY

361 GILT METAL ALTAR CROSS SPAIN, 17TH CENTURY

362 IVORY CRUCIFIX
On stand with drawer. SPAIN, 17TH CENTURY

363 METAL PROCESSIONAL CROSS SPAIN, 16TH CENTURY

364 METAL PROCESSIONAL CROSS
With wooden stand. SPAIN, 16TH CENTURY

80

365 WROUGHT-IRON CANDLESTICK SPAIN, 16TH CENTURY

115

366 WROUGHT-IRON "TENEBRARIO", OR CANDLESTICK WITH
PRICKETS SPAIN, 16TH CENTURY

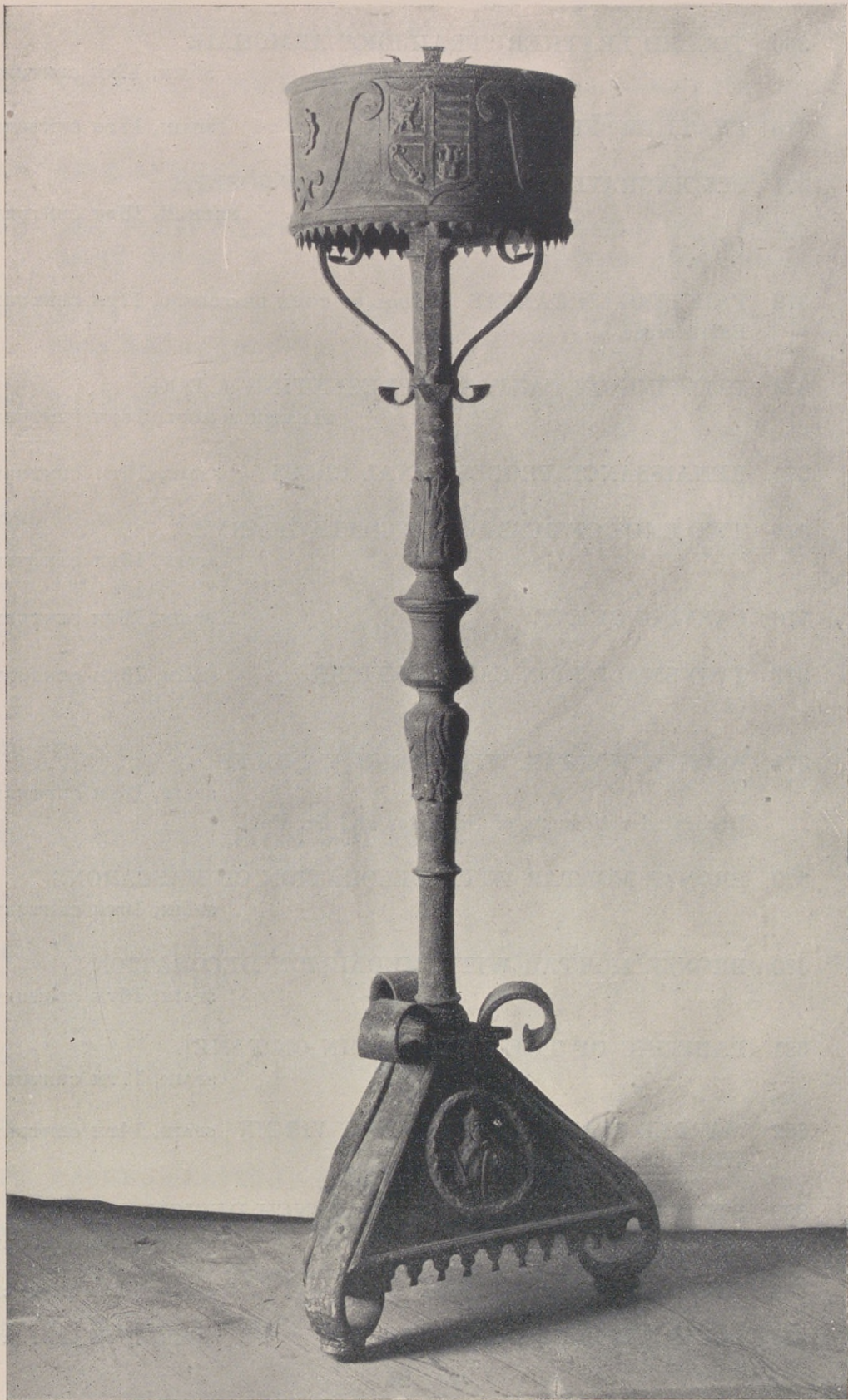
290

367 WROUGHT-IRON TORCH STAND SPAIN, 16TH CENTURY
Repoussé decoration; coat of arms.

[SEE ILLUSTRATION]

368 PHILLIPPE II "FRAILERO" LEATHER ARMCHAIR
SPAIN, 17TH CENTURY

4052 50



SPANISH 16TH CENTURY WROUGHT-IRON TORCH STAND
[NUMBER 367]

4052 50
45

369 TOOLED LEATHER "FRAILERO" ARMCHAIR
SPAIN, 17TH CENTURY

370 LEATHER "FRAILERO" CHAIR
SPAIN, 17TH CENTURY

40

371 SIX ENGRAVINGS OF THE STORY OF JOSEPH
FRENCH, 18TH CENTURY
(6)

55

372 PAINTING ON CANVAS SCHOOL OF JOHN DE TOLEDO, 17TH CENTURY
Battle scene.

373 PAINTING ON CANVAS REPRESENTING A DOG
FLEMISH SCHOOL, 18TH CENTURY

374 RENAISSANCE PROCESSIONAL CROSS
SPAIN, 16TH CENTURY

30

375 TWO ENDS OF BEAM WITH COATS OF ARMS
SPAIN, 16TH CENTURY

25

376 CARVING OF EVE
SPAIN, 16TH CENTURY

22 50

377 TWO SMALL IRON CANDLESTICKS
SPAIN, 16TH CENTURY
(2)

22 50

378 BRONZE MORTAR WITH FOUR HANDLES
SPAIN, 16TH CENTURY
Decorated with busts of St. Peter and St. Paul.

32 50

379 BRONZE MORTAR WITH DECORATION OF MASCARONS
SPAIN, 16TH CENTURY

37 50

380 BRONZE MORTAR WITH MEDALLION DECORATION
SPAIN, 16TH CENTURY

75

381 PAINTING OF THE HOLY VIRGIN ON PANEL
SPAIN, 17TH CENTURY

190

382 MARBLE STATUE OF THE HOLY VIRGIN
SPAIN, 14TH CENTURY
With baldaquin of silver lace.

383 STRIP OF FILET LACE WITH BRANCH DESIGN
SPAIN, 17TH CENTURY

60

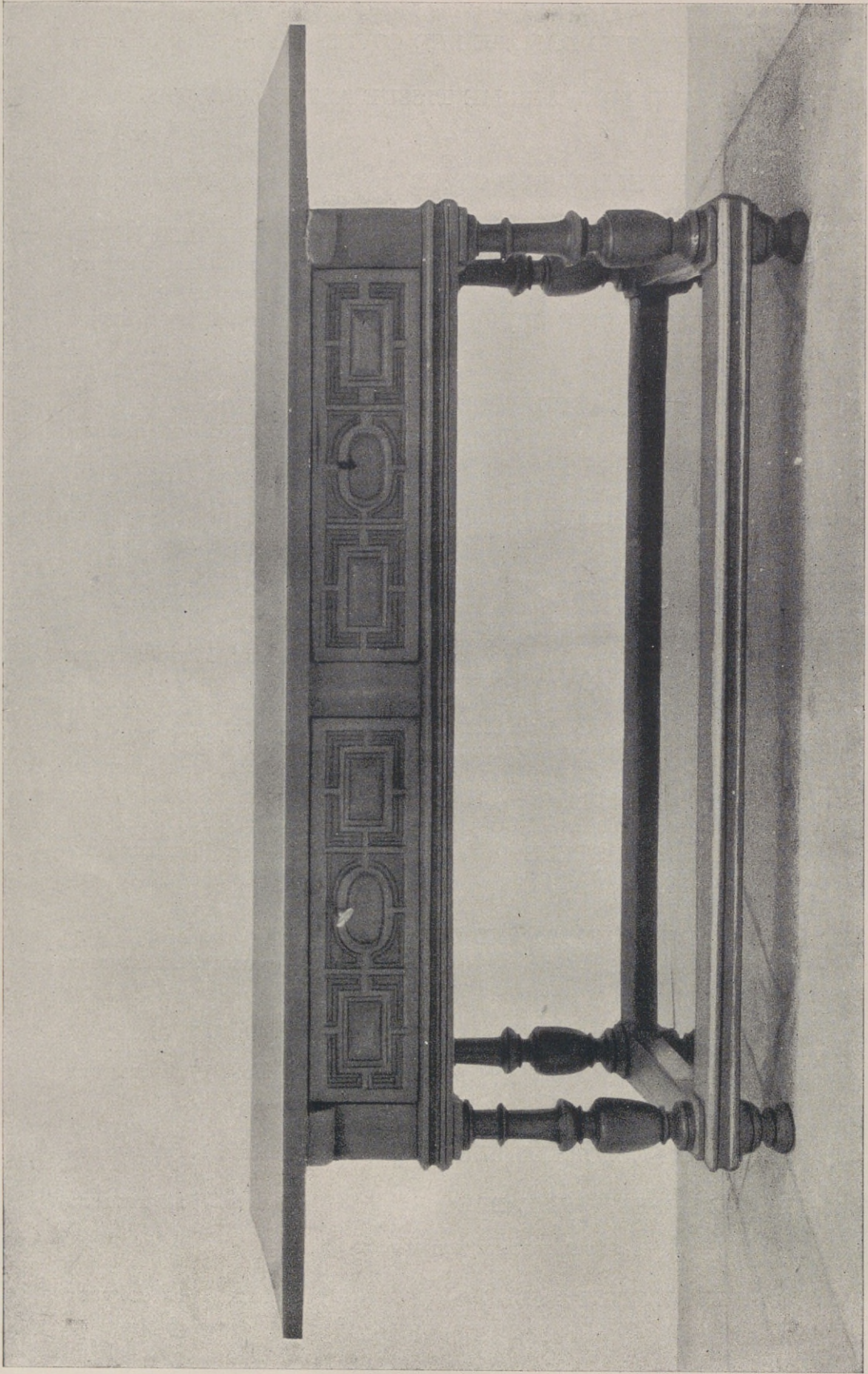
384 RED DAMASK BED COVER
SPAIN, 17TH CENTURY

50

385 LOUIS XVI BLUE BED COVER
SPAIN, 18TH CENTURY

4437 50

- 4937 50
- 386 CREAM-COLORED DAMASK BED COVER SPAIN, 17TH CENTURY
- 387 VIOLET AND POLYCHROME TISSUE ALTAR FRONTAL
SPAIN, 17TH CENTURY 75
- 388 BLUE AND YELLOW BED COVER SPAIN, 17TH CENTURY 65
- 389 RED VELVET BANNER WITH SAINT HOLDING THE HEAD
OF ST. JOHN SPAIN, 16TH CENTURY
- 390 BLUE DAMASK BED COVER SPAIN, 17TH CENTURY
Louis XIII pattern.
- 391 PAIR OF DECORATED WOODEN SHUTTERS
SPAIN, 17TH CENTURY 45
(2)
- 392 PAIR OF DECORATED WOODEN SHUTTERS
SPAIN, 17TH CENTURY
(2)
- 393 PAIR OF DECORATED WOODEN SHUTTERS
SPAIN, 17TH CENTURY 65
(2)
- 394 INLAID WOODEN FOLDING CARD TABLE WITH COAT OF
ARMS SPAIN, 18TH CENTURY 65
- 395 THREE RED DAMASK-COVERED ARMCHAIRS, ENGLISH
CHIPPENDALE STYLE SPAIN, 18TH CENTURY
(3)
- 396 TWO LARGE CARVED AND GILT RENAISSANCE
CANDLESTICKS SPAIN, 16TH CENTURY 180
(2)
- 397 FOUR LOUIS XIV RED DAMASK-COVERED CHAIRS
SPAIN, 17TH CENTURY
(4)
- 398 LARGE REFECTORY TABLE SPAIN, 17TH CENTURY 180
- 399 LARGE REFECTORY TABLE SPAIN, 16TH CENTURY
- [SEE ILLUSTRATION, PAGE 26]
- 400 CARVED WALNUT TABLE SPAIN, 17TH CENTURY 150



[NUMBER 399]
LARGE SPANISH 16TH CENTURY REFECTORY TABLE

THIRD SESSION

NUMBERS 401-601

401	THREE MAJOLICA PLATES	SPAIN, 17TH CENTURY	4
402	BRONZE INCENSE BURNER ON STAND	SPAIN, 18TH CENTURY	
403	STRIP OF WOVEN FABRIC	SPAIN, 17TH CENTURY	21
404	STRIP OF EMBROIDERED VELVET	SPAIN, 18TH CENTURY	
405	YELLOW DAMASK CHASUBLE	SPAIN, 17TH CENTURY	8
406	LOUIS XVI STYLE SILK BROCADE	SPAIN, 18TH CENTURY	
407	PIECE OF SILK BROCADE WITH EAGLE DECORATION	SPAIN, 17TH CENTURY	11
	Used as garment for a statue of the Holy Virgin.		
408	BLUE VELVET COSTUME CONSISTING OF TROUSERS AND WAISTCOAT	SPAIN, 18TH CENTURY	
409	SILK BROCADE CHASUBLE	SPAIN, 18TH CENTURY	10
410	SILK BROCADE CHASUBLE	SPAIN, 18TH CENTURY	15
411	DAMASK LOUIS XIV STYLE CHASUBLE	SPAIN, 17TH CENTURY	7
412	LOUIS XV STYLE SILK BROCADE	SPAIN, 18TH CENTURY	15
	A rare collector's specimen.		
413	STRIP OF SALMON-COLORED SILK BROCADE	SPAIN, 17TH CENTURY	15
414	PAIR OF TALAVERA PHARMACY JARS (2)	SPAIN, 17TH CENTURY	9
415	PAIR OF TALAVERA PHARMACY JARS (2)	SPAIN, 17TH CENTURY	8
416	PAIR OF TALAVERA PHARMACY JARS (2)	SPAIN, 17TH CENTURY	10

133
11

417 PAIR OF CYLINDRICAL RED GLASS JARS
SPAIN, 18TH CENTURY
(2)

8

418 PAIR OF CYLINDRICAL RED GLASS JARS
SPAIN, 18TH CENTURY
(2)

7

419 BRASS OIL LAMP ON STAND
SPAIN, 18TH CENTURY

420 BRASS OIL LAMP ON STAND
SPAIN, 18TH CENTURY

6

421 BRASS OIL LAMP ON STAND
SPAIN, 18TH CENTURY

7

422 IRON OIL HANGING LAMP
SPAIN, 17TH CENTURY

423 HAND-PAINTED SILK AND IVORY FAN
FRENCH, LATE 18TH CENTURY

424 FRENCH HAND-PAINTED FAN WITH TORTOISE-SHELL
FRAME *no excise*

425 HAND-PAINTED IVORY FRAME FAN
FRENCH, 18TH CENTURY

426 HAND-PAINTED FAN WITH IVORY FRAME
FRENCH, LATE 18TH CENTURY

427 LIMOGES ENAMEL PLAQUE
FRENCH, 16TH CENTURY
Mary and St. John under the Cross.

16

428 COLLECTION OF ELEVEN TEXTILE SAMPLES
Spanish, Coptic and Italian. (11)

429 COLLECTION OF TEN TEXTILE SAMPLES
SPAIN AND ITALY, 16TH-17TH CENTURY
(10)

430 COLLECTION OF TWELVE TEXTILE SAMPLES
SPAIN AND ITALY, 16TH-17TH CENTURY
(12)

12 50

431 COLLECTION OF NINE TEXTILE SAMPLES
SPAIN AND ITALY, 16TH-17TH CENTURY
(9)

200 50

- 432 COLLECTION OF TWELVE TEXTILE SAMPLES
SPAIN AND ITALY, 16TH-17TH CENTURY
 (12)
- 433 COLLECTION OF EIGHT TEXTILE SAMPLES
SPAIN AND ITALY, 16TH-17TH CENTURY
 (8)
- 434 COLLECTION OF FIFTEEN TEXTILE SAMPLES
SPAIN AND ITALY, 16TH-17TH CENTURY
 (15)
- 435 COLLECTION OF NINE TEXTILE SAMPLES
SPAIN AND ITALY, 16TH-17TH CENTURY
 (9)
- 436 COLLECTION OF ELEVEN TEXTILE SAMPLES
SPAIN AND ITALY, 16TH-17TH CENTURY
 (11)
- 437 COLLECTION OF NINE TEXTILE SAMPLES
SPAIN AND ITALY, 16TH-17TH CENTURY
 (9)
- 438 COLLECTION OF ELEVEN TEXTILE SAMPLES
ITALIAN AND ORIENTAL, 16TH-17TH CENTURY
 (11)
- 439 COLLECTION OF THIRTEEN TEXTILE SAMPLES
SPAIN AND ITALY, 16TH-17TH CENTURY
 (13)
- 440 COLLECTION OF TEN TEXTILE SAMPLES
SPAIN AND ITALY, 16TH-17TH CENTURY
 (10)
- 441 COLLECTION OF TWELVE TEXTILE SAMPLES
SPAIN AND ITALY, 16TH-17TH CENTURY
 (12)
- 442 COLLECTION OF TWELVE TEXTILE SAMPLES
SPAIN AND ITALY, 16TH-17TH CENTURY
 (12)

200 50

12 50

12 50

19

12

11

267 50

267 50

443 COLLECTION OF THIRTEEN TEXTILE SAMPLES
SPAIN AND ITALY, 16TH-17TH CENTURY
(13)

444 COLLECTION OF ELEVEN TEXTILE SAMPLES
SPAIN AND ITALY, 16TH-17TH CENTURY
(11)

11

445 STRIP OF DRAWNWORK SPAIN, 17TH CENTURY

12

446 STRIP OF DRAWNWORK SPAIN, 17TH CENTURY

26

447 STRIP OF FILET WORK SPAIN, 18TH CENTURY
Decoration of horses.

9

448 EMBROIDERED TABLE SPREAD SPAIN, 17TH CENTURY

14

449 PIECE OF BLUE AND GOLD BROCADE SPAIN, 17TH CENTURY

450 PIECE OF RED DAMASK SPAIN, 17TH CENTURY

17

451 STRIP OF FILET LACE SPAIN, 17TH CENTURY

25

452 STRIP OF FILET LACE WITH BRANCH DESIGN
SPAIN, 17TH CENTURY

9

453 EMBROIDERED TABLE SPREAD SPAIN, 17TH CENTURY

13

454 LINEN STRIP WITH EMBROIDERY SPAIN, 17TH CENTURY

10

455 EMBROIDERED TABLE SPREAD SPAIN, 17TH CENTURY

10

456 DRAWNWORK TABLE COVER SPAIN, 17TH CENTURY

8

457 CHINTZ BED COVER SPAIN, 18TH CENTURY

458 CHINTZ BED COVER SPAIN, 18TH CENTURY

18

459 CHINTZ BED COVER SPAIN, 18TH CENTURY

28

460 CHINTZ BED COVER SPAIN, 18TH CENTURY
With representations of Biblical scenes.

36

461 CHINTZ BED COVER SPAIN, 18TH CENTURY

513/50

462	CHINTZ BED COVER WITH CHINESE STYLE DECORATION	SPAIN, 18TH CENTURY	40	573 50
463	CHINTZ BED COVER WITH CHINESE STYLE DECORATION	SPAIN, 18TH CENTURY		
464	CHINTZ BED COVER	SPAIN, 18TH CENTURY		
465	CHINTZ BED COVER	SPAIN, 18TH CENTURY	37	50
466	STRIP OF LOUIS XVI EMBROIDERY	SPAIN, 18TH CENTURY	10	
467	STRIP OF GREEN BROCADE	SPAIN, 18TH CENTURY		
468	EMBROIDERED TABLE COVER	SPAIN, 18TH CENTURY	11	
469	SALMON-COLORED BROCADE CHASUBLE	SPAIN, 18TH CENTURY	14	50
470	PINK BROCADE CHASUBLE	SPAIN, 17TH CENTURY	12	50
471	TABLE COVER WITH APPLIQUE DECORATION	SPAIN, 16TH CENTURY	27	50
472	SET OF SIX PINK SILK TASSELS (6)	SPAIN, 18TH CENTURY	11	
473	SET OF FOUR COLORED SILK TASSELS (4)	SPAIN, 18TH CENTURY	10	
474	SET OF FOUR RED SILK TASSELS (4)	SPAIN, 18TH CENTURY	7	
475	SET OF EIGHT CREAM-COLORED SILK TASSELS (8)	SPAIN, 18TH CENTURY	8	
476	SET OF EIGHT GREEN SILK TASSELS (8)	SPAIN, 18TH CENTURY	11	
477	SET OF THREE SILK TASSELS (3)	SPAIN, 18TH CENTURY	10	
478	CARVED CHAIR	SPAIN, 17TH CENTURY	16	
479	SET OF SIX EMPIRE CHAIRS (6)	SPAIN, 18TH CENTURY	130	

872	50			
12	50	480	PAIR OF ANDIRONS (2)	SPAIN, 17TH CENTURY
14	50	481	PAIR OF ANDIRONS (2)	SPAIN, 17TH CENTURY
		482	PAIR OF ANDIRONS (2)	SPAIN, 17TH CENTURY
		483	PAIR OF ANDIRONS (2)	SPAIN, 17TH CENTURY
25		484	PAIR OF BRONZE ANDIRONS (2)	SPAIN, 17TH CENTURY
10		485	BRONZE MORTAR WITH STAR DECORATION	SPAIN, 16TH CENTURY
12		486	BRONZE MORTAR WITH MASCARON DECORATION	SPAIN, 16TH CENTURY
11		487	BRONZE MORTAR WITH FIGURAL DECORATION	SPAIN, 16TH CENTURY
11		488	BRONZE MORTAR WITH MASCARON DECORATION	SPAIN, 16TH CENTURY
12		489	BRONZE MORTAR	SPAIN, 16TH CENTURY
12		490	BRONZE MORTAR	SPAIN, 16TH CENTURY
13		491	BRONZE MORTAR WITH SHELL DECORATION	SPAIN, 16TH CENTURY
14		492	BRONZE MORTAR	SPAIN, 16TH CENTURY
150		493	PAIR OF SMALL RED DAMASK BENCHES (2)	SPAIN, 17TH CENTURY
180		494	SET OF EIGHT MOORISH STYLE CHAIRS (8)	SPAIN, 17TH CENTURY
		495	CARVED CHEST	SPAIN, 17TH CENTURY
75		496	CARVED CHEST	SPAIN, 17TH CENTURY

- 497 CARVED CHEST SPAIN, 17TH CENTURY
- 498 DOUBLE CARVED SHUTTERS WITH CARVED ROSETTES
SPAIN, 17TH CENTURY
- 499 SMALL SHUTTER WITH SQUARE SUNKEN PANELS
SPAIN, 17TH CENTURY
- 500 CARVED DOOR SPAIN, 17TH CENTURY
- 501 SET OF SILVER FILIGREE JEWELRY SPAIN, 18TH CENTURY
Consisting of bracelet, pair of earrings, necklace and two pins.
- 502 TWO ANTIQUE LEAD BUSTS
(2)
- 503 PAIR OF ANDIRONS SPAIN, 17TH CENTURY
(2)
- 504 SET OF FOUR CARVED AND GILT WOOD ALTAR
CANDLESTICKS SPAIN, 18TH CENTURY
(4)
- 505 ENGLISH MAHOGANY AND ORMOLU MANTEL CLOCK
LATE 18TH CENTURY
Made by John Taylor, London.
- 506 LARGE METAL ETERNAL LAMP SPAIN, 18TH CENTURY
Suspended by four chains. Four angel heads.
- 507 HISPANO-MORESQUE PLATTER 16TH CENTURY
- 508 LARGE HISPANO-MORESQUE LUSTRE PLATTER
SPAIN, 16TH CENTURY
- 509 LARGE HISPANO-MORESQUE LUSTRE PLATTER
SPAIN, 16TH CENTURY
- 510 PAINTING ON PANEL ITALIAN, 16TH CENTURY
Holy Family. Framed.
- 511 PORTRAIT OF A MAN SPAIN, LATE 18TH CENTURY
Attributed to Vicente Lopez. Canvas.
- 512 PAINTING ON CANVAS FRENCH, ABOUT 1810
Hunting Dog. Framed.

1427 50

70

45

12 50

125

40

4

17 50

70

60

17 50

40

37 50

50

35

2051 50

205150

513 PAINTING OF PANEL FLEMISH, 17TH CENTURY
Bear hunting. Framed.

514 STILL LIFE PAINTING ON PANEL FLEMISH, 17TH CENTURY

1250

515 STRIP OF FILET WORK SPAIN, 16TH CENTURY

2250

516 STRIP OF FILET WORK SPAIN, 16TH CENTURY

23

517 STRIP OF FILET WORK WITH SIREN DESIGN
SPAIN, 16TH CENTURY

1250

518 STRIP OF DRAWNWORK SPAIN, 17TH CENTURY

15

519 STRIP OF FILET WORK SPAIN, 17TH CENTURY

520 STRIPED BROCADE HANGING SPAIN, LATE 18TH CENTURY

521 STRIPED BROCADE HANGING SPAIN, LATE 18TH CENTURY

1750

522 STRIP OF BROCADE IN CAPE FORM SPAIN, 18TH CENTURY

20

523 PIECE OF STRIPED BROCADE SPAIN, 18TH CENTURY
Louis XVI pattern.

524 FRONTAL ALTAR PIECE SPAIN, 17TH CENTURY
Appliqué floral embroidery on white damask.

470

525 IMPORTANT GREEN DAMASK HANGING SPAIN, 17TH CENTURY
Richly embroidered in silk and gold. Diverse floral motives. In centre,
coat of arms of Catalonia.

240

526 IMPORTANT BROCADE HANGING SPAIN, LATE 16TH CENTURY
Centre with gold-embroidered strip. Coat of arms of a cardinal.

580

527 LARGE RED VELVET ECCLESIASTICAL HANGING SPAIN, 16TH CENTURY
In the centre, strip with saints in gold embroidery.

240

528 SET OF THREE SALMON-COLORED VELVET VESTMENTS SPAIN, 16TH CENTURY
Two dalmaticas, one chasuble.

48

529 FILET WORK TABLE SPREAD SPAIN, 17TH CENTURY

3744150

- 374450
- 45
- 4250
- 15
- 2750
- 45
- 2250
- 10
- 12
- 18
- 11
- 13
- 14
- 12
- 25
- 16
- 15
- 4198
- 530 FILET WORK TABLE SPREAD SPAIN, 17TH CENTURY
- 531 FILET WORK TABLE SPREAD *Azul* SPAIN, 17TH CENTURY
- 532 STRIP OF LINEN TRIMMED WITH FILET SPAIN, 18TH CENTURY
- 533 FILET AND LINEN COVERLET SPAIN, 18TH CENTURY
- 534 IMPORTANT FILET AND LINEN TABLE SPREAD
SPAIN, 18TH CENTURY
- 535 IMPORTANT DRAWNWORK AND FILET BEDSPREAD
SPAIN, 17TH CENTURY
- 536 LINEN TABLE COVER WITH FILET BORDER
SPAIN, 18TH CENTURY
- 537 DRAWNWORK TABLE COVER SPAIN, 17TH CENTURY
- 538 LITURGICAL BOOK WITH ENGRAVINGS
- 539 PRINTED BOOK SPAIN, 18TH CENTURY
Reproducing writing specimens of the saints.
- 540 BOOK WITH ENGRAVINGS SPAIN, 18TH CENTURY
The adventures of Telemachus.
- 541 BIBLE SPAIN, 18TH CENTURY
- 542 BIBLE WITH ENGRAVINGS 16TH CENTURY
- 543 MISSAL, HAND-WRITTEN ON VELLUM SPAIN, 16TH CENTURY
- 544 MISSAL, HAND-WRITTEN ON VELLUM SPAIN, 16TH CENTURY
- 545 MISSAL, HAND-WRITTEN ON VELLUM SPAIN, 16TH CENTURY
- 546 BOOK WITH ENGRAVINGS SPAIN, 16TH CENTURY
Relating to the Carthusian order.
- 547 MISSAL, HAND-WRITTEN ON VELLUM SPAIN, 16TH CENTURY
- 548 MISSAL, HAND-WRITTEN ON VELLUM SPAIN, 16TH CENTURY
- 549 ATLAS WITH MAPS AND HISTORY OF THE NORTH AND
SOUTH AMERICAN REPUBLICS

4118
26

550 16TH CENTURY ATLAS

551 GILT COPPER AND SILVER CHALICE SPAIN, 16TH CENTURY
Relief decoration. The base gilt copper, the bowl silver.

552 BOOK WITH ENGRAVED BINDING ENTITLED "CONTRA
GENTILES" 16TH CENTURY

12

553 BOOK BY THOMAS AQUINAS WITH TOOLED LEATHER
BINDING VENICE, 1549
Animal motives on binding.

11

554 LEATHER-BOUND BOOK, TREATISE ON MATRIMONY
SALAMANCA, 1692

12

555 LINEN TABLE COVER WITH BLUE EMBROIDERY
SPAIN, 17TH CENTURY

1075

556 IMPORTANT RELIGIOUS PAINTING SPAIN, 15TH CENTURY
Divided into five panels representing Our Saviour, St. Barbara, St. Anne,
St. Catherine, St. Marta. Rich carved and pierced gilt frame.

557 CARVED AND POLYCHROME WOODEN FIGURE OF
ST. MICHAEL SPAIN, LATE 15TH CENTURY

300

558 CARVED AND POLYCHROME WOODEN FIGURE
FLEMISH, 16TH CENTURY
Representing the Virgin.

35

559 PILLOW WITH GOLD EMBROIDERY SPAIN, 17TH CENTURY

15

560 PILLOW WITH BROCADE COVER SPAIN, 17TH CENTURY

561 LARGE WHITE DAMASK HANGING SPAIN, 17TH CENTURY

70

562 BLUE-GREEN DAMASK HANGING SPAIN, 18TH CENTURY

563 WHITE DAMASK BEDSPREAD WITH VALENCE
SPAIN, 17TH CENTURY

67 50

564 BLUE DAMASK SPREAD SPAIN, 17TH CENTURY

565 RED DAMASK SPREAD SPAIN, 17TH CENTURY

127 50

566 YELLOW DAMASK SPREAD SPAIN, 17TH CENTURY

5869

5869

70

105

Rasgado

- 567 RED DAMASK SPREAD SPAIN, 17TH CENTURY
- 568 YELLOW DAMASK SPREAD SPAIN, 17TH CENTURY
- 569 WALNUT AND LEATHER ARMCHAIR SPAIN, 17TH CENTURY
- 570 WALNUT AND LEATHER ARMCHAIR SPAIN, 17TH CENTURY
- 571 WALNUT AND LEATHER ARMCHAIR SPAIN, 17TH CENTURY
- 572 WALNUT AND LEATHER ARMCHAIR SPAIN, 17TH CENTURY
- 573 WALNUT AND LEATHER ARMCHAIR SPAIN, 17TH CENTURY
- 574 CARVED AND GILT WOOD ARMCHAIR
SPANISH, LATE 18TH CENTURY
Upholstered with yellow brocade.
- 575 SMALL WALNUT TABLE SPAIN, 17TH CENTURY
- 576 CARVED WALNUT CHEST SPAIN, 17TH CENTURY
Panelled and carved front.
- 577 CARVED WALNUT CHEST SPAIN, 17TH CENTURY
Panelled front and sides.
- 578 SMALL INDO-PORTUGUESE INLAID CABINET 17TH CENTURY
Partly ebony, richly inlaid.
- 579 CARVED BENCH SPAIN, 17TH CENTURY
- 580 WALNUT AND LEATHER ARMCHAIR SPAIN, 16TH CENTURY
- 581 RELIQUARY IN THE SHAPE OF THE BUST OF SAINT
(BISHOP) SPAIN, 16TH CENTURY
- 582 STATUE OF ST. ANNE WITH CHRIST AND VIRGIN
SPAIN, 13TH CENTURY
- 583 PAINTING ON PANEL, VIRGIN AND CHILD
SPAIN, 16TH CENTURY
Gilt frame.
- 584 PAINTING OF THE VIRGIN AND CHILD ITALIAN, 16TH CENTURY
School of Raphael. On panel.

100

115

180

245

525

60

70

70

6439

6739

585 WALNUT AND LEATHER ARMCHAIR SPAIN, 16TH CENTURY

100

586 WALNUT TABLE WITH ONE DRAWER SPAIN, 16TH CENTURY

29

587 LEATHER-BOUND BOOK OF PHYSIC BY ARISTOTLE
16TH CENTURY

(Incomplete)

90

588 WALNUT TABLE WITH TWO DRAWERS SPAIN, 16TH CENTURY

80

589 WALNUT AND LEATHER STOOL SPAIN, 17TH CENTURY

110

590 TWO STOOLS COVERED WITH 16TH CENTURY SILK AND
WOOL FABRIC SPAIN, 17TH CENTURY
(2)

591 SIX STOOLS COVERED WITH TOOLED LEATHER
SPAIN, 17TH CENTURY

(6)

180

592 LEATHER AND WALNUT FOLDING BENCH
SPAIN, 16TH CENTURY

593 LOUIS XVI WOOLEN KNOTTED RUG
FRENCH, LATE 18TH CENTURY

Floral design.

35

594 RED AND BLACK ALPUJARRAS RUG SPAIN, 17TH CENTURY

125

595 KNOTTED WOOLEN RUG SPAIN, 17TH CENTURY
Diamond pattern on red ground.

75

596 DOUBLE DOOR, ROCAILLE STYLE SPAIN, 18TH CENTURY

405

597 VARGUENO SPAIN, 16TH CENTURY
Decorated in ivory. Drop leaf with wrought-iron hinges.

598 CARVED DOOR SPAIN, 18TH CENTURY

60

599 CARVED TABLE SPAIN, 17TH CENTURY

600 LARGE CARVED TABLE SPAIN, 17TH CENTURY

[SEE ILLUSTRATION]

601 LARGE CARVED TABLE SPAIN, 17TH CENTURY

80281



LARGE SPANISH 17TH CENTURY CARVED TABLE
[NUMBER 600]

FOURTH SESSION

NUMBERS 602-808

4	602	DRAWNWORK TABLE COVER	SPAIN, 17TH CENTURY
	603	EMBROIDERED PILLOW CASE	SPAIN, 17TH CENTURY
4	604	EMBROIDERED PILLOW CASE	SPAIN, 17TH CENTURY
5	605	TALAVERA JAR	SPAIN, 17TH CENTURY
	606	TALAVERA JAR	SPAIN, 17TH CENTURY
6	607	PAIR OF TALAVERA JARS (2)	SPAIN, 17TH CENTURY
4	608	PAIR OF TALAVERA JARS (2)	SPAIN, 17TH CENTURY
10	609	PAIR OF TALAVERA JARS (2)	SPAIN, 17TH CENTURY
11	610	PAIR OF TALAVERA JARS (2)	SPAIN, 18TH CENTURY
5	611	BRONZE OIL LAMP	SPAIN, 18TH CENTURY
	612	BRONZE OIL LAMP	SPAIN, 18TH CENTURY
6	613	BRONZE OIL LAMP	SPAIN, 18TH CENTURY
	614	COLORED ENGRAVING OF A HORSE	SPAIN, 18TH CENTURY
4	615	PAINTING ON CANVAS, CHRIST AND VIRGIN	SPAIN, 17TH CENTURY
	616	PAINTING ON CANVAS <i>No parece</i> School of Maella.	SPAIN, 17TH CENTURY
12	617	EMBROIDERED PICTURE With representation of the suffering Christ.	SPAIN, 18TH CENTURY

- 618 BRONZE PLAQUE SPAIN, 17TH CENTURY
Representation of Mary Magdalene.
- 619 BRONZE PLAQUE SPAIN, 17TH CENTURY
With representation of the suffering Christ.
- 620 BRONZE PLAQUE SPAIN, 17TH CENTURY
With representation of the Holy Virgin.
- 621 BRONZE PLAQUE SPAIN, 17TH CENTURY
With representation of St. Jerome.
- 622 BRONZE PLAQUE SPAIN, 17TH CENTURY
With representation of St. Sebastian.
- 623 BRONZE PLAQUE SPAIN, 17TH CENTURY
With representation of the suffering Christ.
- 624 BRONZE PLAQUE SPAIN, 17TH CENTURY
With representation of Mary Magdalene.
- 625 BRONZE PLAQUE SPAIN, 17TH CENTURY
With representation of the Calvary.
- 626 BRONZE PLAQUE SPAIN, 16TH CENTURY
With representation of the Virgin and Child.
- 627 BRONZE PLAQUE SPAIN, 16TH CENTURY
With representation of the Virgin and Child.
- 628 HELMET FRENCH, 1812
From the period of the invasion of Spain by the French—the Peninsular War.
- 629 BLUE PLATE SPAIN, 17TH CENTURY
Decorated with female head.
- 630 BLUE PLATE SPAIN, 17TH CENTURY
Decorated with female head.
- 631 IVORY HAND-PAINTED MINIATURE OF A LADY SPAIN, 1810
- 632 BRONZE MORTAR SPAIN, 16TH CENTURY
- 633 LARGE RENAISSANCE BRONZE MORTAR SPAIN, 16TH CENTURY

41
3 50

5

3 50

3 50

3 50

3 50

3 50

7

9

7

120

634 PAINTING ON CANVAS SPAIN, 17TH CENTURY
Hunting scene. Carved and gilded frame.

635 LOUIS XVI PERIOD SALMON-COLORED SILK CAPE
SPAIN, 18TH CENTURY

31

636 STRIP OF DRAWNWORK EMBROIDERY SPAIN, 17TH CENTURY

13

637 STRIP OF DRAWNWORK EMBROIDERY SPAIN, 17TH CENTURY

15

638 STRIP OF EMBROIDERY SPAIN, 17TH CENTURY

639 EMBROIDERED TABLE COVER SPAIN, 17TH CENTURY

640 VENETIAN TABLE COVER SPAIN, 17TH CENTURY

641 PAINTING OF FERDINAND VII, KING OF SPAIN
SPAIN, 18TH CENTURY
Represented in the robe of Charles III.

642 EIGHT GOLD AND CREAM-COLORED TASSELS
SPAIN, 17TH CENTURY
(8)

6

643 EIGHT YELLOW AND GOLD TASSELS
SPAIN, 17TH CENTURY
(8)

644 EIGHT CREAM AND GOLD TASSELS
SPAIN, 17TH CENTURY
(8)

7

645 EIGHT YELLOW AND GOLD TASSELS
SPAIN, 17TH CENTURY
(8)

11

646 STRIP OF FILET LACE WITH BRANCH PATTERN
SPAIN, 17TH CENTURY

9

647 SMALL BRONZE RENAISSANCE-STYLE FRAME
SPAIN, 16TH CENTURY

648 SMALL TOOLED LEATHER COFFER SPAIN, 16TH CENTURY

90

649 FERAHAN WOOLEN RUG
SPAIN, 17TH CENTURY
Size, 5 yards x 1 yard

3

650 GREEN SATIN PANEL SPAIN, 16TH CENTURY

305

651	LOUIS XVI BROCADE MANIPLE, CHALICE COVER AND STOLA (3)	SPAIN, 18TH CENTURY	
652	STRIP OF FILET LACE	SPAIN, 18TH CENTURY	
653	STRIP OF EMBROIDERED DRAWNWORK	SPAIN, 17TH CENTURY	16
654	LINEN TABLE CLOTH	SPAIN, 17TH CENTURY	4
655	TWELVE CREAM AND GOLD TASSELS (12)	SPAIN, 17TH CENTURY	
656	TWELVE CREAM AND GOLD TASSELS (12)	SPAIN, 17TH CENTURY	
657	STRIP OF DRAWNWORK	SPAIN, 17TH CENTURY	12
658	STRIP OF DRAWNWORK AND LINEN	SPAIN, 17TH CENTURY	9
659	CHINTZ BED COVER Figural decoration.	SPAIN, 18TH CENTURY	13
660	RED DAMASK SPREAD	SPAIN, 17TH CENTURY	23
661	BRONZE MORTAR Decorated with bust of Charles V.	SPAIN, 16TH CENTURY	11
662	BRONZE MORTAR Decorated with mascarons.	SPAIN, 16TH CENTURY	19
663	BRONZE MORTAR	SPAIN, 16TH CENTURY	14
664	BRONZE MORTAR WITH MASCARONS	SPAIN, 16TH CENTURY	12
665	BRONZE MORTAR WITH FEMALE BUSTS	SPAIN, 16TH CENTURY	16
666	BRONZE MORTAR Decoration of busts.	SPAIN, 16TH CENTURY	10
667	BRONZE MORTAR	SPAIN, 16TH CENTURY	8
668	BRONZE MORTAR Decorated with busts.	SPAIN, 16TH CENTURY	9

481

15

669 PAIR OF LANTERNS SPAIN, 18TH CENTURY
(2)

20

670 PAIR OF LANTERNS SPAIN, 18TH CENTURY
(2)

16

671 PAIR OF LANTERNS SPAIN, 18TH CENTURY
(2)

20

672 LAMP SPAIN, 18TH CENTURY

20

673 PAIR OF LAMPS SPAIN, 18TH CENTURY
(2)

15

674 LAMP SPAIN, 18TH CENTURY

21

675 PAIR OF LAMPS SPAIN, 18TH CENTURY
(2)

65

676 PAIR OF LAMPS SPAIN, 18TH CENTURY
(2)

24

677 LAMP SPAIN, 18TH CENTURY

17 50

678 LAMP SPAIN, 18TH CENTURY

13

679 ENGRAVED DRINKING GLASS SPAIN, 18TH CENTURY

16

680 FOUR DRINKING GLASSES SPAIN, 18TH CENTURY
(4)

4

681 ENGRAVED DRINKING GLASS SPAIN, 18TH CENTURY

682 CUT GLASS TUMBLER ON STANDARD SPAIN, 18TH CENTURY

683 SILVER FLOWER VASE HOLDER WITH FIGURAL
DECORATION SPAIN, 18TH CENTURY
With crystal vase inset.

684 PAIR OF LARGE GLASS VASES SPAIN, 18TH CENTURY
With enamelled coat of arms. (2)

685 LARGE SATSUMA VASE WITH FIGURAL DECORATION

15

686 STRIP OF FILET LACE SPAIN, 17TH CENTURY
With decoration of figures and castles.

762 50

687	STRIP OF FILET LACE With decoration of horses.	SPAIN, 17TH CENTURY
688	STRIP OF FILET LACE	SPAIN, 17TH CENTURY
689	STRIP OF DRAWNWORK AND LINEN	SPAIN, 17TH CENTURY
690	STRIP OF DRAWNWORK	SPAIN, 17TH CENTURY
691	STRIP OF DRAWNWORK	SPAIN, 17TH CENTURY
692	STRIP OF DRAWNWORK	SPAIN, 17TH CENTURY
693	STRIP OF FILET LACE	SPAIN, 17TH CENTURY
694	STRIP OF FILET LACE	SPAIN, 17TH CENTURY
695	STRIP OF FILET LACE With pattern of horsemen.	SPAIN, 17TH CENTURY
696	STRIP OF FILET LACE	SPAIN, 17TH CENTURY
697	STRIP OF FILET LACE With pattern of horsemen.	SPAIN, 17TH CENTURY
698	STRIP OF FILET LACE Pattern of branches.	SPAIN, 17TH CENTURY
699	STRIP OF FILET LACE	SPAIN, 17TH CENTURY
700	STRIP OF FILET LACE	SPAIN, 16TH CENTURY
<i>No parecer</i> 701	FILET LACE TABLE COVER	SPAIN, 17TH CENTURY
702	FILET LACE TABLE COVER	SPAIN, 16TH CENTURY
703	EMBROIDERED TABLE COVER	SPAIN, 17TH CENTURY
704	FILET LACE TABLE COVER	SPAIN, 16TH CENTURY
705	FILET LACE STRIP	SPAIN, 17TH CENTURY
706	FILET LACE STRIP	SPAIN, 16TH CENTURY
707	FILET LACE STRIP	SPAIN, 16TH CENTURY
708	STRIP OF DRAWNWORK EMBROIDERY	SPAIN, 17TH CENTURY

762 50

25

22

10

25

25

27 50

25

27 50

20

21

25

35

45

26

15

20

1150 50

1150 50

8

13

22 50

30

20

22 50

17 50

27 50

95

55

32 50

1494

- 709 STRIP OF DRAWNWORK EMBROIDERY SPAIN, 17TH CENTURY
- 710 STRIP OF DRAWNWORK EMBROIDERY SPAIN, 17TH CENTURY
- 711 CHINTZ BED COVER SPAIN, 18TH CENTURY
- 712 CHINTZ BED COVER SPAIN, 18TH CENTURY
- 713 CHINTZ BED COVER SPAIN, 18TH CENTURY
- 714 CHINTZ BED COVER SPAIN, 18TH CENTURY
- 715 CHINTZ BED COVER SPAIN, 18TH CENTURY
- 716 CHINTZ BED COVER SPAIN, 18TH CENTURY
- 717 CHINTZ BED COVER SPAIN, 18TH CENTURY
- 718 CHINTZ BED COVER SPAIN, 18TH CENTURY
- 719 MANTLE FOR STATUE OF THE VIRGIN SPAIN, 18TH CENTURY
Louis XVI pattern.
- 720 MANTLE FOR STATUE OF THE VIRGIN SPAIN, 18TH CENTURY
Louis XVI pattern.
- 721 BROCADE SPREAD SPAIN, 16TH CENTURY
- 722 EMBROIDERED ALTAR FRONTAL SPAIN, 18TH CENTURY
- 723 SILK SPREAD SPAIN, 18TH CENTURY
- 724 YELLOW DAMASK SPREAD SPAIN, 17TH CENTURY
- 725 VIOLET DAMASK MANTLE AND DRAPERY FOR STATUE OF THE VIRGIN SPAIN, 17TH CENTURY
- 726 RED DAMASK SPREAD SPAIN, 16TH CENTURY
- 727 RED DAMASK SPREAD SPAIN, 17TH CENTURY
- 728 EMBROIDERED RED VELVET PROCESSIONAL GOWN SPAIN, 17TH CENTURY
- 729 LOUIS XVI PINK STRIPED SILK BED COVER SPAIN, 18TH CENTURY

- 1494
- 730 STRIP OF LACE WITH BRANCH MOTIVES
SPAIN, 17TH CENTURY
- 731 RED SATIN BED COVER WITH GREEN FRINGE AND
TASSELS
SPAIN, 17TH CENTURY
- 732 TWO PAINTINGS ON CANVAS REPRESENTING COUNTRY
SCENES
(2)
SPAIN, 18TH CENTURY
- 733 SMALL GILDED IRON GRATING
With two padlocks.
SPAIN, 16TH CENTURY
- 734 MODERN GILT LANTERN, ANTIQUE STYLE
- 735 RENAISSANCE LANTERN *and bracket*
SPAIN, 16TH CENTURY
- 736 TWO LOUIS XVI LANTERNS WITH LONG STAFFS
(2)
SPAIN, 18TH CENTURY
- 737 PAINTING ON PANEL
The kiss of Judas. Carved and gilded frame.
SPAIN, 16TH CENTURY
- 738 PAINTING ON PANEL
The Martyrdom of St. Catherine.
SPAIN, 16TH CENTURY
- 739 PAINTING ON PANEL
Representing Jesus in the Street of Bitterness.
SPAIN, 16TH CENTURY
- 740 PAINTING ON PANEL
Jesus Praying in the Garden of Gethsemane.
SPAIN, 16TH CENTURY
- 741 PAINTING ON PANEL
St. Peter seated, angels playing musical instruments in the background.
Gilded frame.
SPAIN, 15TH CENTURY
- 742 PAINTING ON PANEL
Representing St. Sebastian. Carved and pierced gilt frame.
SPAIN, LATE 15TH CENTURY
- 743 TILE FIELD
SPAIN, 16TH CENTURY
- 744 TILE FIELD
SPAIN, 16TH CENTURY
- 745 TILE FIELD
SPAIN, 16TH CENTURY

32.50

60

52.50

42.50

92.50

130

610

16

17

13

2560

15

746 TILE FIELD SPAIN, 16TH CENTURY

747 ARABIC TILE FIELD SPAIN, 14TH CENTURY

19

748 TILE FIELD SPAIN, 16TH CENTURY

21

749 TILE FIELD SPAIN, 16TH CENTURY

17

750 TILE FIELD SPAIN, 16TH CENTURY

37 50

751 ARABIC TILE FIELD SPAIN, 14TH CENTURY

19

752 TILE FIELD SPAIN, 16TH CENTURY

22

753 ARABIC TILE FIELD SPAIN, 14TH CENTURY

10

754 TILE FIELD SPAIN, 16TH CENTURY

17

755 TILE FIELD SPAIN, 16TH CENTURY

15

756 RENAISSANCE PANEL OF ENAMELLED AZULEJOS RELIEF TILES SPAIN, 16TH CENTURY

21

757 RENAISSANCE PANEL OF ENAMELLED AZULEJOS RELIEF TILES SPAIN, 16TH CENTURY

20

758 RENAISSANCE PANEL OF ENAMELLED AZULEJOS RELIEF TILES SPAIN, 16TH CENTURY

31

759 RENAISSANCE PANEL OF ENAMELLED AZULEJOS RELIEF TILES SPAIN, 16TH CENTURY

27

760 RENAISSANCE PANEL OF ENAMELLED AZULEJOS RELIEF TILES SPAIN, 16TH CENTURY

12

761 BRONZE MORTAR WITH MASCARON DECORATION SPAIN, 16TH CENTURY

13

762 BRONZE MORTAR SPAIN, 16TH CENTURY

20

763 BRONZE MORTAR WITH MASCARON DECORATION SPAIN, 16TH CENTURY

15

764 BRONZE MORTAR SPAIN, 16TH CENTURY
Decoration of coat of arms.

2991 50

765	BRONZE MORTAR	SPAIN, 16TH CENTURY	19
766	BRONZE MORTAR With decoration of inscription.	SPAIN, 16TH CENTURY	21
767	BRONZE MORTAR	SPAIN, 16TH CENTURY	17
768	STRIP OF FILET LACE With pattern of figures and horses.	SPAIN, 16TH CENTURY	18
769	STRIP OF FILET LACE	SPAIN, 16TH CENTURY	22
770	STRIP OF FILET LACE	SPAIN, 16TH CENTURY	19
771	STRIP OF FILET LACE	SPAIN, 17TH CENTURY	28
772	STRIP OF FILET LACE With pattern of horsemen.	SPAIN, 17TH CENTURY	27
773	STRIP OF FILET LACE	SPAIN, 17TH CENTURY	14
774	STRIP OF FILET LACE	SPAIN, 17TH CENTURY	24
775	STRIP OF FILET LACE With pattern of lion motives.	SPAIN, 17TH CENTURY	21
776	DRAWNWORK SPREAD	SPAIN, 17TH CENTURY	41
777	STRIP OF FILET LACE	SPAIN, 17TH CENTURY	20
778	STRIP OF FILET LACE	SPAIN, 17TH CENTURY	27
779	STRIP OF FILET LACE	SPAIN, 16TH CENTURY	
780	STRIP OF FILET LACE	SPAIN, 16TH CENTURY	22
781	STRIP OF FILET LACE With pattern of castles and lions.	SPAIN, 17TH CENTURY	24
782	STRIP OF FILET LACE With figures and animal motives.	SPAIN, 17TH CENTURY	
783	STRIP OF FILET LACE	SPAIN, 17TH CENTURY	21
784	FILET LACE TABLE COVER	SPAIN, 17TH CENTURY	26

291150

19

21

17

18

22

19

28

27

14

24

21

41

20

27

22

24

21

26

3325150

3325 50

11

785 EMBROIDERED TABLE COVER SPAIN, 16TH CENTURY

20

786 EMBROIDERED TABLE COVER SPAIN, 16TH CENTURY

8

787 MARBLE MASK SPAIN, 15TH CENTURY

25

788 STONE FIGURE OF A SAINT FROM A CHAPEL
SPAIN, 16TH CENTURY

789 STONE BUST OF THE GOD BACCHUS SPAIN, 16TH CENTURY

17 50

790 PIECE OF LOUIS XVI COLORED BROCADE
SPAIN, 18TH CENTURY

8

791 SIX PIECES OF MODERN TEXTILES
Louis XVI patterns. (6)

792 STRIP OF VERY FINE VENETIAN LACE
VENICE, ITALY, 17TH CENTURY
Length about three yards

793 GOLD AND POLYCHROME BROCADE BED COVER
SPAIN, 18TH CENTURY
Louis XV pattern.

794 GOLD AND POLYCHROME BROCADE BED COVER
SPAIN, 18TH CENTURY

610

795 RENAISSANCE IVORY INLAID VARGUENO
SPAIN, 16TH CENTURY
With secret drawers and decoration of columns. Wrought-iron ornaments.

90

796 RED DAMASK ARMCHAIR SPAIN, 17TH CENTURY
With embroidered figure of saint on back.

125

797 FOUR LOUIS XIV RED DAMASK COVERED CHAIRS
SPAIN, 17TH CENTURY
(4)

30

798 LOUIS XVI ARMCHAIR SPAIN, 18TH CENTURY

799 CARVED ARMCHAIR IN MOORISH STYLE SPAIN, 16TH CENTURY

40

800 STONE BUST REPRESENTING THE GODDESS CERES
SPAIN, 16TH CENTURY

4310

- 801 GOTHIC CARVING REPRESENTING ST. MICHAEL *Marota*
 SPAIN, 15TH CENTURY
- 802 LEATHER TRUNK WITH IRON ORNAMENTS
 SPAIN, 16TH CENTURY
- 803 PAIR OF LARGE CARVED AND GILDED RENAISSANCE
 CANDLESTICKS
 (2) SPAIN, 16TH CENTURY
- 804 RICHLY CARVED RENAISSANCE TABLE SPAIN, 16TH CENTURY
 The top in one piece.
- 805 RENAISSANCE VARGUENO WITH IVORY INCRUSTATIONS
 SPAIN, 16TH CENTURY
 Two columns. Iron ornaments and secret drawers.
- 806 RENAISSANCE VARGUENO WITH IVORY INCRUSTATIONS
 SPAIN, 16TH CENTURY
 Two columns. Iron ornaments and secret drawers.
- 807 CARVED CHEST SPAIN, 17TH CENTURY
- 808 ARMCHAIR WITH EMBROIDERED BACK SPAIN, 16TH CENTURY

4310

310

40

180

275

850

685

55

85

6790

FIFTH SESSION

NUMBERS 809-1033

809 LOUIS XIV-~~STYLE FAN~~ *soufa rojo* SPAIN, 17TH CENTURY

810 BRASS ALTAR CANDLESTICK SPAIN, 17TH CENTURY

811 WROUGHT-IRON CANDLE BRACKET SPAIN, 16TH CENTURY

27 50 812 TILE FIELD WITH DECORATION OF COATS OF ARMS
SPAIN, 16TH CENTURY

30 813 LUSTRE JAR SPAIN, 16TH CENTURY
Decoration of deer, showing Moorish influence.

814 NUESTRA SEÑORA DEL ROSARIO SPAIN, 16TH CENTURY
The Holy Virgin of the Rosary, embroidery on vellum.

25 815 ST. MAGDALENE. EMBROIDERY ON VELLUM
SPAIN, 16TH CENTURY

816 CARVED AND GILT MIRROR SPAIN, 18TH CENTURY
Cartouche-shaped scrolled design.

817 WROUGHT SILVER TRAY SPAIN, 17TH CENTURY

62 50 818 IVORY FIGURE OF THE VIRGIN SPAIN, 17TH CENTURY

75 819 CARVED AND GILT MIRROR SPAIN, 18TH CENTURY
Cartouche-shaped scrolled design. Antique Venetian glass panel.

820 WROUGHT SILVER-GILT CHALICE SPAIN, 16TH CENTURY

12 50 821 FIELD OF ENAMELLED TILES SPAIN, 16TH CENTURY

822 FIELD OF ENAMELLED RENAISSANCE TILES
SPAIN, 16TH CENTURY
Decoration of busts of Roman emperors.

12 50 823 FIELD OF ENAMELLED TILES SPAIN, 16TH CENTURY

20 824 FIELD OF ENAMELLED TILES SPAIN, 16TH CENTURY

825	FIELD OF TILES	SPAIN, 16TH CENTURY	265
826	FIELD OF TILES	SPAIN, 16TH CENTURY	17 50
827	CARVED AND POLYCHROME RELIEF Representing the Nativity.	SPAIN, 16TH CENTURY	20
828	ALABASTER RELIEF Decorated in gilt with representation of the Nativity.	SPAIN, 16TH CENTURY	15
829	WROUGHT-IRON CROSS	SPAIN, 16TH CENTURY	9
830	WROUGHT-IRON TOP PIECE OF A GRATING	SPAIN, 16TH CENTURY	
831	IRON WALL BRACKET WITH HANGING LANTERN	SPAIN, 17TH CENTURY	25
832	WROUGHT-IRON WALL BRACKET WITH HANGING LANTERN	SPAIN, 17TH CENTURY	50
833	IRON WALL BRACKET WITH HANGING LANTERN	SPAIN, 17TH CENTURY	27 50
834	IRON WALL BRACKET WITH HANGING LANTERN	SPAIN, 17TH CENTURY	47 50
835	IRON WALL BRACKET WITH HANGING LANTERN	SPAIN, 16TH CENTURY	70
836	EMBROIDERED DRAWNWORK TABLE COVER	SPAIN, 17TH CENTURY	13
837	EMBROIDERED DRAWNWORK TABLE COVER	SPAIN, 18TH CENTURY	11
838	FILET LACE TABLE COVER	SPAIN, 18TH CENTURY	22
839	TABLE COVER WITH COLORED EMBROIDERY	SPAIN, 17TH CENTURY	18
840	DRAWNWORK TABLE COVER	SPAIN, 17TH CENTURY	13
841	DRAWNWORK STRIP	SPAIN, 17TH CENTURY	10
842	STRIP OF FILET LACE	SPAIN, 17TH CENTURY	25

658	50	843	GREEN DAMASK ALTAR FRONTAL	SPAIN, 16TH CENTURY
22	50	844	SALMON-COLORED DALMATICA Trimmed with fine gold and silver galloon.	SPAIN, 18TH CENTURY
27	50	845	SALMON-COLORED CHASUBLE	SPAIN, 18TH CENTURY
32	50	846	PIECE OF YELLOW BROCADE	SPAIN, 18TH CENTURY
19		847	PIECE OF GREEN BROCADE	SPAIN, 17TH CENTURY
15		848	PIECE OF STRIPED BROCADE	SPAIN, 18TH CENTURY
20		849	BLACK VELVET DRAPERY FOR FIGURE OF THE VIRGIN	SPAIN, 18TH CENTURY
25		850	SALMON-COLORED CHASUBLE	SPAIN, 17TH CENTURY
25		851	STRIP OF DRAWNWORK	SPAIN, 17TH CENTURY
20		852	STRIP OF DRAWNWORK	SPAIN, 17TH CENTURY
10		853	STRIP OF DRAWNWORK	SPAIN, 17TH CENTURY
20		854	STRIP OF DRAWNWORK	SPAIN, 17TH CENTURY
20		855	STRIP OF DRAWNWORK	SPAIN, 17TH CENTURY
17	50	856	STRIP OF DRAWNWORK	SPAIN, 17TH CENTURY
21		857	STRIP OF FILET LACE	SPAIN, 17TH CENTURY
16		858	STRIP OF FILET LACE Figural design.	SPAIN, 17TH CENTURY
22	50	859	FILET LACE TABLE COVER	SPAIN, 17TH CENTURY
20		860	SILK TABLE COVER TRIMMED WITH LACE	SPAIN, 18TH CENTURY
45		861	CARVED TABLE	SPAIN, 17TH CENTURY
62		862	TABLE WITH TORTOISE-SHELL INCRUSTATIONS	SPAIN, 17TH CENTURY

- 1139
52.50
- 863 WALNUT "FRAILERO" CHAIR WITH LEATHER SEAT
AND BACK SPAIN, 17TH CENTURY
- 864 CARVED AND GILT CHAIR WITH CANED SEAT AND BACK
SPAIN, 18TH CENTURY
- 865 SET OF SIX HEPPLEWHITE-STYLE CHAIRS
SPAIN, ABOUT 1790
Shield-shaped backs. Made of very heavy lignum vitae. (6)
- 866 WALNUT BENCH SPAIN, 17TH CENTURY
The back with gilt metal coat of arms. 97.50
- 867 BENCH UPHOLSTERED IN RED VELVET SPAIN, 17TH CENTURY
- 868 LONG CARVED WALNUT BENCH SPAIN, 17TH CENTURY 110
- 869 LONG CARVED WALNUT BENCH SPAIN, 17TH CENTURY 180
- 870 EMBROIDERED TABLE COVER SPAIN, 17TH CENTURY 14.50
- 871 TABLE COVER *No parcel* SPAIN, 17TH CENTURY
- 872 TABLE COVER WITH APPLIQUE DECORATION
SPAIN, 18TH CENTURY 31
- 873 LINEN TABLECLOTH WITH LACE DECORATION
SPAIN, 17TH CENTURY 22.50
- 874 CHINTZ SPREAD WITH CHINOISERIE DESIGN
SPAIN, 18TH CENTURY
- 875 CHINTZ SPREAD WITH CHINOISERIE DESIGN
SPAIN, 18TH CENTURY
- 876 GENTLEMAN'S EMBROIDERED COAT SPAIN, 18TH CENTURY
- 877 CHINTZ SPREAD WITH CHINOISERIE DESIGN
SPAIN, 18TH CENTURY 34
- 878 EMBROIDERED TABLE SPREAD SPAIN, 17TH CENTURY 14.50
- 879 FILET-WORK SPREAD SPAIN, 17TH CENTURY 52.50
- 880 EMBROIDERED SPREAD SPAIN, 16TH CENTURY 85

1792

20

40

40

40

17 50

22 50

20

25

65

125

90

47 50

30

15

12 50

11

10

32 50

2455 50

- 881 STRIP OF FILET WORK SPAIN, 17TH CENTURY
- 882 DRAWNWORK SPREAD SPAIN, 17TH CENTURY
- 883 STRIP OF FILET WORK SPAIN, 17TH CENTURY
 Decoration of horsemen.
- 884 STRIP OF DRAWNWORK SPAIN, 17TH CENTURY
- 885 STRIP OF DRAWNWORK SPAIN, 17TH CENTURY
- 886 STRIP OF DRAWNWORK SPAIN, 17TH CENTURY
- 887 STRIP OF FILET WORK SPAIN, 17TH CENTURY
 Decoration of lions.
- 888 STRIP OF FILET WORK SPAIN, 17TH CENTURY
 Heraldic decoration of lions and castles.
- 889 EMBROIDERED SALAMANCA SPREAD SPAIN, 17TH CENTURY
 Charming design of peasants.
- 890 LOUIS XIII-STYLE YELLOW DAMASK SPREAD SPAIN, 17TH CENTURY
- 891 RED DAMASK SPREAD WITH APPLIQUE DECORATION SPAIN, 16TH CENTURY
- 892 LOUIS XIV-STYLE COPE SPAIN, 17TH CENTURY
- 893 LOUIS XV-STYLE BROCADE COPE SPAIN, 18TH CENTURY
- 894 BROCADE CHASUBLE SPAIN, 17TH CENTURY
 Pattern of architectonic motives. A collector's piece.
- 895 TABLE SPREAD WITH FILET WORK SPAIN, 17TH CENTURY
- 896 SILK-EMBROIDERED TABLE SPREAD SPAIN, 17TH CENTURY
- 897 SILK-EMBROIDERED TABLE SPREAD SPAIN, 17TH CENTURY
- 898 EMBROIDERED TABLE SPREAD SPAIN, 17TH CENTURY
- 899 EMBROIDERED TABLE SPREAD SPAIN, 17TH CENTURY
- 900 STRIP OF FILET WORK SPAIN, 18TH CENTURY

901	STRIP OF FILET WORK With heraldic decoration of lions and castles.	SPAIN, 17TH CENTURY	225550 25
902	STRIP OF FILET WORK	SPAIN, 17TH CENTURY	1250
903	STRIP OF DRAWNWORK	SPAIN, 17TH CENTURY	20
904	STRIP OF DRAWNWORK	SPAIN, 17TH CENTURY	1250
905	HAND-WROUGHT SILVERED AND GILDED LAMP Renaissance type. Relief work. Chains with castles and lions. Tassels.	SPAIN, 16TH CENTURY	
906	PAIR OF LANTERNS (2)	SPAIN, 17TH CENTURY	5250
907	PAIR OF LANTERNS (2)	SPAIN, 17TH CENTURY	45
908	PAIR OF LANTERNS (2)	SPAIN, 17TH CENTURY	35
909	LANTERN	SPAIN, 17TH CENTURY	3750
910	LAMP ON IRON BRACKET	SPAIN, 17TH CENTURY	5750
911	TABLE SPREAD WITH FILET WORK	SPAIN, 17TH CENTURY	
912	EMBROIDERED TABLECLOTH ADORNED WITH VENETIAN LACE	SPAIN, 16TH CENTURY	
913	FILET WORK WITH FIGURAL DESIGN	SPAIN, 16TH CENTURY	
914	STRIP OF DRAWNWORK <i>lace</i>	SPAIN, 17TH CENTURY	25
915	LINEN STRIP WITH POLYCHROME EMBROIDERY	SPAIN, 17TH CENTURY	1250
916	LINEN STRIP WITH POLYCHROME EMBROIDERY	SPAIN, 17TH CENTURY	1750
917	STRIP OF FILET LACE	SPAIN, 17TH CENTURY	20
918	BROCADE SPREAD	SPAIN, 17TH CENTURY	1250
919	BROCADE SPREAD	SPAIN, 18TH CENTURY	15

2855 50

Barga

920 SILK BROCADE ANTEPENDIUM SPAIN, 17TH CENTURY

921 ANTEPENDIUM EMBROIDERED ON CREAM SATIN GROUND
SPAIN, 17TH CENTURY

60

922 RED DAMASK ANTEPENDIUM SPAIN, 16TH CENTURY

923 RED DAMASK ANTEPENDIUM SPAIN, 16TH CENTURY

54 50

924 CHINTZ SPREAD WITH TIGER DESIGN SPAIN, 18TH CENTURY

925 CHINTZ SPREAD SPAIN, 18TH CENTURY

70

926 LAMP ON IRON BRACKET SPAIN, 17TH CENTURY

944 The bracket pierced in openwork Moorish style.

20

927 CARVED CHAIR SPAIN, 17TH CENTURY

17 50

928 CARVED CHAIR SPAIN, 17TH CENTURY

12 50

929 CARVED CHAIR SPAIN, 17TH CENTURY

30

930 PAIR OF CARVED CHAIRS
(2) SPAIN, 17TH CENTURY

70

931 CARVED WALNUT TABLE SPAIN, 17TH CENTURY

932 CARVED WALNUT TABLE SPAIN, 17TH CENTURY

40

933 CARVED WALNUT TABLE SPAIN, 17TH CENTURY
Supported by lyre-shaped brackets.

42 50

934 CARVED WALNUT TABLE SPAIN, 17TH CENTURY
Supported by lyre-shaped brackets.

935 PAIR OF ANDIRONS
(2) SPAIN, 17TH CENTURY

30

936 PAIR OF ANDIRONS
(2) SPAIN, 17TH CENTURY

35

937 PAIR OF ANDIRONS
(2) SPAIN, 17TH CENTURY

20

938 PAIR OF ANDIRONS
(2) SPAIN, 17TH CENTURY

3360 50



SPANISH 18TH CENTURY LACQUER ESCRITTOIRE
[NUMBER 952]

3860 50

42 50

939 LEATHER-UPHOLSTERED "FRAILERO" ARMCHAIR
SPAIN, 17TH CENTURY

Rasgado

55

940 ARMCHAIR UPHOLSTERED IN SILK
SPAIN, 17TH CENTURY

50

941 UPHOLSTERED ARMCHAIR
SPAIN, 17TH CENTURY

50

942 "FRAILERO" CHAIR
Leather back, and seat with cushion.
SPAIN, 17TH CENTURY

62 50

943 PAIR OF LOUIS XIV RED DAMASK SIDE CHAIRS
(2)
SPAIN, 17TH CENTURY

35

27 50

944 RED DAMASK LOUIS XIV SIDE CHAIR
SPAIN, 17TH CENTURY

944 A " " " " " "

945 PAIR OF RED DAMASK LOUIS XIV SIDE CHAIRS
(2)
SPAIN, 17TH CENTURY

54 50

946 LOUIS XIII ARMCHAIR
Upholstered in red damask.
SPAIN, 17TH CENTURY

80

947 LOUIS XV ARMCHAIR *Rota verde*
Upholstered in green damask.
SPAIN, 18TH CENTURY

90

948 LOUIS XVI ARMCHAIR *Rota verde*
SPAIN, 16TH CENTURY

135

949 CARVED BENCH
SPAIN, 17TH CENTURY

300

950 SET OF SIX LACQUERED CHAIRS
(6)
FRENCH, 18TH CENTURY

180

951 LACQUERED SCREEN
FRENCH, 18TH CENTURY

280

952 LACQUER ESCRITOIRE
SPAIN, 18TH CENTURY

[SEE ILLUSTRATION, PAGE 59]

20

953 SILK TABLE COVER
SPAIN, 18TH CENTURY

12 50

954 CHINTZ BED COVER
Figural and bird decoration.
SPAIN, 18TH CENTURY

15

955 CHINTZ BED COVER
Decorated with classic figures.
SPAIN, 18TH CENTURY

25

956 CHINTZ BED COVER
Decorated with figures of children.
SPAIN, 18TH CENTURY

4878

957	CHINTZ BED COVER Decorated with figures of children.	SPAIN, 18TH CENTURY	4878 25
958	CHINTZ BED COVER Decorated with sprays of leaves.	SPAIN, 18TH CENTURY	12 50
959	PAIR OF SILK BROCADE DALMATICAS (2)	SPAIN, 17TH CENTURY	80
960	PAIR OF RED DAMASK AND VELVET DALMATICAS (2)	SPAIN, 17TH CENTURY	35
961	PURPLE DAMASK DALMATICA	SPAIN, 17TH CENTURY	37 50
962	BROCADE STRIP	SPAIN, 17TH CENTURY	25
963	RED VELVET MANTLE <i>green</i>	SPAIN, 17TH CENTURY	27 50
964	RED DAMASK SPREAD	SPAIN, 17TH CENTURY	77 50
965	COLORED SILK SPREAD	SPAIN, 17TH CENTURY	37 50
966	FINE LACE-TRIMMED TABLECLOTH	SPAIN, 17TH CENTURY	
967	STRIP OF DRAWNWORK	SPAIN, 17TH CENTURY	12 50
968	TABLE COVER OF FINE LACE	SPAIN, 17TH CENTURY	25
969	WHITE EMBROIDERED SHAWL OR MANTON DE MANILA SPAIN, 18TH CENTURY.		150
970	YELLOW EMBROIDERED SHAWL OR MANTON DE MANILA SPAIN, 18TH CENTURY		80
971	EMBROIDERED SHAWL OR MANTON DE MANILA SPAIN, 18TH CENTURY		60
972	EMBROIDERED SHAWL OR MANTON DE MANILA SPAIN, 18TH CENTURY		50
973	YELLOW EMBROIDERED MANTON DE MANILA SPAIN, 18TH CENTURY		90
974	RELIGIOUS CARVING IN WOOD Representing the suffering Christ.	SPAIN, 17TH CENTURY	

5703
180

975 PORTABLE ALTAR SPAIN, 17TH CENTURY
With sculpture of St. Michael, the sides with portraits of donors.

27 50

976 TILE FIELD SPAIN, 16TH CENTURY

15

977 BRONZE MORTAR SPAIN, 16TH CENTURY
With decoration of inscription.

978 GILT AND POLYCHROME BAS RELIEF SPAIN, 16TH CENTURY
Representing the burial of Christ.

50

979 CARVED BUST OF A SAINT SPAIN, 16TH CENTURY
In the costume of a bishop.

180

980 TRIPTYCH SPAIN, 16TH CENTURY
Adoration in the centre, on the wings the Annunciation.

75

981 PAINTING ON PANEL FLEMISH SCHOOL, 16TH CENTURY
Virgin and Child.

105

982 PAINTING ON PANEL ITALIAN SCHOOL, 17TH CENTURY
Virgin and Child. Carved frame with coat of arms.

983 GILT AND POLYCHROME BAS RELIEF SPAIN, 16TH CENTURY
Representing the Flagellation of Christ.

984 CARVED NICHE WITH STATUE OF THE VIRGIN SPAIN, 14TH CENTURY
Polychrome wood. With base.

985 CARVED NICHE WITH STATUE OF A SAINT SPAIN, 16TH CENTURY

22 50

986 SILK ~~DALMATICA~~ *chasuble* SPAIN, 18TH CENTURY

23

987 STRIP OF FILET LACE SPAIN, 17TH CENTURY

20

988 STRIP OF FILET LACE SPAIN, 17TH CENTURY

37 50

989 SALMON-COLORED BROCADE ALTAR FRONTAL SPAIN, 17TH CENTURY

990 BLUE DAMASK SPREAD SPAIN, 17TH CENTURY

991 FILET LACE TABLE COVER SPAIN, 17TH CENTURY

6438150

- 992 BLUE DAMASK SPREAD SPAIN, 17TH CENTURY
- 993 EMBROIDERED SALAMANCA SPREAD SPAIN, 18TH CENTURY
- 994 LOUIS XIV SILK BROCADE ALTAR FRONTAL
SPAIN, 17TH CENTURY
- 995 GREEN SILK BROCADE SPREAD *Luciano* SPAIN, 17TH CENTURY
- 996 EMBROIDERED SPREAD SPAIN, 18TH CENTURY
- 997 BROCADE COPE WITH HOOD SPAIN, 17TH CENTURY
- 998 BROCADE MANTLE OF A CHEVALIER OF THE ORDER OF
CHARLES III SPAIN, 18TH CENTURY
With coat of arms.
- 999 EMBROIDERED ALTAR FRONTAL SPAIN, 17TH CENTURY
- 1000 RED VELVET CHASUBLE WITH EMBROIDERED STRIP *Catalana* SPAIN, 16TH CENTURY
- 1001 YELLOW VELVET CHASUBLE WITH EMBROIDERED STRIP *Galindo* SPAIN, 16TH CENTURY
- 1002 RED VELVET CHASUBLE WITH EMBROIDERED STRIP
SPAIN, 17TH CENTURY
- 1003 GOTHIC WROUGHT-IRON PULPIT SPAIN, 15TH CENTURY
Representing an eagle. Hand-wrought; foot with claws of pierced iron.
- 1004 LOUIS XIV RED DAMASK COVERED SIDE CHAIR
SPAIN, 17TH CENTURY
- 1005 LOUIS XIV RED DAMASK COVERED CHAIR
SPAIN, 17TH CENTURY
- 1006 THREE LOUIS XVI ARMCHAIRS *agustin* SPAIN, 18TH CENTURY
(3)
- 1007 LOUIS XVI ARMCHAIR SPAIN, 18TH CENTURY
- 1008 PAIR OF LOUIS XVI ~~ARM~~CHAIRS SPAIN, 18TH CENTURY
(2)

6438 50

30

62 50

175

80

42 50

27 50

205

50

7171

4111
4089

1009 141 YARDS OF RED VELVET IN 26 PIECES
SPAIN, 17TH CENTURY
From the parish of St. Michael of Valladolid.

1010 PETIT-POINT TAPESTRY
SPAIN, 18TH CENTURY
Louis XVI period. Representing a subject from Don Quixote.
Size about 2 1/2 x 3 1/4 yards

1011 PETIT-POINT TAPESTRY
SPAIN, 18TH CENTURY
Representing subjects from Don Quixote—the Wedding of Gamacho.
Size about 2 1/2 x 3 1/4 yards

265

1012 ROMANESQUE CAPITAL
SPAIN, 12TH CENTURY
With decoration of angels and birds. From the Cathedral of Jaca.

275

1013 PAIR OF RED DAMASK ARMCHAIRS WITH EMBROIDERED
BACK
SPAIN, 17TH CENTURY
(2)

1014 GOTHIC WALNUT CHOIR CHAIR
SPAIN, 15TH CENTURY
Three seats with red damask cushions, and trimmed with gold braid
and tassels. Very important specimen.

1015 CARVED DOUBLE DOOR
SPAIN, 18TH CENTURY
[SEE ILLUSTRATION]

1016 CARVED TABLE
SPAIN, 17TH CENTURY

1017 CREDENCE WITH FINE CARVED DECORATION
SPAIN, 17TH CENTURY

175

1018 CARVED WALNUT CHEST *comedor*
SPAIN, 17TH CENTURY
Lined with red damask, standing on detachable base.

65

1019 DOUBLE DOOR WITH SQUARE SUNKEN PANELS
SPAIN, 17TH CENTURY

70

1020 DOOR WITH SQUARE PANELLING
SPAIN, 16TH CENTURY

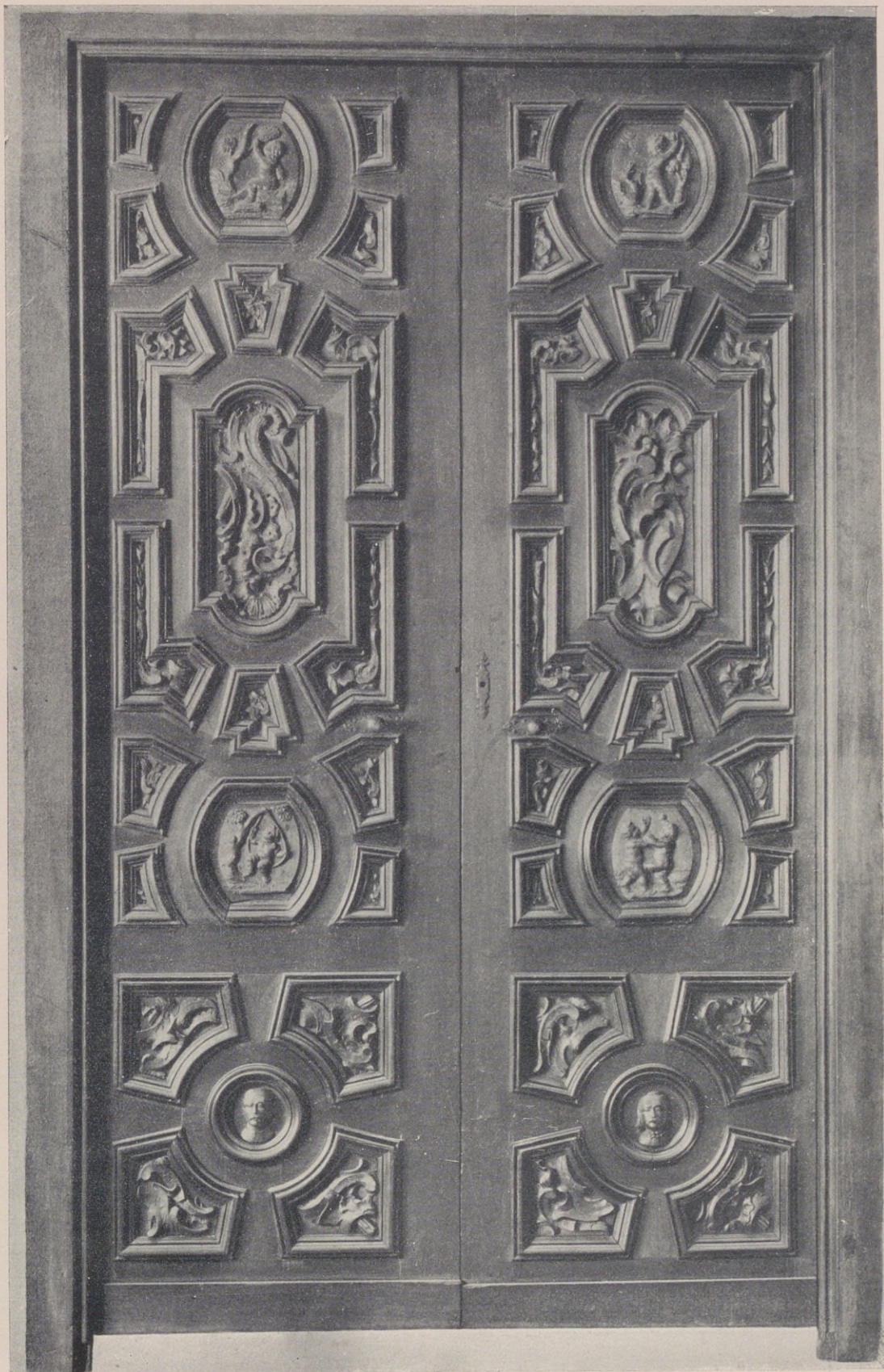
120

1021 LARGE REFECTORY TABLE
SPAIN, 17TH CENTURY

1022 PAIR OF WOODEN SHUTTERS WITH FINE CARVING
(2)
SPAIN, 17TH CENTURY

1023 LARGE CARVED TABLE
SPAIN, 17TH CENTURY

12170



SPANISH 18TH CENTURY CARVED DOUBLE DOOR
[NUMBER 1015]

12170
390

1024 LARGE CARVED TABLE SPAIN, 17TH CENTURY

1025 GOTHIC WALNUT CHOIR STALL SPAIN, 15TH CENTURY
Three seats with red damask cushions, trimmed with gold braid and tassels.

1026 EMBROIDERED RED VELVET ARMCHAIR SPAIN, 16TH CENTURY
[SEE ILLUSTRATION]

185

1027 EMBROIDERED RED VELVET ARMCHAIR SPAIN, 16TH CENTURY
[SEE ILLUSTRATION]

180

1028 EMBROIDERED RED VELVET ARMCHAIR SPAIN, 16TH CENTURY
[SEE ILLUSTRATION]

185

1029 EMBROIDERED RED VELVET ARMCHAIR SPAIN, 16TH CENTURY
[SEE ILLUSTRATION]

235

1030 ARMOIRE SPAIN, 17TH CENTURY

640

1031 LARGE DOUBLE DOOR STUDDED WITH IRON NAILS
With knocker. SPAIN, 16TH CENTURY
[SEE FRONTISPIECE]

150

1032 LARGE CARVED TABLE SPAIN, 17TH CENTURY

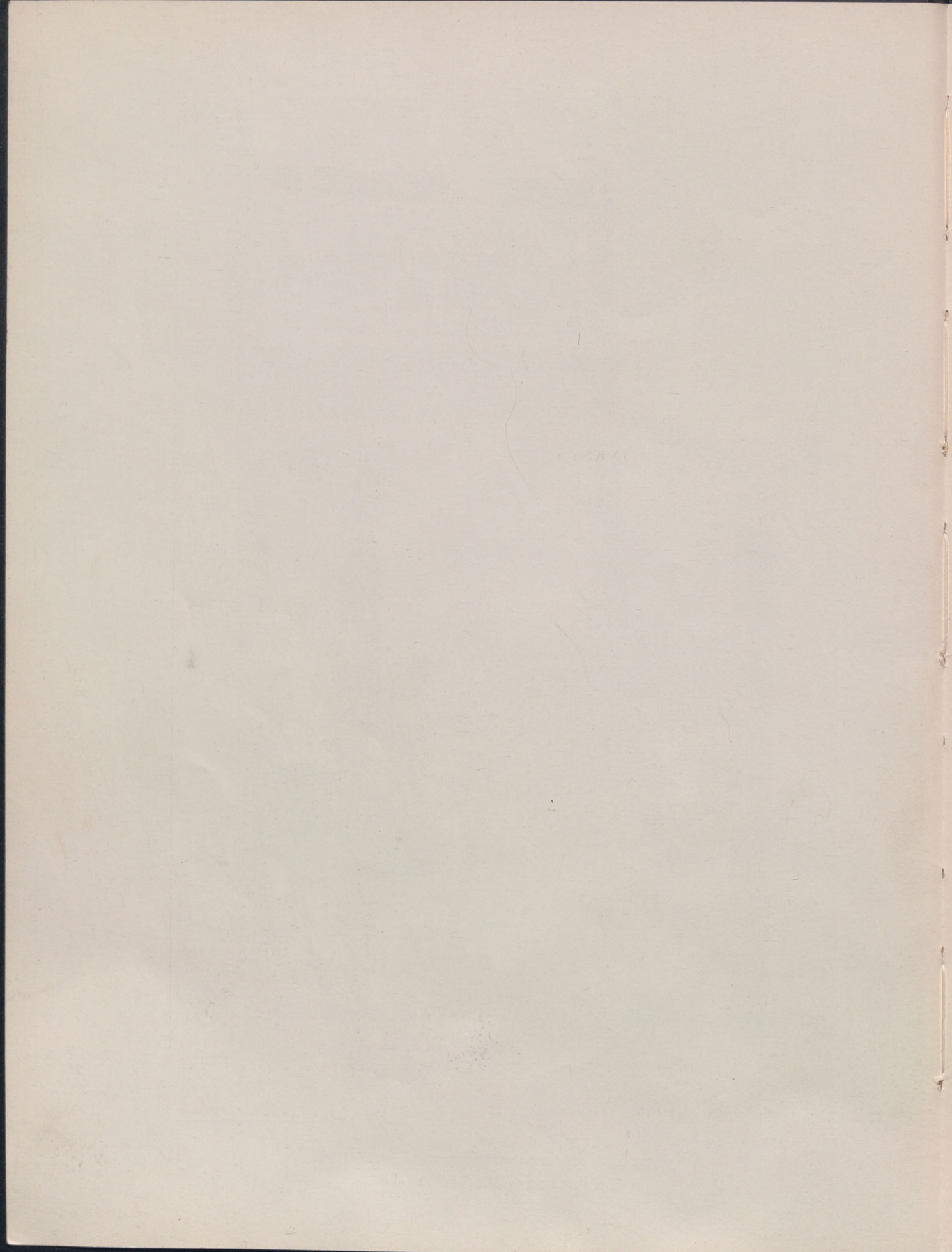
325

1033 LARGE CARVED TABLE SPAIN, 16TH CENTURY

14460



FOUR RED VELVET EMBROIDERED ARMCHAIRS
[NUMBERS 1026-1029]



SIXTH SESSION

NUMBERS 1034-1281

1034	PAIR OF POLYCHROME METAL CHANDELIERS	SPAIN, 18TH CENTURY	54 50
	Decorated with figures of kings and queens. (2)		
1035	PAIR OF BRONZE CHANDELIERS	SPAIN, 18TH CENTURY	9
	(2)		
1036	METAL "PERFUMADOR"	SPAIN, 17TH CENTURY	8
1037	TALAVERA INKSTAND	SPAIN, 17TH CENTURY	10
1038	PAIR OF TALAVERA VASES	SPAIN, 17TH CENTURY	10
	(2)		
1039	LAMP	SPAIN, 17TH CENTURY	8
1040	PAIR OF TALAVERA VASES	SPAIN, 17TH CENTURY	9
	(2)		
1041	PAIR OF TALAVERA VASES	SPAIN, 17TH CENTURY	22 50
	(2)		
1042	PAIR OF TALAVERA VASES	SPAIN, 17TH CENTURY	12
	(2)		
1043	TALAVERA JUG	SPAIN, 18TH CENTURY	14
1044	TALAVERA JUG	SPAIN, 18TH CENTURY	12
1045	TALAVERA DISH <i>Cuenca</i>	SPAIN, 17TH CENTURY	37 50
1046	TALAVERA JUG	SPAIN, 18TH CENTURY	17
1047	PAIR OF TALAVERA VASES	SPAIN, 17TH CENTURY	22 50
	(2)		
1048	TALAVERA DISH <i>Cuenca</i>	SPAIN, 17TH CENTURY	32 50
1049	TALAVERA JUG	SPAIN, 18TH CENTURY	20

30150

45

1050 TALAVERA JUG SPAIN, 18TH CENTURY

17 50

1051 FILET LACE STRIP SPAIN, 18TH CENTURY
With figures of horses.

8

1052 PILLOW CASE SPAIN, 17TH CENTURY

12 50

1053 DRAWNWORK STRIP SPAIN, 17TH CENTURY

25

1054 FILET LACE STRIP SPAIN, 18TH CENTURY

17 50

1055 DRAWNWORK STRIP SPAIN, 18TH CENTURY

16

1056 DRAWNWORK STRIP SPAIN, 17TH CENTURY

20

1057 STRIP OF FILET LACE SPAIN, 17TH CENTURY

11

1058 DRAWNWORK STRIP SPAIN, 17TH CENTURY

19

1059 FILET LACE STRIP SPAIN, 17TH CENTURY

37

1060 FILET LACE STRIP SPAIN, 17TH CENTURY

14

1061 DRAWNWORK LACE STRIP SPAIN, 17TH CENTURY

17

1062 DRAWNWORK STRIP SPAIN, 17TH CENTURY

19

1063 FILET LACE STRIP SPAIN, 17TH CENTURY

26

1064 FILET LACE STRIP SPAIN, 17TH CENTURY
Animal pattern.

1065 FILET LACE STRIP *no parcel* SPAIN, 17TH CENTURY

17

1066 FILET LACE STRIP SPAIN, 17TH CENTURY

22 50

1067 EMBROIDERED SASH SPAIN, 18TH CENTURY

10

1068 PIECE OF PINK SILK BROCADE SPAIN, 18TH CENTURY

35

1069 BLUE SILK BROCADE SPREAD SPAIN, 18TH CENTURY

27 50

1070 STRIP OF SILK BROCADE SPAIN, 18TH CENTURY

40

1071 STRIP OF BLUE BROCADE SPAIN, 18TH CENTURY

761

Item Number	Description	Origin	Price
1072	WHITE AND VIOLET SILK MANTLE FOR STATUE OF THE VIRGIN	SPAIN, 17TH CENTURY	761
1073	CHINTZ BED COVER With bird pattern.	SPAIN, 18TH CENTURY	26
1074	METAL BRAZIER	SPAIN, 18TH CENTURY	20
1075	METAL BRAZIER	SPAIN, 18TH CENTURY	22.50
1076	PAIR OF ANDIRONS (2)	SPAIN, 17TH CENTURY	22.50
1077	OPENWORK IRON ORNAMENT	SPAIN, 17TH CENTURY	22.50
1078	IRON WALL BRACKET WITH THREE LAMPS	SPAIN, 17TH CENTURY	20
1079	LARGE COPPER JAR	SPAIN, 18TH CENTURY	
1080	LARGE COPPER JAR	SPAIN, 18TH CENTURY	20
1081	LARGE JAR WITH FOUR HANDLES	SPAIN, 17TH CENTURY	80
1082	CARVED TABLE With lyre-shaped bracket end supports.	SPAIN, 17TH CENTURY	65
1083	CARVED TABLE With lyre-shaped bracket end supports.	SPAIN, 17TH CENTURY	45
1084	TABLE ENDS With lyre-shaped bracket.	SPAIN, 17TH CENTURY	160
1085	CARVED TABLE	SPAIN, 17TH CENTURY	95
1086	CARVED TABLE	SPAIN, 17TH CENTURY	65
1087	CARVED TABLE	SPAIN, 17TH CENTURY	85
1088	CARVED TABLE <i>Elriaco</i>	SPAIN, 17TH CENTURY	105
1089	CARVED CHEST	SPAIN, 17TH CENTURY	70
1090	SMALL TABLE WITH INCRUSTATIONS	SPAIN, 17TH CENTURY	75
1091	CARVED CHEST	SPAIN, 17TH CENTURY	60

1819 50

1092 CARVED CHEST SPAIN, 17TH CENTURY

75

1093 CARVED CHEST SPAIN, 17TH CENTURY

1094 PAIR OF BODEGONES OR GENRE PAINTINGS
(2) FLEMISH, 17TH CENTURY

[SEE ILLUSTRATION]

1095 PAINTING ON COPPER *no parece* SPAIN, 17TH CENTURY *parecia*

40

1096 PAINTING ON PANEL
Virgin and Child. SPAIN, 16TH CENTURY

1097 STILL LIFE PAINTING, GENRE SCENE DUTCH, 17TH CENTURY

1098 PAINTING ON PANEL *solo el marco*
Virgin and Child. *tabla estropeada* SPAIN, 16TH CENTURY

100

1099 PAINTING ON COPPER
Representing the Wedding of Cana. SPAIN, 17TH CENTURY

105

1100 PAINTING ON PANEL *margaretta* ITALIAN SCHOOL, 16TH CENTURY
Virgin and Child.

52 50

1101 LEATHER ARMCHAIR WITH CUSHION SPAIN, 17TH CENTURY

55

1102 ARMCHAIR WITH TOOLED LEATHER BACK
With cushion. SPAIN, 17TH CENTURY

55

1103 UPHOLSTERED ARMCHAIR SPAIN, 17TH CENTURY

23

1104 LANTERN SPAIN, 17TH CENTURY

52 50

1105 PAIR OF LANTERNS
(2) SPAIN, 17TH CENTURY

22 50

1106 LANTERN SPAIN, 17TH CENTURY

42 50

1107 PAIR OF LANTERNS
(2) SPAIN, 17TH CENTURY

12 50

1108 METAL HANGING LAMP SPAIN, 17TH CENTURY

19

1109 METAL LAMP SPAIN, 17TH CENTURY

30

1110 METAL LAMP SPAIN, 17TH CENTURY

2504



FLEMISH 17TH CENTURY GENRE PAINTING
[NUMBER 1094]

2504

25

1111 PAIR OF LANTERNS (2) SPAIN, 17TH CENTURY

35

1112 LANTERN SPAIN, 18TH CENTURY

6750

1113 PAIR OF LANTERNS (2) SPAIN, 18TH CENTURY

65

1114 PAIR OF LANTERNS (2) SPAIN, 18TH CENTURY

25

1115 LANTERN SPAIN, 18TH CENTURY

45

1116 HANGING CHURCH LAMP SPAIN, 17TH CENTURY

130

1117 LANTERN SPAIN, 16TH CENTURY

75

1118 LANTERN SPAIN, 17TH CENTURY

25

1119 METAL HANGING CHURCH LAMP SPAIN, 17TH CENTURY

20

1120 METAL LAMP SPAIN, 17TH CENTURY

25

1121 METAL LAMP SPAIN, 17TH CENTURY

15

1122 TWO VOLUMES DEALING WITH RELIGIOUS SUBJECTS SPAIN, 16TH CENTURY
"Mistica Ciudad de Dios." Tooled leather binding. (2)

11

1123 OLD SPANISH BOOK 17TH CENTURY

1124 BOOK IN TOOLED LEATHER BINDING SPAIN, 16TH CENTURY
The legend of St. Anthony.

1125 BOOK IN TOOLED LEATHER BINDING SPAIN, 16TH CENTURY
Dealing with St. Paul.

11

1126 BOOK IN TOOLED LEATHER BINDING SPAIN, 16TH CENTURY
The commentaries of St. Thomas.

30

1127 SPANISH BOOK OF GEOGRAPHY 16TH CENTURY

95

1128 SPANISH BOOK OF GEOGRAPHY 16TH CENTURY

1129 HAND-WRITTEN MISSAL WITH MINIATURE PAINTINGS SPAIN, 16TH CENTURY

[SEE ILLUSTRATIONS, PAGES 75 AND 76]

3203/50

per
 ges me
 mme byslopo
 et mundabo
 qua bis me

et super m
 uem & alb.
 bo.
 serere me
 us se cundum
 magnam msc

SPANISH 16TH CENTURY HAND-WRITTEN MISSAL WITH MINIATURE PAINTINGS
 [NUMBER 1129]



SPANISH 16TH CENTURY HAND-WRITTEN MISSAL
WITH MINIATURE PAINTINGS
[NUMBER 1129]



16TH CENTURY GILT AND POLYCHROME RELIEF CARVING OF THE NATIVITY
[NUMBER 1138]

320350

70

1130 MISSAL HAND-WRITTEN ON VELLUM SPAIN, 16TH CENTURY

15

1131 MISSAL HAND-WRITTEN ON VELLUM SPAIN, 16TH CENTURY

1132 BOOK WITH ENGRAVINGS
Binding with decoration of busts of kings. SPAIN, 16TH CENTURY

45

1133 MISSAL HAND-WRITTEN ON VELLUM SPAIN, 16TH CENTURY

55

1134 MISSAL HAND-WRITTEN ON VELLUM SPAIN, 16TH CENTURY

1135 TWO VOLUMES, THE OLD AND NEW TESTAMENT
(2) SPAIN, 17TH CENTURY

35

1136 LEATHER CHAIR SPAIN, 17TH CENTURY

1137 STATUE OF THE VIRGIN
With pedestal. SPAIN, 16TH CENTURY

95

1138 GILT AND POLYCHROME RELIEF CARVING
The Nativity. SPAIN, 16TH CENTURY

[SEE ILLUSTRATION, PAGE 77]

2250

1139 BAS RELIEF
With representation of cow and horse. SPAIN, 16TH CENTURY

160

1140 LARGE COPPER JAR WITH IRON FEET SPAIN, 18TH CENTURY

70

1141 CARVED TABLE
With lyre-shaped bracket end supports. SPAIN, 17TH CENTURY

155

1142 TABLE
With carved lyre-shaped bracket end supports. SPAIN, 17TH CENTURY

17750

1143 CARVED TABLE *hierros bonitos*
With lyre-shaped bracket end supports. SPAIN, 17TH CENTURY

8750

1144 TABLE WITH CURVED LEGS SPAIN, 16TH CENTURY

325

1145 GOTHIC CARVED AND POLYCHROME NICHE WITH
FIGURE OF ST. JOHN SPAIN, 15TH CENTURY

[SEE ILLUSTRATION]

21

1146 BRONZE MORTAR SPAIN, 16TH CENTURY

18

1147 BRONZE MORTAR SPAIN, 16TH CENTURY

4555



GOTHIC CARVED AND POLYCHROME NICHE

WITH FIGURE OF ST. JOHN

[NUMBER 1145]

4555

22

1148 BRONZE MORTAR SPAIN, 16TH CENTURY

25

1149 BRONZE MORTAR SPAIN, 16TH CENTURY

25

1150 BRONZE MORTAR SPAIN, 16TH CENTURY

26

1151 BRONZE MORTAR SPAIN, 16TH CENTURY

21

1152 BRONZE MORTAR
With decoration of mascarons. SPAIN, 17TH CENTURY

52 50

1153 GOTHIC BRONZE MORTAR SPAIN, 15TH CENTURY

30

1154 METAL LAMP SPAIN, 16TH CENTURY

40

1155 GREEN AND WHITE MANTLE FOR STATUE OF THE
VIRGIN SPAIN, 17TH CENTURY

75

1156 RED DAMASK SPREAD TRIMMED WITH SILVER BRAID
SPAIN, 17TH CENTURY

1157 CREAM-COLORED DAMASK SPREAD ~~TRIMMED WITH~~
~~SILVER BRAID~~ SPAIN, 16TH CENTURY

100

1158 RED DAMASK SPREAD SPAIN, 17TH CENTURY

1159 RED DAMASK SPREAD
With design of crowns and angels. SPAIN, 17TH CENTURY

27 50

1160 CHINTZ SPREAD SPAIN, 18TH CENTURY

37 50

1161 CHINTZ SPREAD
With Spanish coat of arms. SPAIN, 18TH CENTURY

20

1162 CHINTZ SPREAD SPAIN, 18TH CENTURY

17

1163 CHINTZ SPREAD WITH BIRD PATTERN SPAIN, 18TH CENTURY

30

1164 CHINTZ SPREAD SPAIN, 18TH CENTURY

12 50

1165 BROCADE SASH SPAIN, 17TH CENTURY

1166 RED DAMASK SPREAD SPAIN, 17TH CENTURY

50

1167 RED AND WHITE DAMASK SPREAD SPAIN, 16TH CENTURY

5766

- 5166
- 1168 GENTLEMAN'S EMBROIDERED WAISTCOAT
 SPAIN, 18TH CENTURY 10
- 1169 "MANTON DE MANILA" OR EMBROIDERED SHAWL
 SPAIN, 18TH CENTURY 25
 White, embroidered in colors.
- 1170 GREEN "MANTON DE MANILA" OR EMBROIDERED SHAWL
 SPAIN, 18TH CENTURY 37.50
 Embroidered in colors.
- 1171 WHITE "MANTON DE MANILA" OR EMBROIDERED SHAWL
 SPAIN, 18TH CENTURY 80
- 1172 WHITE "MANTON DE MANILA" OR EMBROIDERED SHAWL
 SPAIN, 18TH CENTURY
 Embroidered in white.
- 1173 YELLOW "MANTON DE MANILA" OR EMBROIDERED
 SHAWL 45
 SPAIN, 18TH CENTURY
 Embroidered in colors.
- 1174 FILET LACE TABLE COVER
 SPAIN, 17TH CENTURY 54.50
- 1175 FILET LACE TABLE COVER
 SPAIN, 17TH CENTURY
- 1176 EMBROIDERED TABLE COVER TRIMMED WITH SILVER
 LACE
 SPAIN, 17TH CENTURY 55
- 1177 BLUE EMBROIDERED BED COVER
 SPAIN, 18TH CENTURY
- 1178 PAINTING ON PANEL
 The death of the Virgin.
 SPAIN, 14TH CENTURY 375
- [SEE ILLUSTRATION, PAGE 82]
- 1179 SET OF TEN RENAISSANCE PAINTED WOODEN PANELS
 Decorated with classical busts. (10)
 SPAIN, 16TH CENTURY
- 1180 CHEST WITH COAT OF ARMS
 SPAIN, 17TH CENTURY 70
- 1181 CARVED CHEST
 SPAIN, 17TH CENTURY 150
- 1182 SMALL TABLE
 SPAIN, 17TH CENTURY 65



14TH CENTURY PAINTING ON PANEL, THE DEATH OF THE VIRGIN
[NUMBER 1178]

1183	CARVED TABLE	SPAIN, 16TH CENTURY	6166 45
1184	CARVED TABLE With lyre-shaped bracket end supports.	SPAIN, 17TH CENTURY	50
1185	TABLE With lyre-shaped bracket ends.	SPAIN, 17TH CENTURY	95
1186	CARVED TABLE	SPAIN, 16TH CENTURY	60
1187	TABLE With lyre-shaped bracket supports.	SPAIN, 17TH CENTURY	105
1188	CARVED TABLE With coat of arms.	SPAIN, 17TH CENTURY	110
1189	WOODEN BENCH	SPAIN, 17TH CENTURY	55
1190	CARVED SHUTTER	SPAIN, 17TH CENTURY	45
1191	DOOR FROM A CONVENT OF TOLEDO	SPAIN, 17TH CENTURY	280
1192	CARVED SHUTTER	SPAIN, 17TH CENTURY	1750
1193	CARVED SHUTTER	SPAIN, 18TH CENTURY	
1194	EBONY AND BRONZE CABINET	SPAIN, 17TH CENTURY	
1195	DOUBLE DOOR	SPAIN, 17TH CENTURY	110
1196	DOUBLE DOOR Studded with nails and fitted with knocker.	SPAIN, 16TH CENTURY	600
1197	DOOR WITH SQUARE PANELLING	SPAIN, 17TH CENTURY	70
1198	DOOR Studded with iron nails and fitted with knocker.	SPAIN, 16TH CENTURY	300
1199	DOOR Studded with iron nails and fitted with knocker.	SPAIN, 16TH CENTURY	345
1200	DOOR Studded with iron nails and fitted with knocker.	SPAIN, 16TH CENTURY	
1201	DOOR Studded with iron nails and fitted with knocker.	SPAIN, 16TH CENTURY	255

1201 A. 1 ventana ⁸³ 2 llojas ----- 25
 1201 B. 1 id id ----- 35

8498/50

8798 50

65

1202 TABLE SPAIN, 17TH CENTURY
With lyre-shaped bracket end supports.

1203 RED DAMASK CUSHION *no parece* SPAIN, 16TH CENTURY

1204 VELVET BENCH SPAIN, 17TH CENTURY
The back embroidered with representations of Saints.
[SEE ILLUSTRATION]

1205 SET OF TWELVE ARABIC MODILLIONS
HISPANO-MOESQUE, 12TH CENTURY
Taken from the castle of the town of Manresa in Catalonia. Carved and decorated wood ending in lion-masks. Used to form the support of the beams of the ceiling. (12)

127 50

1206 CARVED CHEST SPAIN, 17TH CENTURY

1207 PAIR OF BODEGONES OR GENRE PAINTINGS
(2) FLEMISH, 17TH CENTURY

45

1208 BLACK ALPUJARRAS CARPET SPAIN, 17TH CENTURY
Animal design.

1209 BLACK AND RED ALPUJARRAS CARPET SPAIN, 17TH CENTURY

52 50

1210 BLUE ALPUJARRAS CARPET SPAIN, 17TH CENTURY

85

1211 BLUE ALPUJARRAS CARPET SPAIN, 17TH CENTURY

85

1212 BLUE ALPUJARRAS CARPET SPAIN, 17TH CENTURY

65

1213 CARVED TABLE *otol* SPAIN, 17TH CENTURY

1214 CARVED GOTHIC CHEST SPAIN, LATE 15TH CENTURY
Decorated with linen-fold carving.

1215 CARVED DOOR SPAIN, 15TH CENTURY

100

1216 DOUBLE DOOR FROM TOLEDO SPAIN, 16TH CENTURY
Decorated with star-shaped nails.

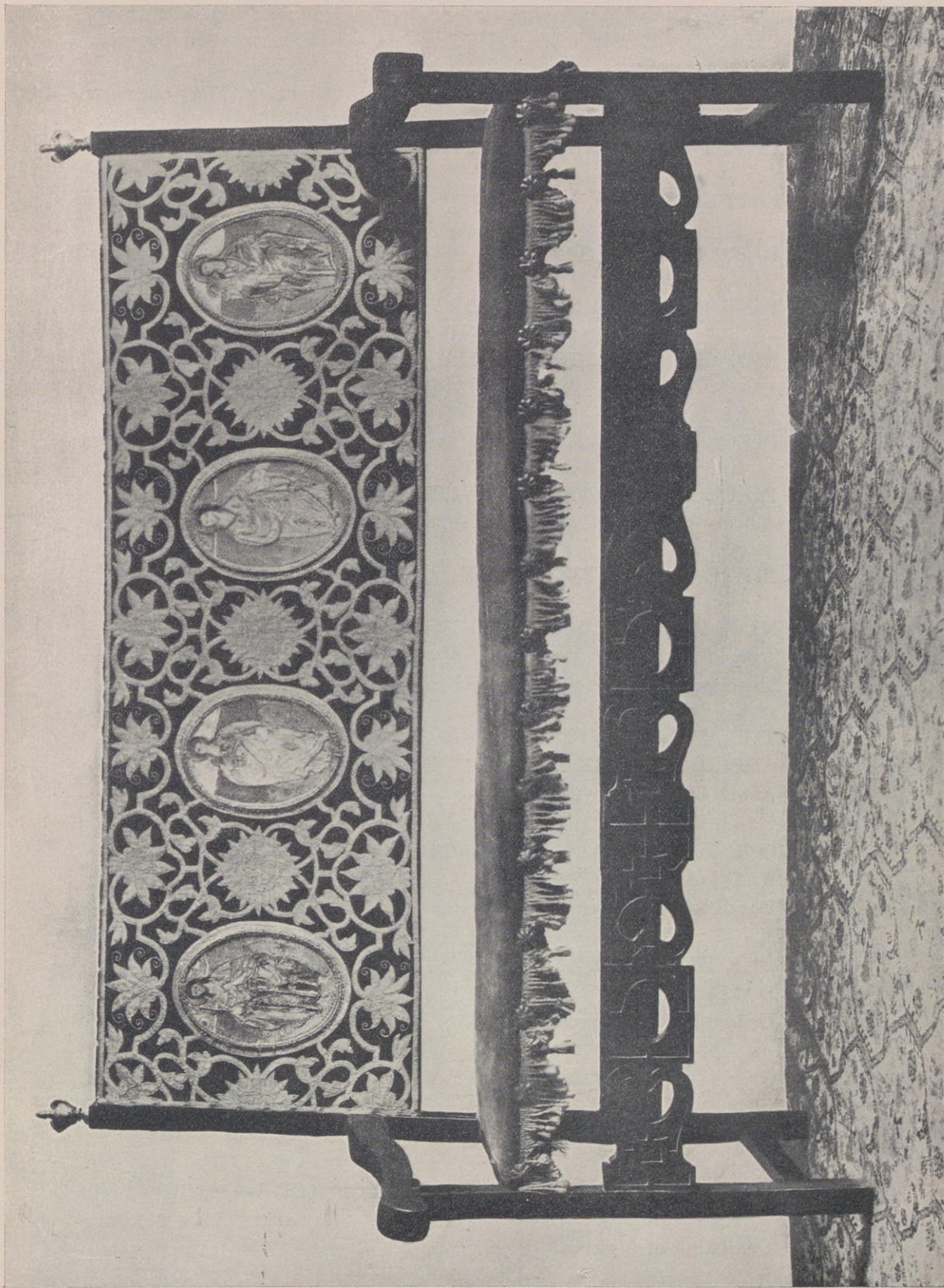
210

1217 SMALL WROUGHT-IRON WINDOW GRATING FROM TOLEDO
SPAIN, 16TH CENTURY

370

1218 WROUGHT-IRON GRATING WITH DECORATED TOP
SPAIN, 16TH CENTURY

10003 50



17TH CENTURY VELVET BENCH
[NUMBER 1204]

10003 50

90

60

90

75

- 1219 SMALL CARVED TABLE SPAIN, 17TH CENTURY
- 1220 SMALL CARVED TABLE SPAIN, 17TH CENTURY
- 1221 CHEST WITH CARVED COAT OF ARMS SPAIN, 16TH CENTURY
- 1222 COPPER JAR SPAIN, 17TH CENTURY
- 1223 BLUE DAMASK SPREAD SPAIN, 17TH CENTURY
- 1224 PINK EMBROIDERED FABRIC SPAIN, 17TH CENTURY

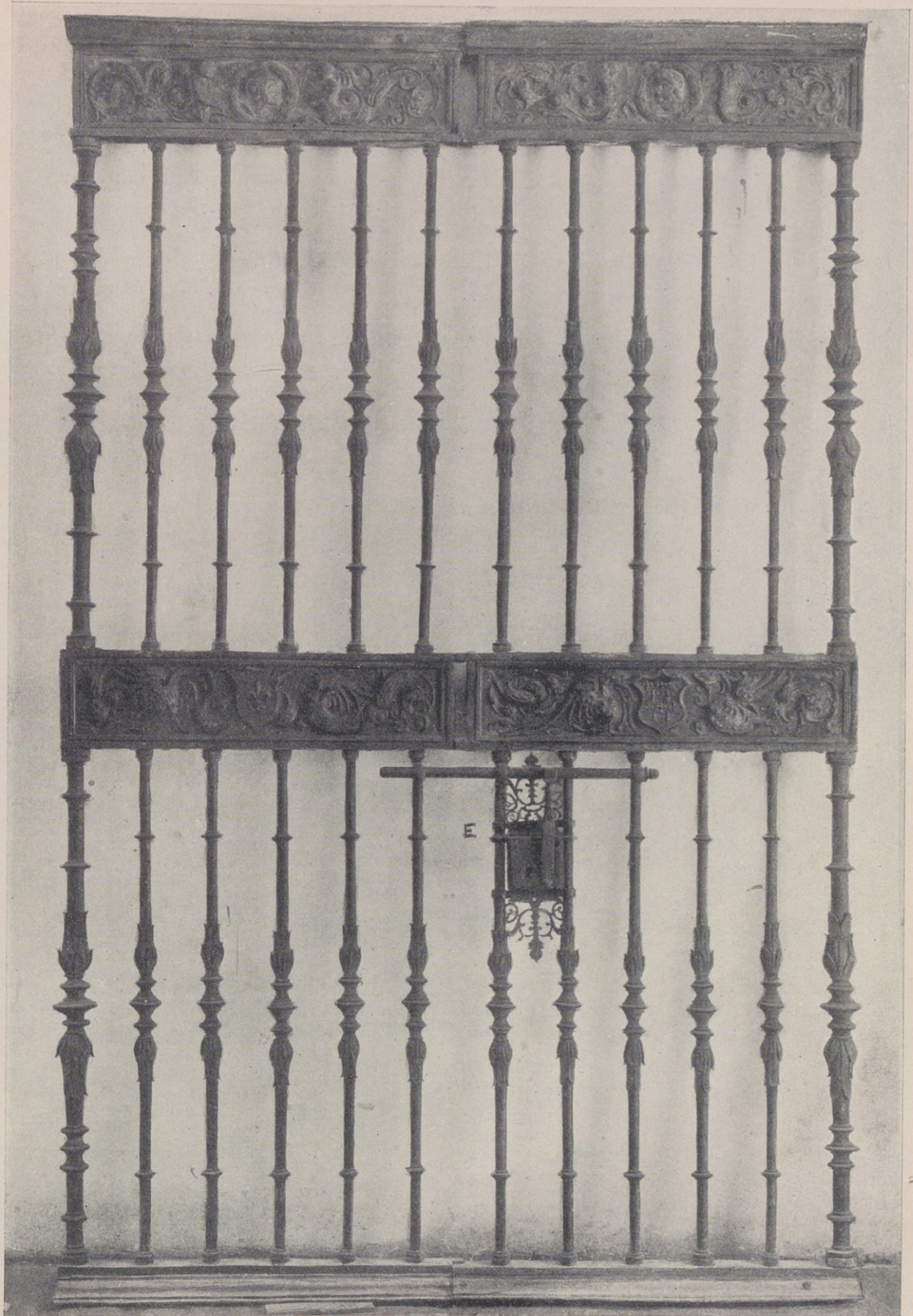
65

- 1225 RED VELVET FABRIC TRIMMED WITH APPLIQUE
SPAIN, 16TH CENTURY
- 1226 PIECE OF RED VELVET SPAIN, 16TH CENTURY
- 1227 PIECE OF RED VELVET WITH APPLIQUE
SPAIN, 17TH CENTURY

35

- 1228 ²PIECE OF APPLIQUE WORK SPAIN, 17TH CENTURY
- 1229 NINE AND ONE HALF YARDS OF RED VELVET
SPAIN, 17TH CENTURY
Trimmed with appliqué work and fringe. In five pieces.
- 1230 TWENTY-FOUR PIECES OF FABRIC WITH VELVET
APPLIQUE WORK AND FRINGE SPAIN, 17TH CENTURY
About 33 yards. (24)
- 1231 ONE HUNDRED AND THIRTEEN AND A HALF YARDS OF
RED DAMASK SPAIN, 17TH CENTURY
Consisting of 20 pieces.
- 1232 ONE HUNDRED AND THIRTY ^{four}~~FIVE~~ YARDS OF RED
DAMASK SPAIN, 17TH CENTURY
Consisting of 22 pieces.
- 1233 ONE HUNDRED AND SIXTY-TWO YARDS OF RED DAMASK
SPAIN, 17TH CENTURY
Consisting of 24 pieces.
- 1234 FORTY-FIVE AND A HALF YARDS OF RED DAMASK
SPAIN, 17TH CENTURY
Consisting of 6 pieces.

10418 50



RENAISSANCE DOUBLE IRON DOOR

[NUMBER 1240]

10418 50

390

1235 TWO HUNDRED AND ELEVEN YARDS OF RED AND
YELLOW DAMASK SPAIN, 17TH CENTURY
Consisting of 17 curtains.

62 50

1236 PAIR OF LANTERNS SUSPENDED FROM IRON BRACKETS
SPAIN, 17TH CENTURY
(2)

45

1237 LANTERN SUSPENDED FROM IRON BRACKET
SPAIN, 17TH CENTURY

40

1238 LANTERN SUSPENDED FROM IRON BRACKET
SPAIN, 17TH CENTURY

50

1239 LANTERN SUSPENDED FROM IRON BRACKET
SPAIN, 17TH CENTURY

1240 RENAISSANCE DOUBLE IRON DOOR SPAIN, 16TH CENTURY
[SEE ILLUSTRATION, PAGE 87]

300

1241 RARE ROMANESQUE WROUGHT-IRON GRATING
Spiral design with two hinged shutters. SPAIN, 12TH CENTURY

1241A RENAISSANCE DOUBLE IRON DOOR SPAIN, 16TH CENTURY

1242 RENAISSANCE DOUBLE IRON DOOR SPAIN, 16TH CENTURY

22 50

1243 LANTERN SPAIN, 17TH CENTURY

32 50

1244 PAIR OF LANTERNS SPAIN, 17TH CENTURY
(2)

1245 BLACK VELVET MANTLE FOR STATUE OF THE VIRGIN
SPAIN, 17TH CENTURY

1246 IMPORTANT RED VELVET COPE WITH EMBROIDERED
SASH AND HOOD SPAIN, 16TH CENTURY

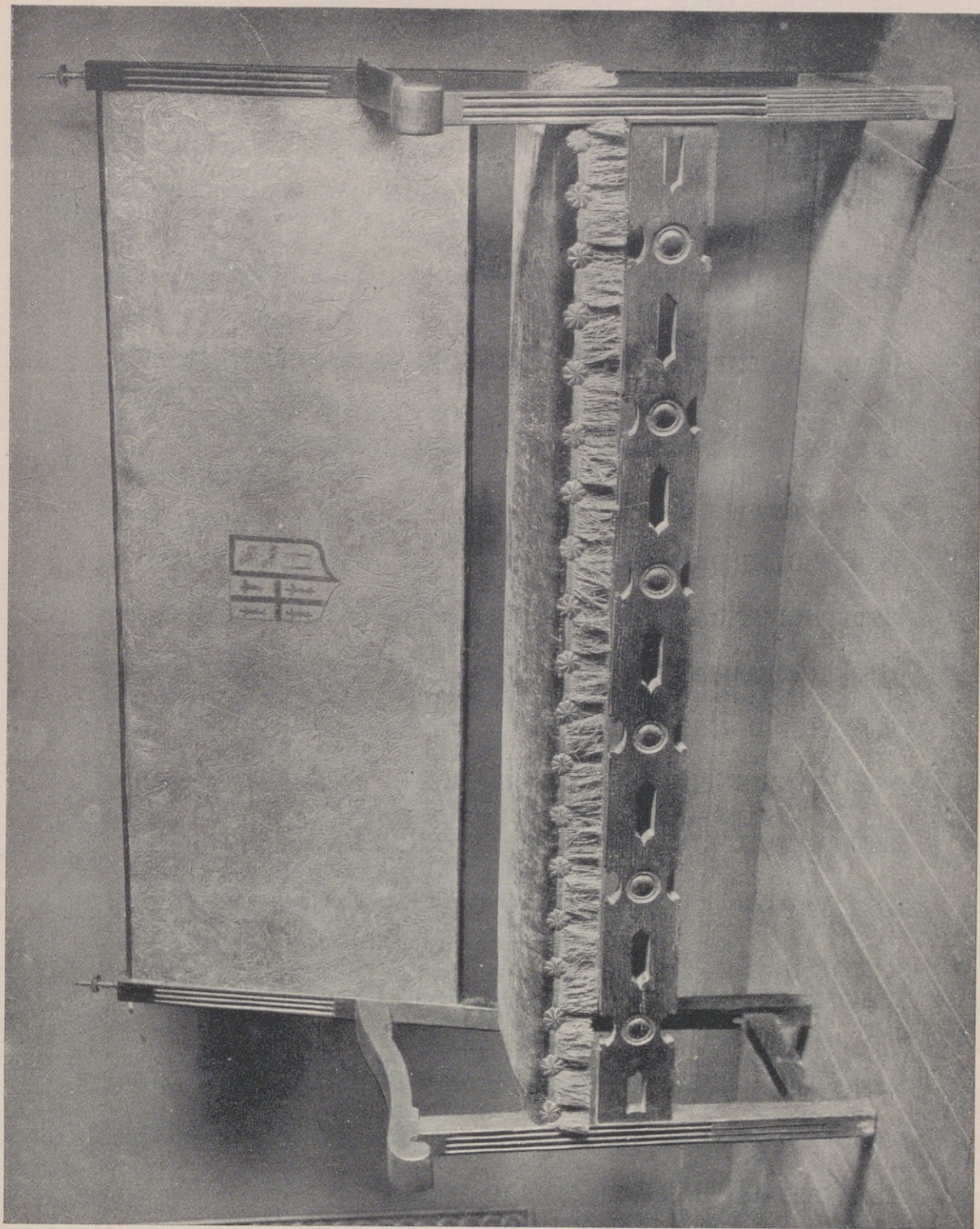
1247 LARGE CARVED TABLE SPAIN, 17TH CENTURY

1248 CARVED TABLE SPAIN, 17TH CENTURY

1249 CARVED TABLE *Valluerca* SPAIN, 17TH CENTURY

1250 CARVED TABLE *Lisa Navarra* SPAIN, 17TH CENTURY

11361



SPANISH 17TH CENTURY BENCH WITH COAT OF ARMS
[NUMBER 1263]

11361

75

70

45

75

90

13

13

20

20

1250

52 50

- 1251 TABLE WITH TWISTED COLUMNAR LEGS
SPAIN, 16TH CENTURY
- 1252 CARVED CHEST
SPAIN, 17TH CENTURY
- 1253 DAMASK ARMCHAIR
SPAIN, 17TH CENTURY
- 1254 DAMASK UPHOLSTERED ARMCHAIR
With coat of arms of Leon.
SPAIN, 17TH CENTURY
- 1255 DAMASK UPHOLSTERED ARMCHAIR
With coat of arms.
SPAIN, 17TH CENTURY
- 1256 UPHOLSTERED ARMCHAIR WITH EMBROIDERED BACK
SPAIN, 17TH CENTURY
- 1257 PAIR OF DAMASK UPHOLSTERED ARMCHAIRS
Decorated with coat of arms. (2)
SPAIN, 17TH CENTURY
- 1258 VIOLET DAMASK CUSHION
SPAIN, 16TH CENTURY
- 1259 VIOLET DAMASK CUSHION
SPAIN, 16TH CENTURY
- 1260 RED DAMASK CUSHION
SPAIN, 16TH CENTURY
- 1261 RED DAMASK CUSHION
SPAIN, 17TH CENTURY
- 1262 SALMON-PINK DAMASK CUSHION
SPAIN, 17TH CENTURY
- 1263 BENCH WITH ENGRAVED SILVERED BACK
Decorated with coat of arms, and with red velvet seat.
SPAIN, 17TH CENTURY

[SEE ILLUSTRATION, PAGE 89]

- 1264 PAIR OF CUSHIONS TRIMMED WITH LACE
(2)
SPAIN, 17TH CENTURY
- 1265 ANDALUSIAN ALPUJARRAS CARPET
SPAIN, 18TH CENTURY
- 1266 ANDALUSIAN ALPUJARRAS CARPET
SPAIN, 17TH CENTURY
- 1267 ANDALUSIAN ALPUJARRAS CARPET
SPAIN, 17TH CENTURY
- 1268 ANDALUSIAN ALPUJARRAS CARPET
SPAIN, 18TH CENTURY

Ruinada
Ruinada
Ruinada
Ruinada

11841

11847
85

1269 ANDALUSIAN ALPUJARRAS CARPET SPAIN, 18TH CENTURY

1270 IMPORTANT CARVED, GILT AND POLYCHROME ALTAR
SPAIN, LATE 15TH CENTURY

Representing the Adoration of the Shepherds. Set into a tabernacle of rich late Gothic finials and ornaments. The sculpture itself indicates Flemish influence.

Ruinada

1270A ANDALUSIAN ALPUJARRAS CARPET SPAIN, 18TH CENTURY

1271 CARVED DOOR SPAIN, 17TH CENTURY

1272 SET OF FIVE CARVED CHAIRS (5) SPAIN, 17TH CENTURY

100

1273 HEAVY WOODEN DOOR STUDDED WITH WROUGHT-IRON ORNAMENTS
SPAIN, 12TH CENTURY
A very fine specimen of Spanish early mediæval art.

1273A PAIR OF CARVED CHAIRS (2) SPAIN, 17TH CENTURY

45

1274 SET OF FOUR CARVED CHAIRS (4) SPAIN, 17TH CENTURY

55

1275 PAIR OF CARVED ARMCHAIRS FROM SALAMANCA
SPAIN, 17TH CENTURY
High arched back, richly carved in centre. (2)

100

1276 PAIR OF CARVED ARMCHAIRS FROM SALAMANCA
SPAIN, 17TH CENTURY
High arched back, richly carved in centre. (2)

165

1277 CARVED ARMCHAIR FROM SALAMANCA SPAIN, 17TH CENTURY
High arched back, richly carved in centre.

45

1278 CARVED ARMCHAIR FROM SALAMANCA SPAIN, 17TH CENTURY
High arched back, richly carved in centre.

57 50

1279 PAIR OF LEATHER ARMCHAIRS (2) SPAIN, 17TH CENTURY

80

1280 CARVED TABLE WITH IRON ORNAMENTS
SPAIN, 17TH CENTURY

1281 CARVED TABLE WITH IRON ORNAMENTS
SPAIN, 17TH CENTURY

85

12664/50

4867.

5562.50

8028.

6790.

14460.

12664.50

52372.

MUSEO NACIONAL
DEL PRADO

The Luis Ruiz
collection of
Corr/339



1108868

