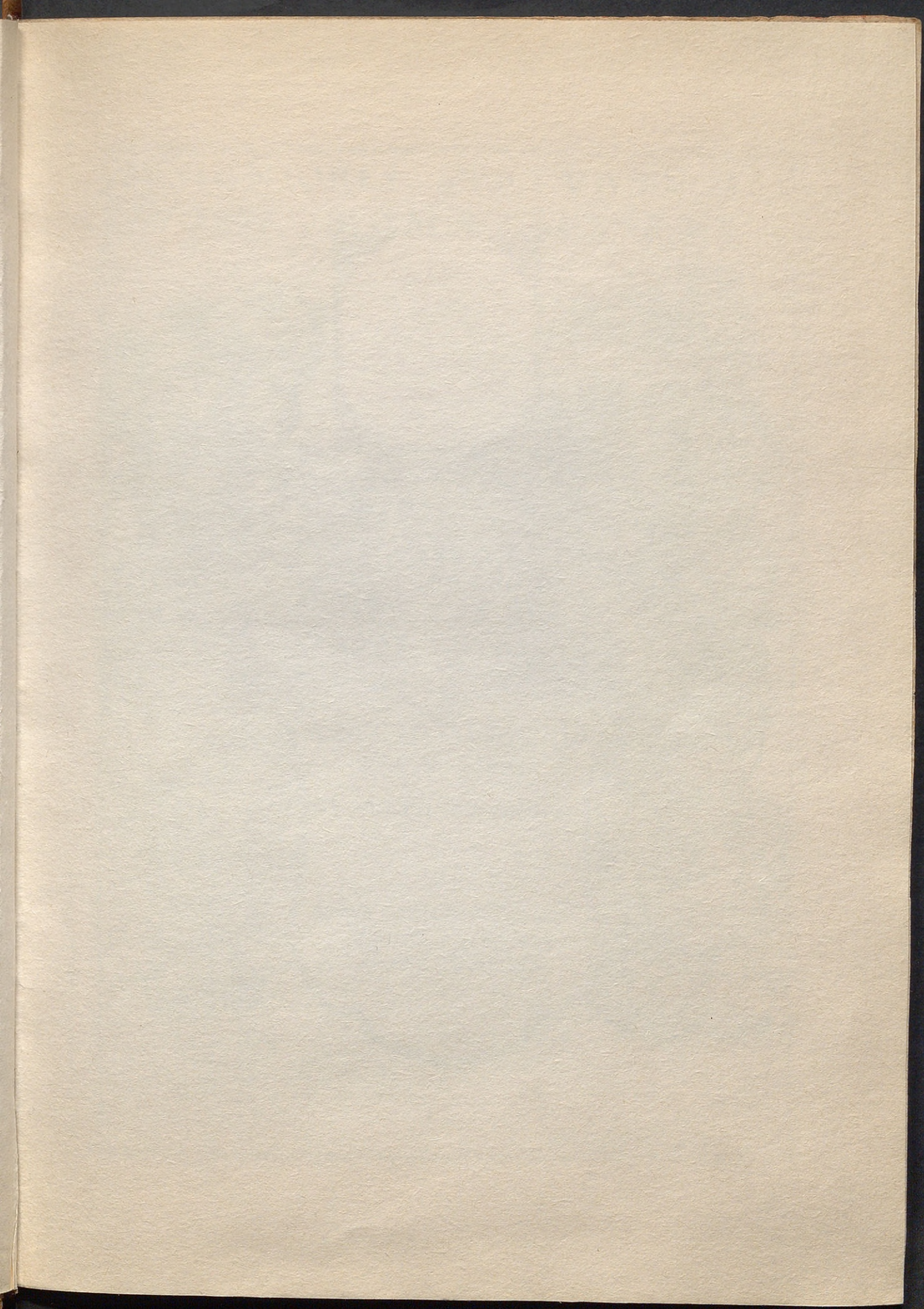


Bød / 197

R. 92. 867



139

INSIGNIORES STATVARVM
VRBIS ROMÆ ICONES.

*Dessins
des
Statues et
Monumens
remarquables
de Rome.*



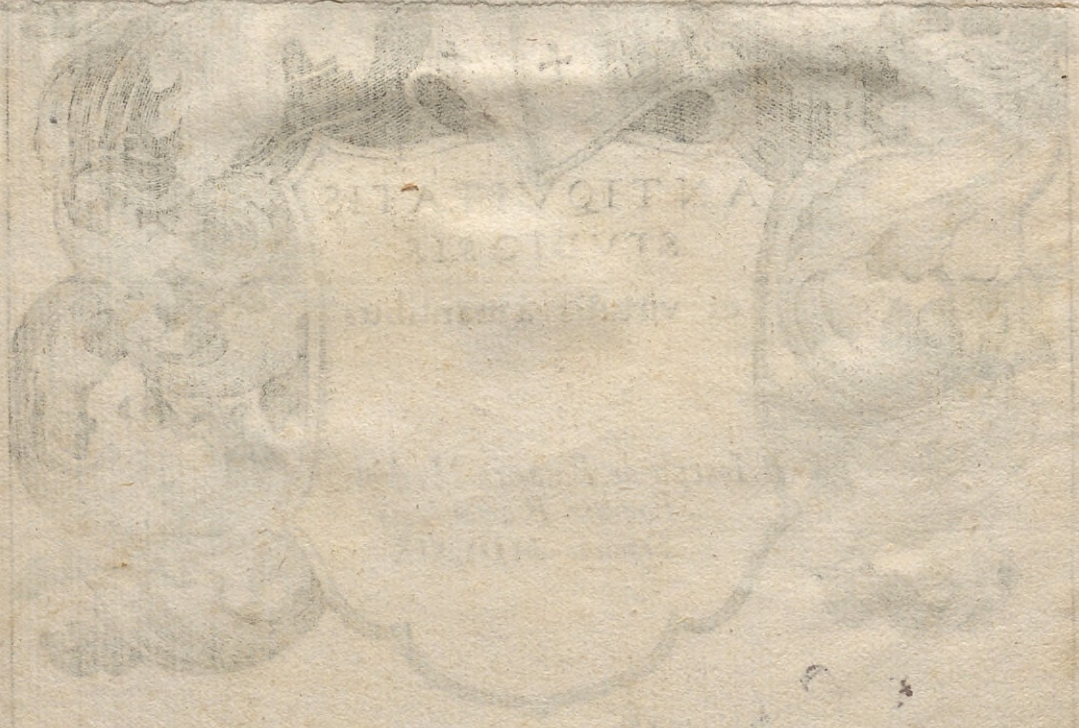
ANTIQVITATIS
STUDIO SIS.

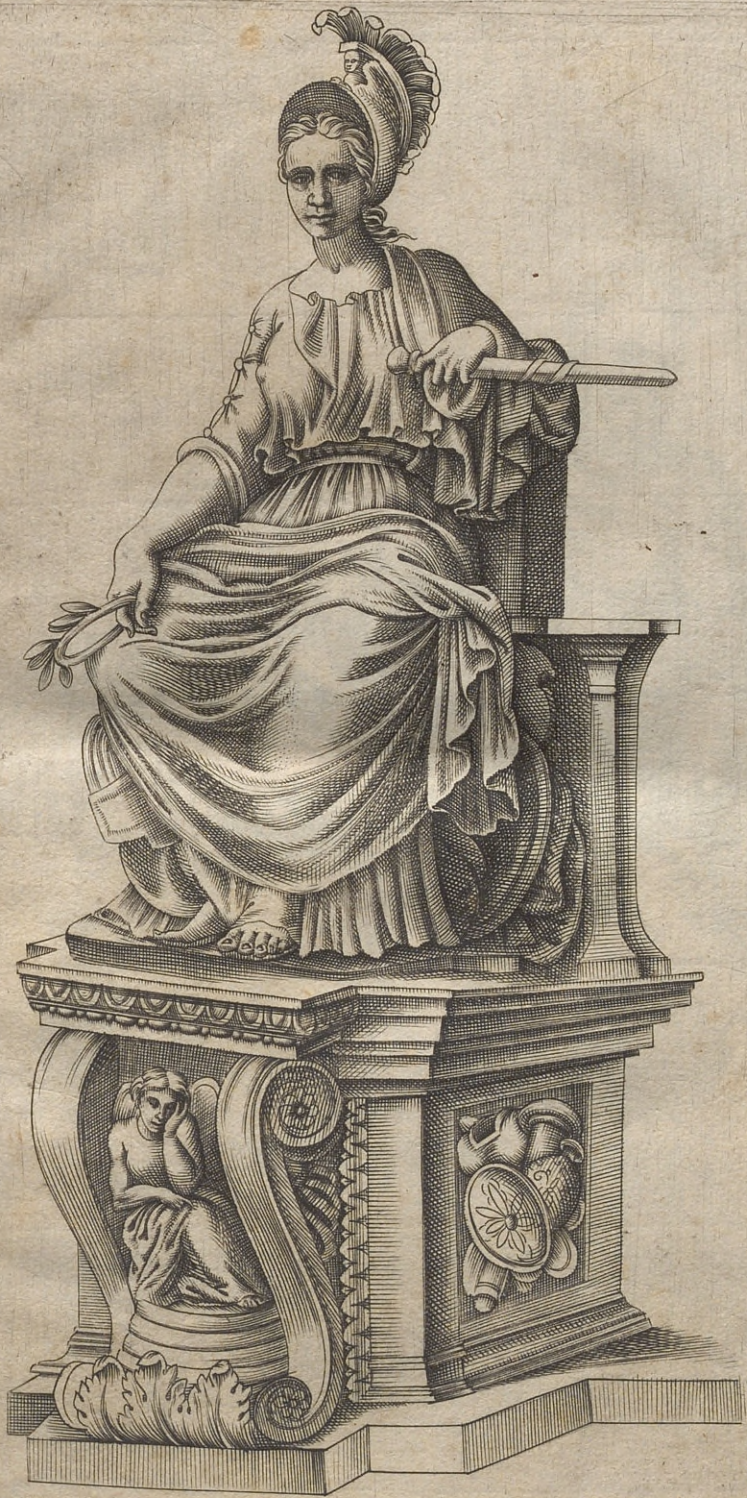
et virtutis amantibus

Ioseph de Rubæis Mediol.^s
Formis Romæ Anno
Domini MDCXIX.

Joseph de Rubæis

Romæ Superiorū permissū





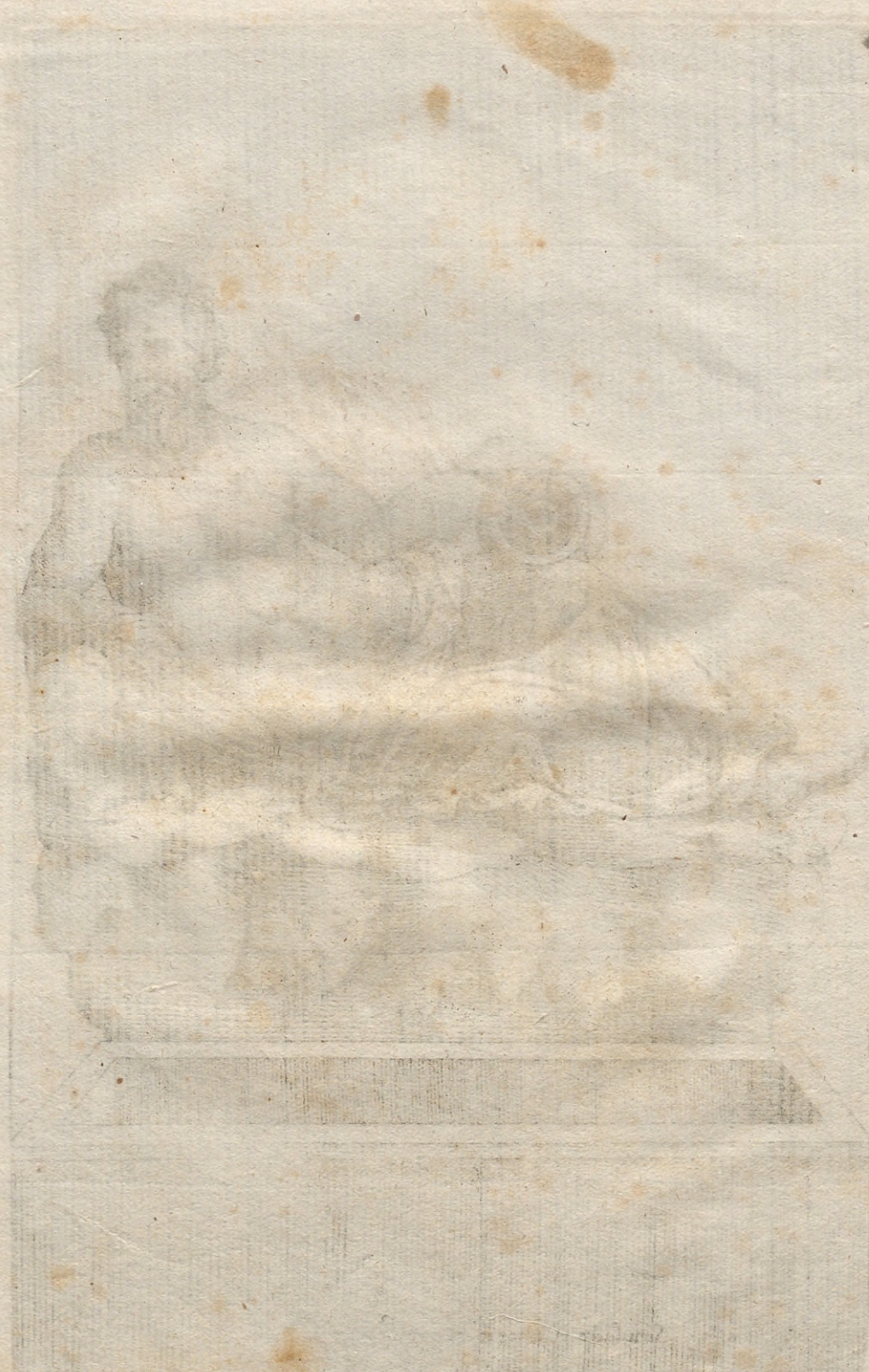
Romæ Colossus celebris, in hortis Car. Cesis cui Dacia capta subest. 1



Faint, illegible text, possibly a watermark or bleed-through from the reverse side of the page.

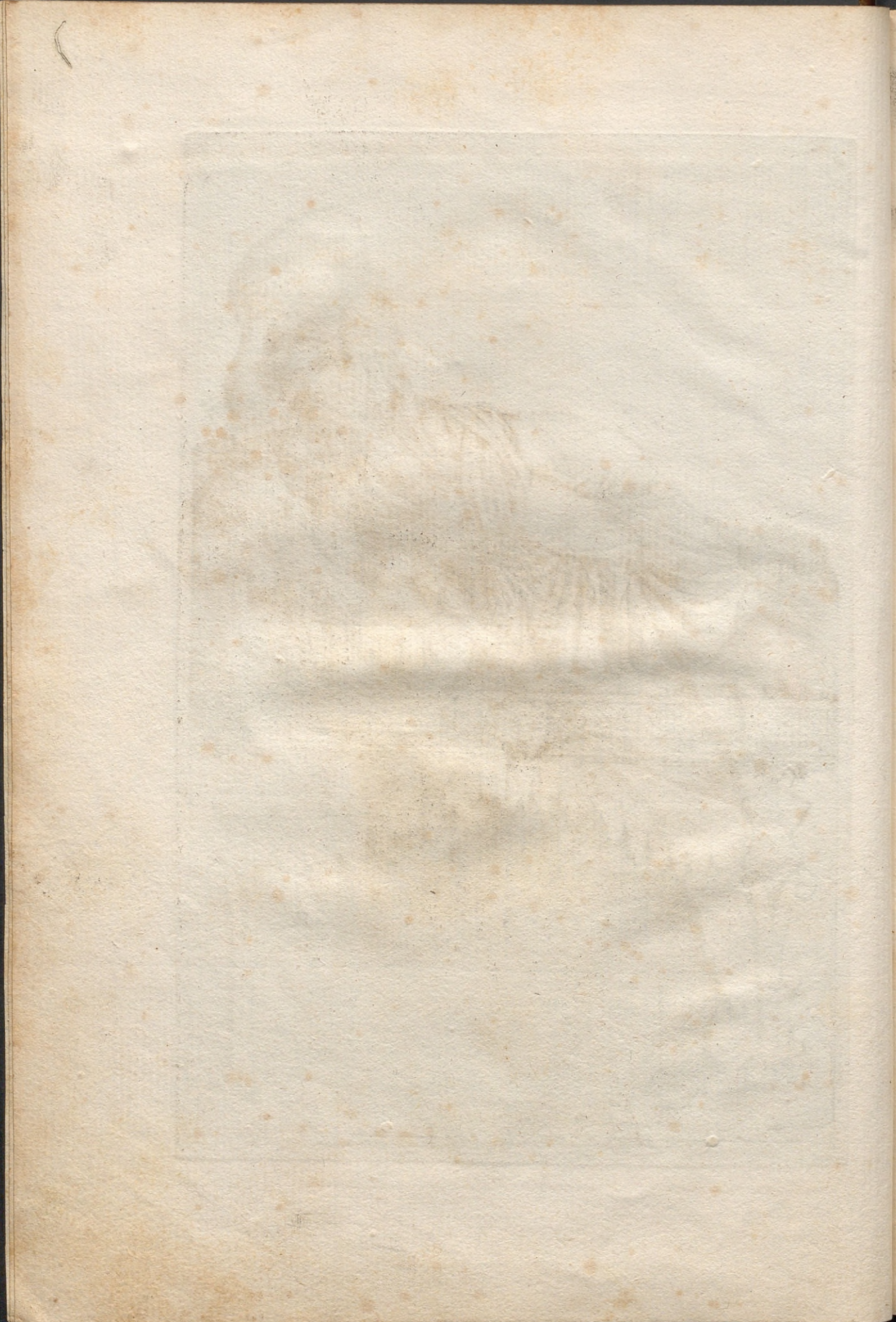


Simulacro marmoreo in grotto Vaticana



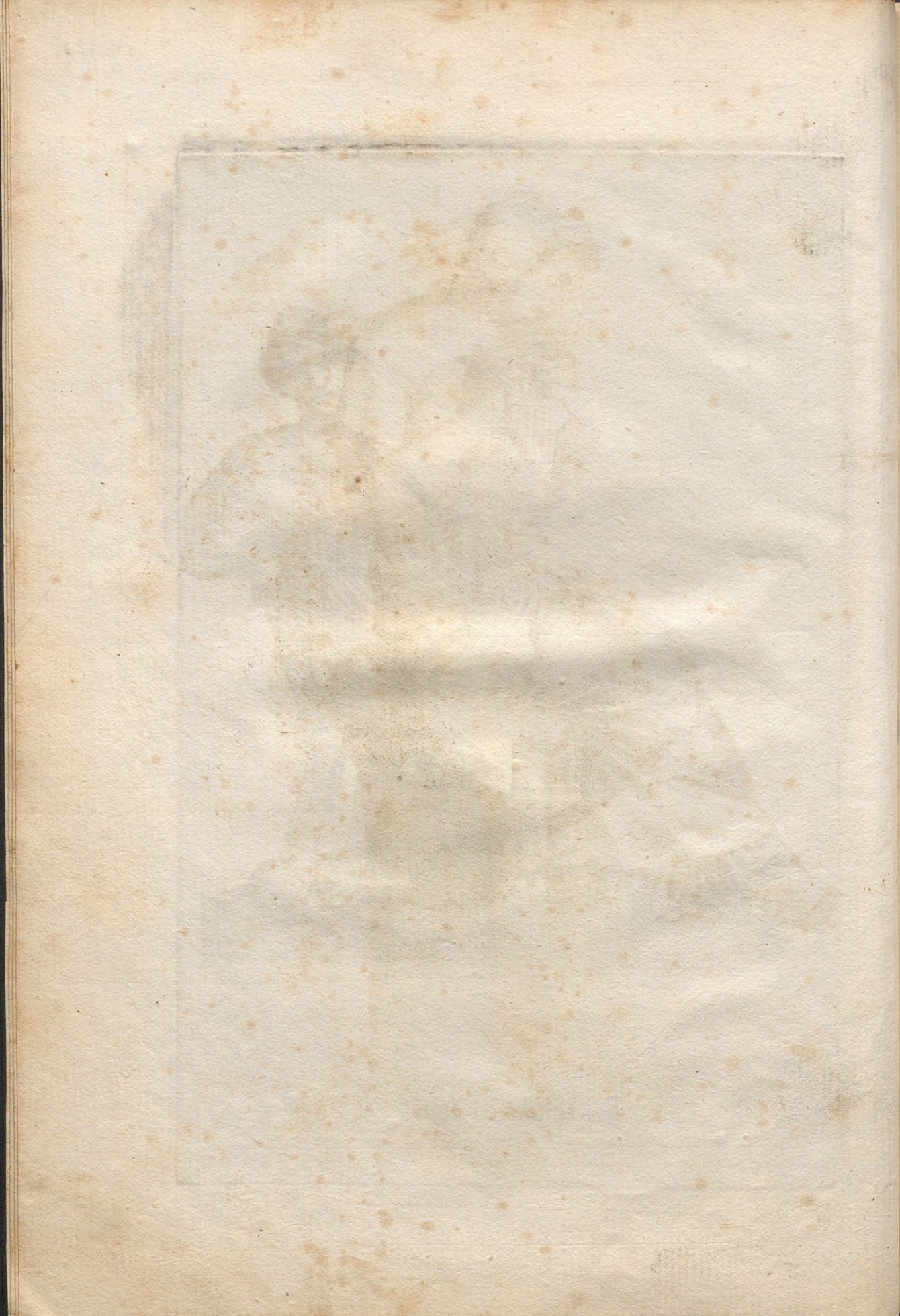


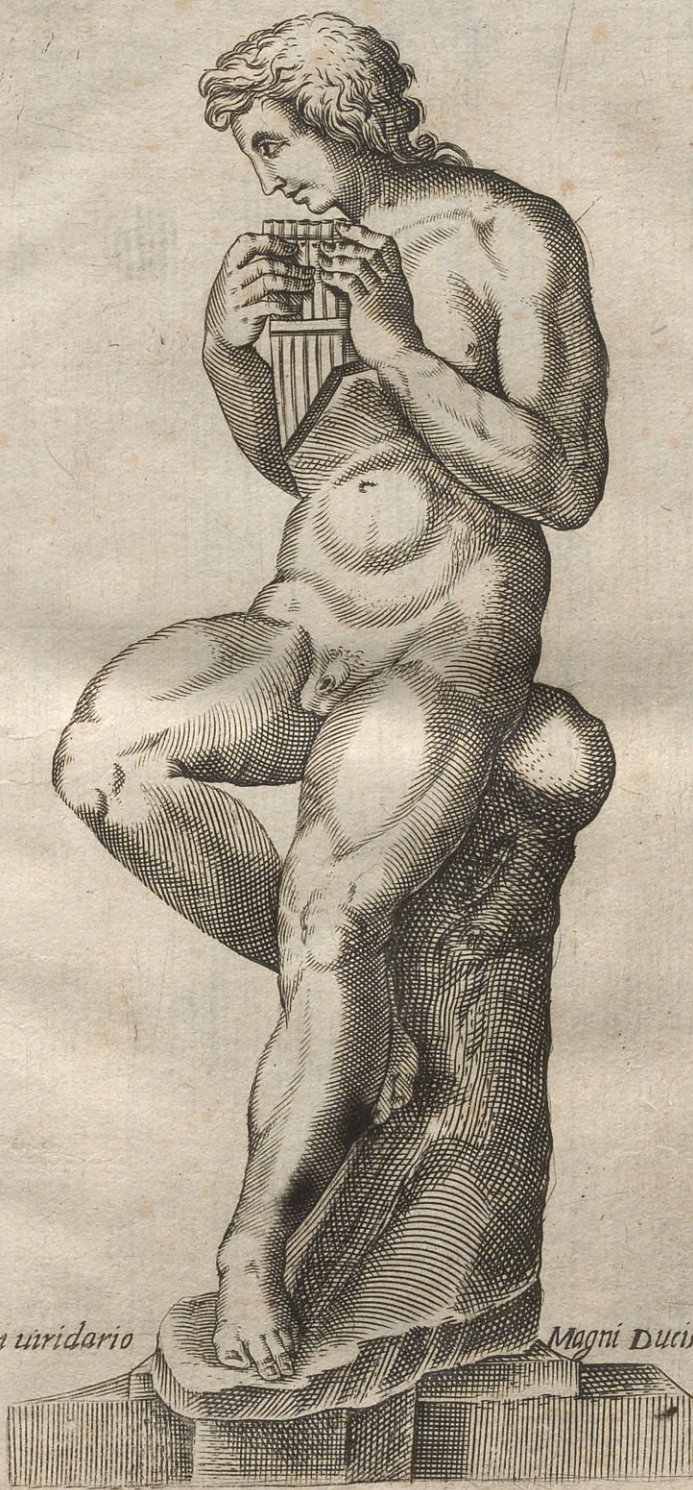
Cleopatra statua marmorea in palatio dicitur Behedere.





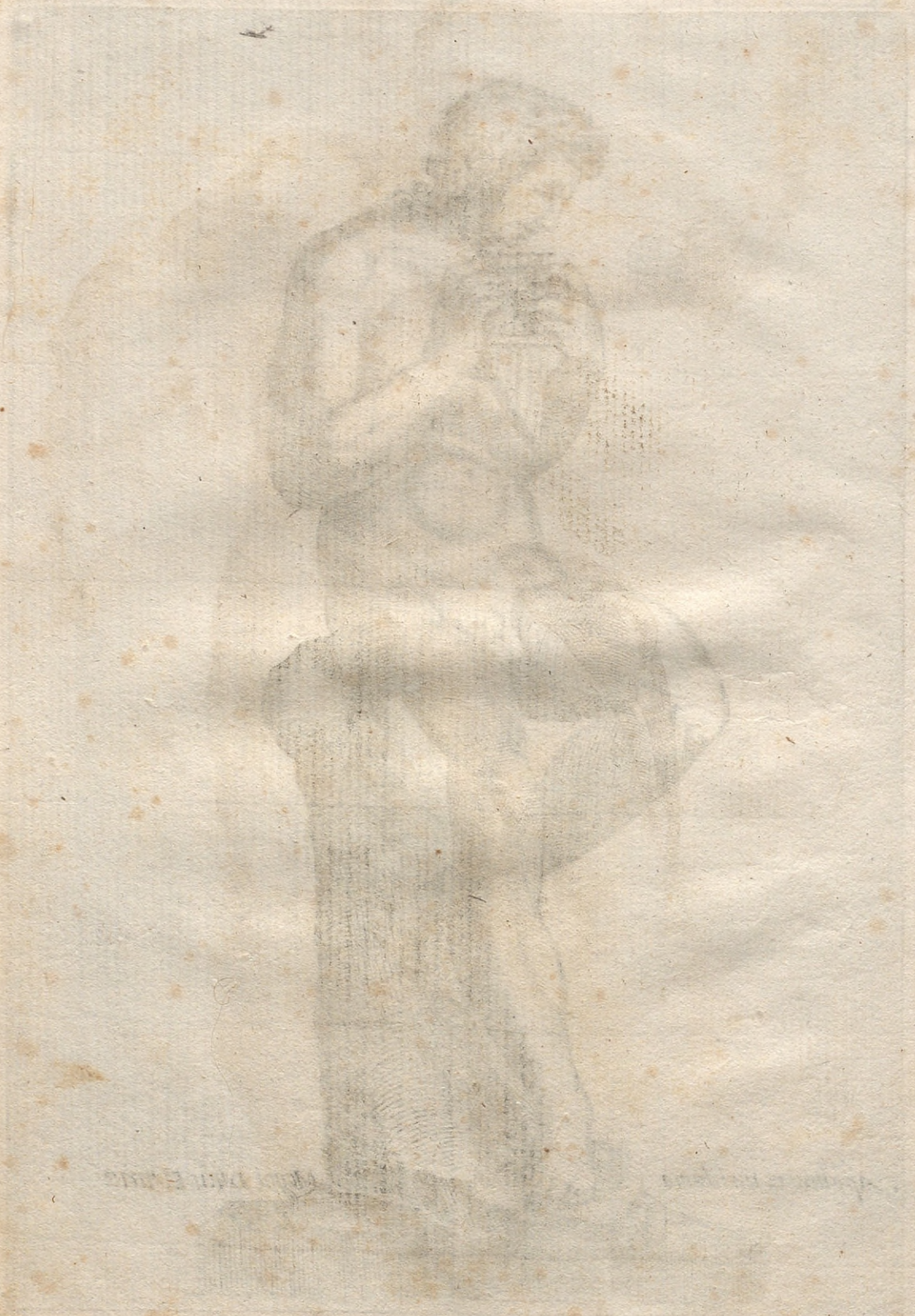
Tyro Hercolis vxor ibidem.





Apolinis in viridario

Magni Ducis Etruriae





Parthorum Rex captivus ibidem ~ Card: Farnesij



Portrait of a woman in classical dress



Rex Armenia captivus ibidem.

Card. Farnesij

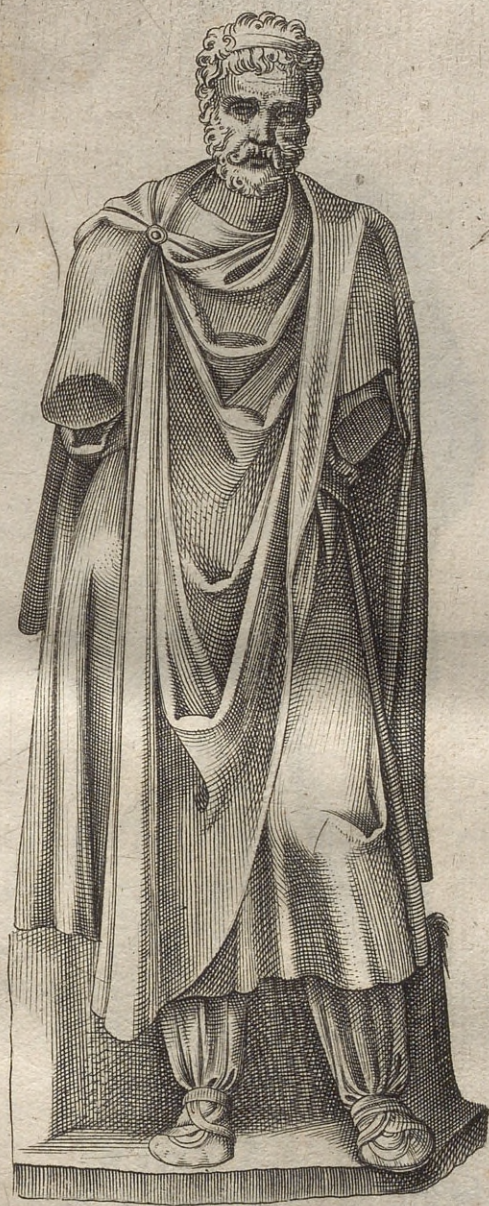


Portrait of a woman in a long dress, possibly a historical figure.



Parthorum Rex captivus e nigro lapide Romæ in ædibus Cæsaris.





Partorum Reges duo captivi e nigro lapide ibidem
in cuius medio est Romæ colossus .
in adibus Cerijs

11



Faint, illegible text or markings at the bottom of the watermark area, possibly bleed-through from the reverse side of the page.



Psiche ibidem.





Agrippina Marci Agrippæ filia ibidem.



Faint, illegible text or a signature, possibly a name, located below the illustration.



Statua incognita ibidem.



Portrait of a woman



In Edibus

Burglesij





In adibus

Burghej





Spei statua marmorea in hortis Car. Ferrarie?





Semele ibidem.





Ceresse Statua marmorea in horti Car. Ferrarie.





Thalia e marmore in hortis Car. Carpen.

XXIX



Portrait of a woman in a long dress
by [illegible]



Amazonis statua marmorea pulcherrima ibidem.





Statua incognita in aedibus Hieronimi de
Cupis prope templum, S. M.^a de anima.





Aesculapius alter ibidem





Asculapius e marmore ibidem.



Faint, illegible text or signature at the bottom of the illustration.



Florae deae signum marmoreum Romae in aedibus Farnesijs.



Faint, illegible text or a signature, possibly bleed-through from the reverse side of the page, located at the bottom center of the sketch area.



Simulacrum deae incertae e marmore sculptū in uilla Iulij III. Pont. Ma. x. Romae.



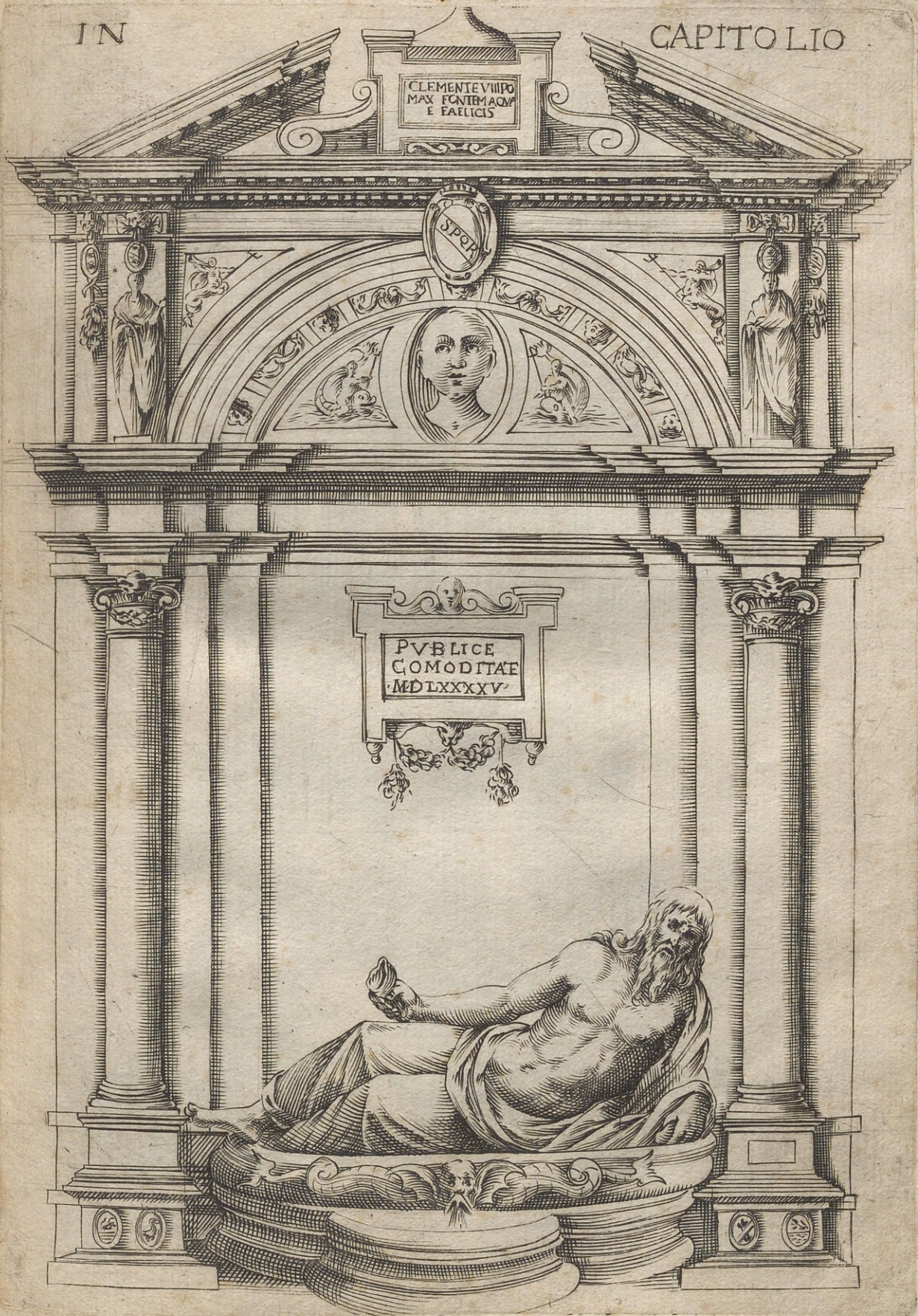
IN

CAPITOLIO

CLEMENTE VIII PO
MAX FORTI MAQV
E FAEICIS

SPQR

PVBLICE
COMODITAE
MDLXXXV







Trophaea Mariana Romae via exquilina, è marmo.

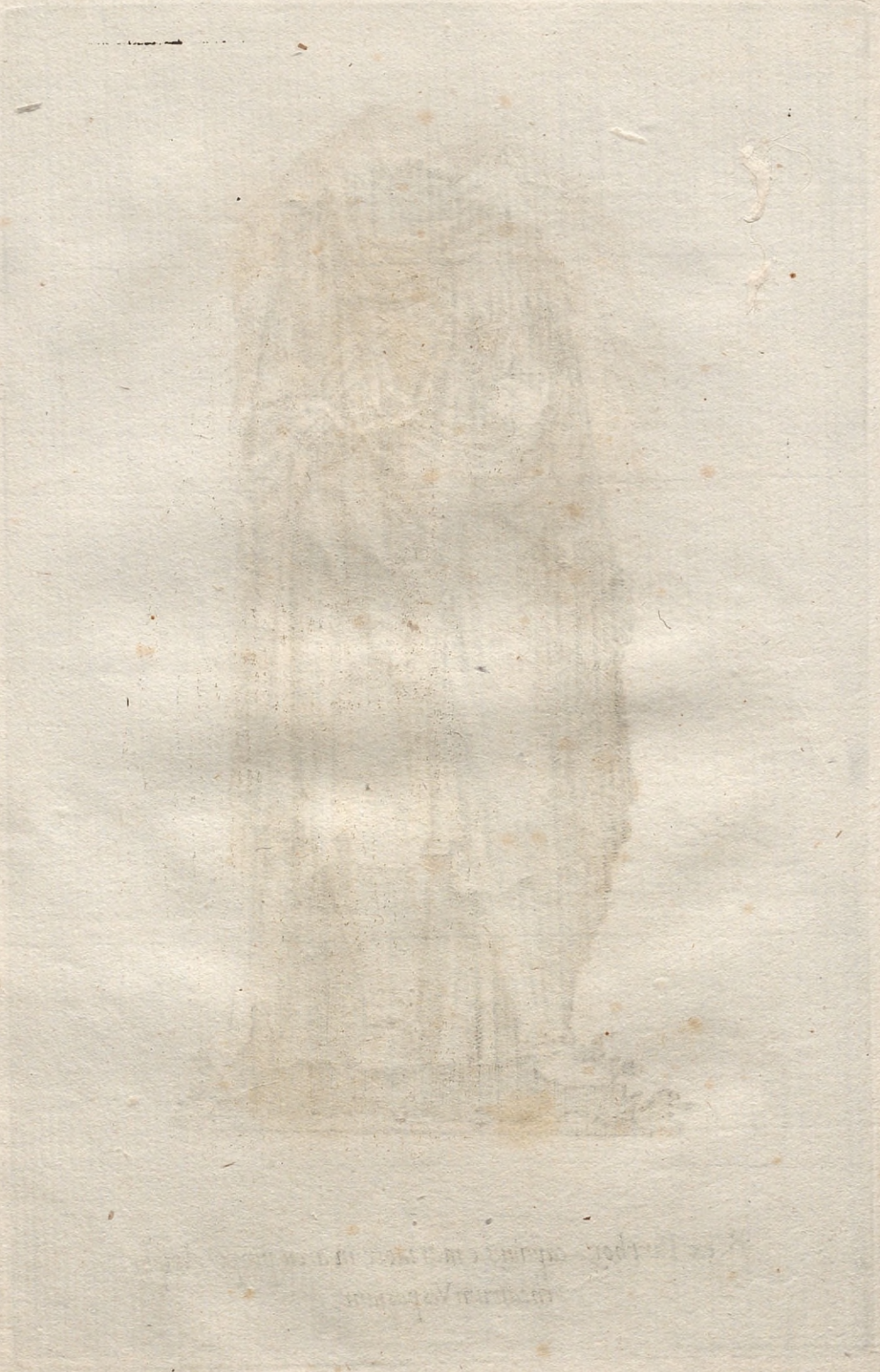




Trophæa Mariana, ut vulgo existimant Romæ via exquilina.



Rex Parthor captivus e marmore in arcu prope Amphitheatrum Vespasiani.





Statua alia incognita e marmore ibidem.





Sabina alia ibidem.



PRINTED AND SOLD BY J. B. ROBERTSON, 10, N. 2ND ST., N. Y.

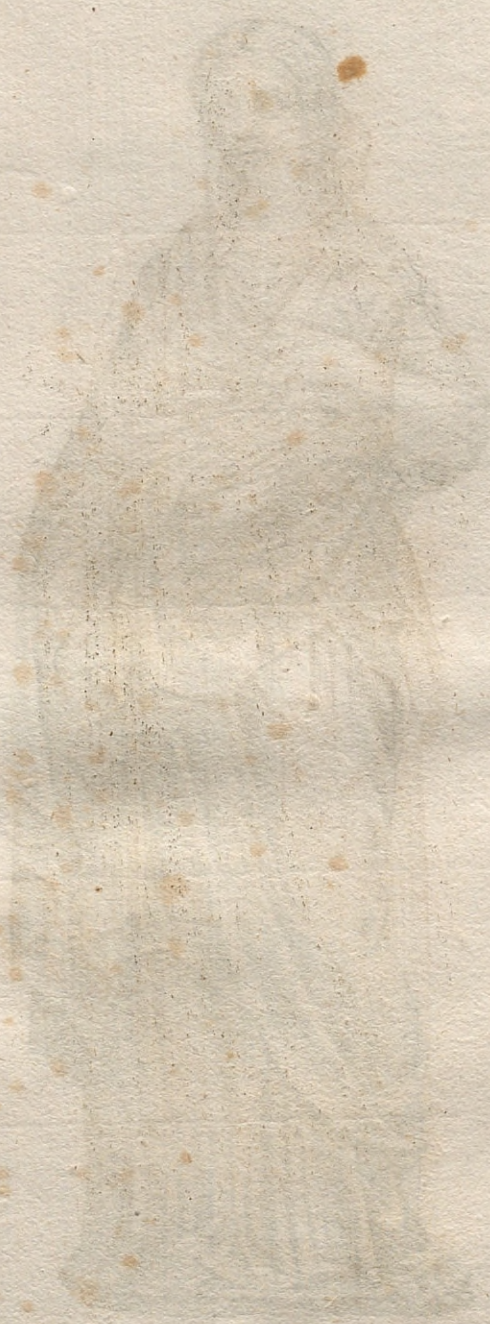


Simulacrum deae incognitae è marmore in uilla Iulij III. Pont. Max. Roma





Sabina alia ibidem.





Sabine statua marmorea in edibus Capranice





VILIA HAGNELIBERTA
VXOR C. PATRONI



VILLA HONORATA
Vxor. C. PATRONI

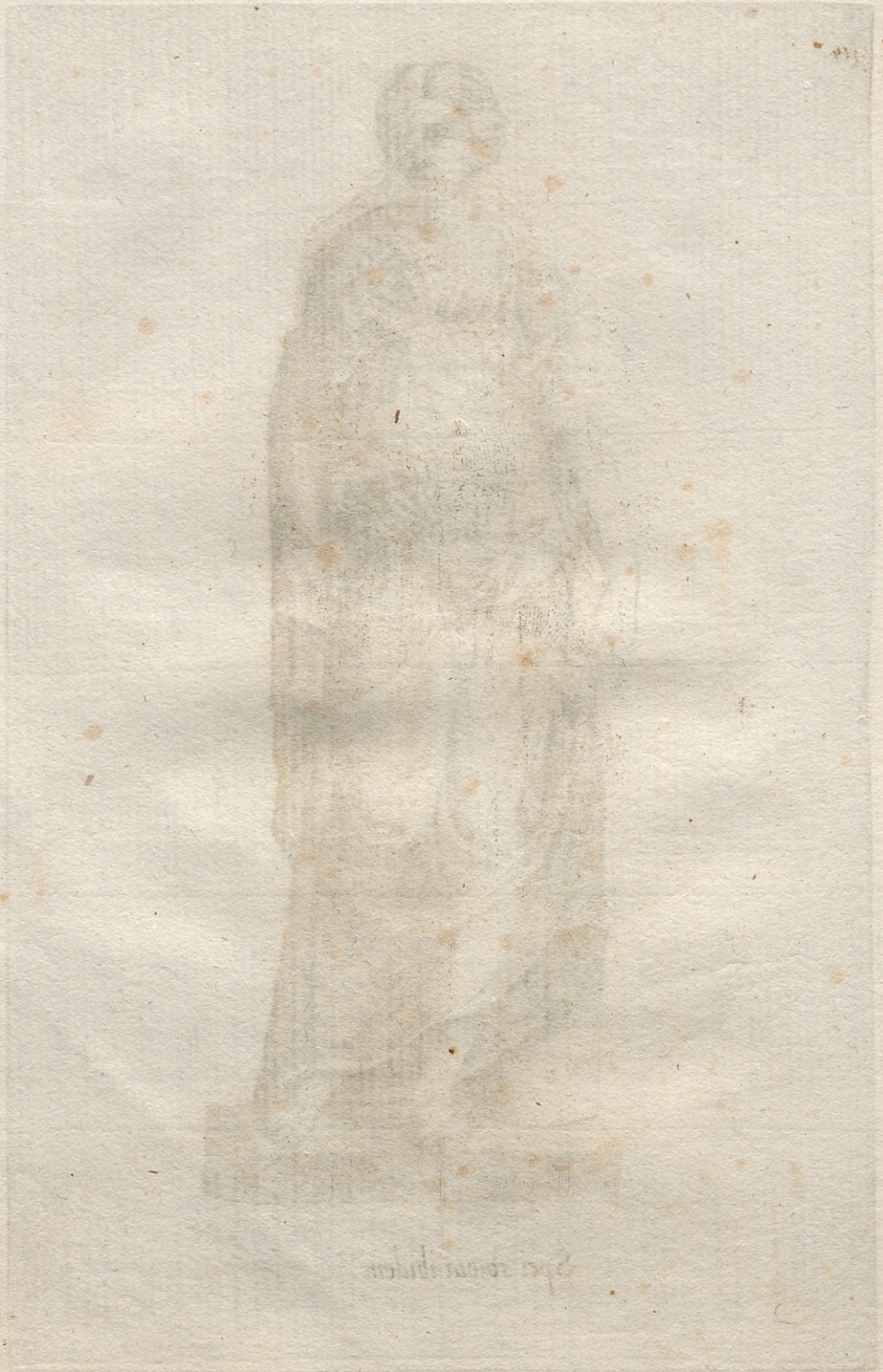


Sabina alia ibidem.





Spes statua ibidem.



Spina...



Anchyroë Statua marmorea in hortis Car: Carpens





Cerere's simulacrum Romae in Capitolio





Simulacrum aeneum in Capitolio Romae.

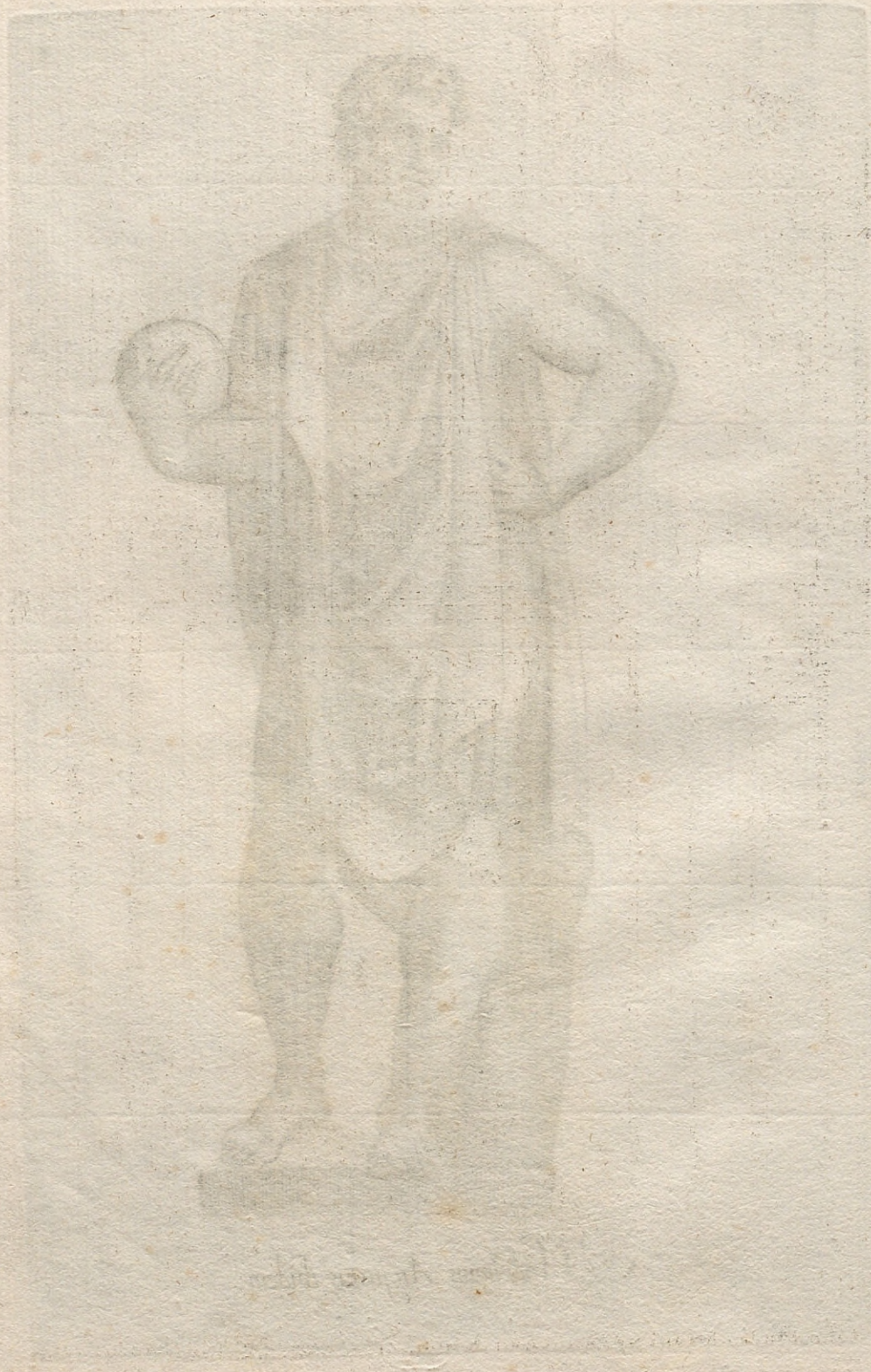




*Alexandri magni miles, uulgo Pasquinus cum saucium detinēs, ante
 sedes Alphonsi Caraffe Car. Neapolitani.*



Hadrianus Augustus ibidem.





Constantinus Imperator ibidem.



Caricature of the Emperor



Augusti simulacrum e marmore Romae in capitolio .-





G. Iulij Caesaris simulacrum e marmore Romæ in capitolio



