

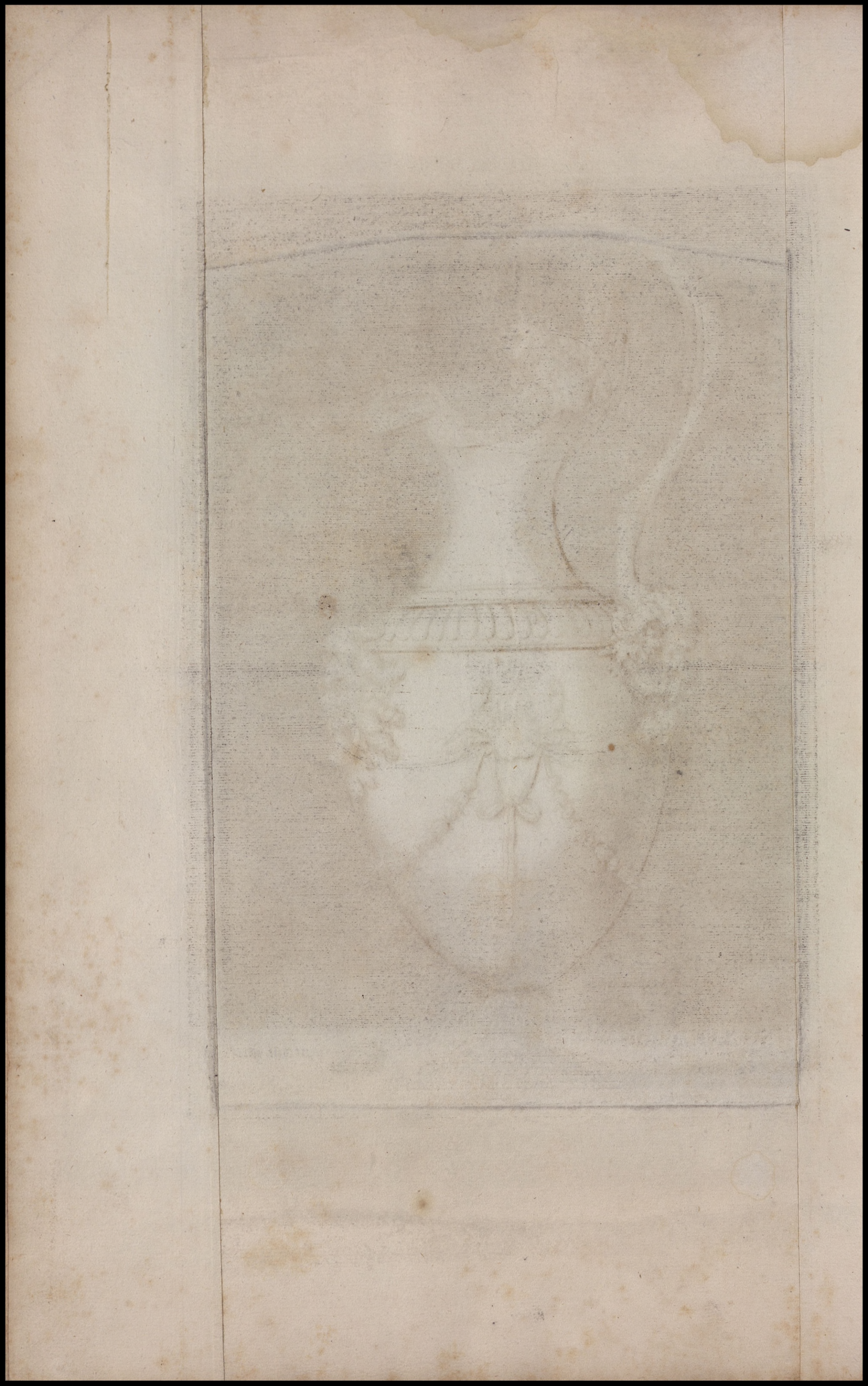


SIC · ROMA · ANTIQVI · SCVLPTORES · EX · ARE · ET ·  
 MARMORE · FACIEBANT ·

1531



Ant. Sal. exc.





SIC ROMA ANTIQVI SCVLPTORES EX  
 ARE ET MARMORE FACIEBANT

1531



Ant. sal. exc.





SIC ROMA ANTIQVI SCVLT ORES EX AERE  
ET MARMORE FACIEBAT

1531



Ant. sal. cxc.





SIC ROMÆ ANTIQVI SCVLPTORES EX ARE  
 ET MARMORE FACIEBANT

1530



Ant. sal. exc.







SIC · ROMA · ANTIQVI · SCVLPTORES · EX ·  
 ARE · ET · MARMORE · FACIEBANT

- 1530 -

Ant. sal. rxi.





SIC ROMA ANTIQVI SCVLPTORES EX ARE  
 ET MARMORE FACIEBANT

1530  
 A.V.

Ant. Sal. exc.



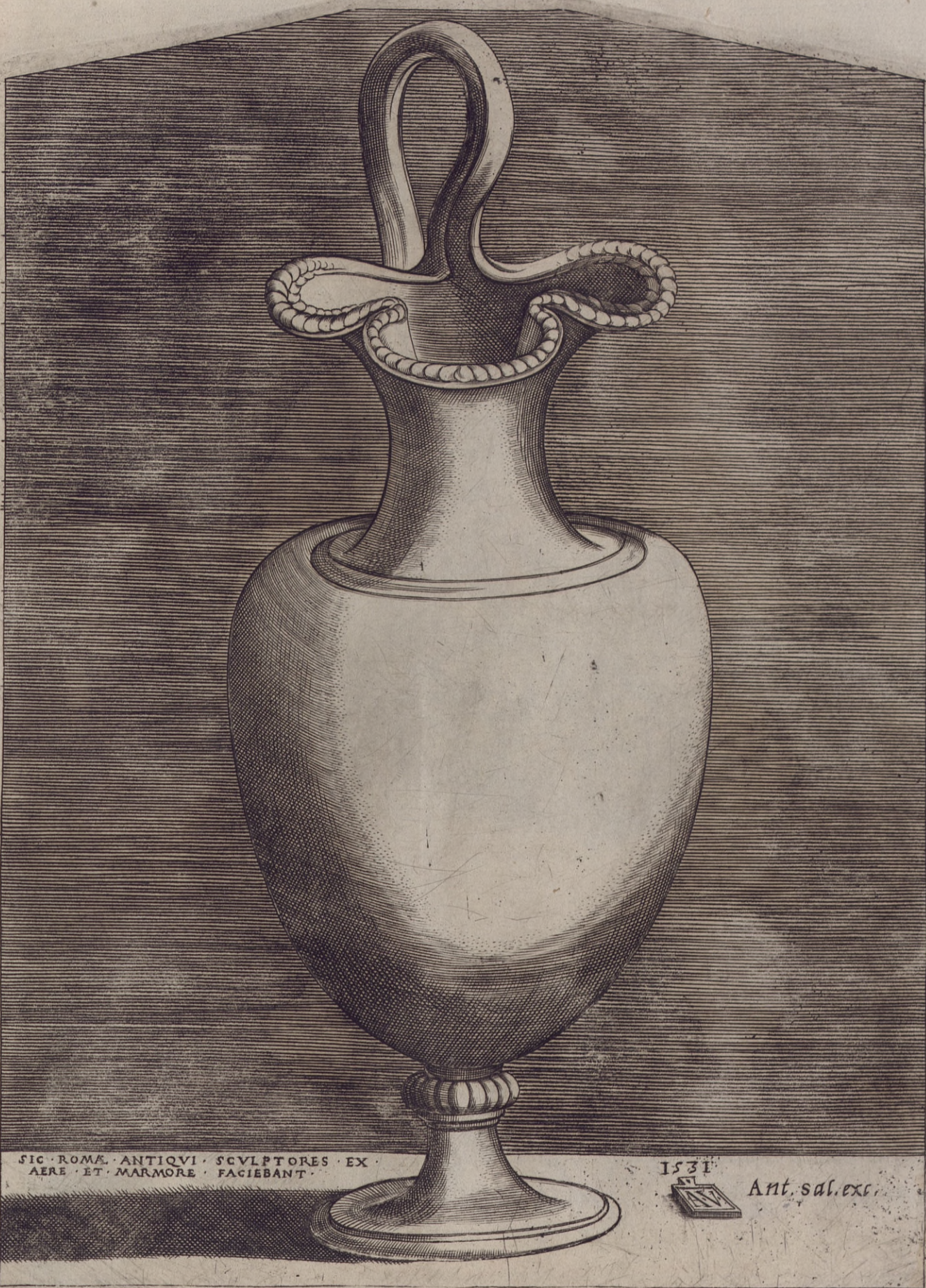


SIC ROMA ANTIQVI SCVLPTORES, EX ARE ET MARMORE FACIEBAT

1531

Ant. Saf. exc.





SIC ROMA ANTIQVI SCVLPTORES EX  
 AERE ET MARMORE FACIEBANT

1531



Ant. sal. exc.







SIC ROMÆ ANTIQVI SCVLPTORES EX ARE  
ET MARMORE FACIEBÂT

1531



Ant. Sal. exc.





SIC ROMA ANTIQVI SCVLPTORES EX ARE  
 ET MARMORE FACIEBANT

1530

Ant. sal. exc.

